



Salon Furniture & Equipment

**Takara Compagnie Paris**

56 rue des hautes pâtures, 92000 NANTERRE, France

Tel: +33-1-42-42-66-28

www.takaracoiffure.fr

Takara Company Europe GmbH

Industriestraße 21, 61381 Friedrichsdorf

Tel: +49-6172-1772-850

<https://beauty.takarabelmont.de/>

Takara Belmont Italy SRL

via Marino Mazzacurati 4/1 42019 Scandiano (Reggio Emilia) Italy

Tel: +39-0522-086548

www.takarabelmont.it



WHO WE ARE

For more than a Century Takara Belmont has been a world-leading manufacturer of equipment, technology and professional hair cosmetics for the hair, beauty, dental and medical industries. Today, our innovative products and technologies are continuing to transform the working experiences of skilled professionals, while achieving their clients' desire to be beautiful and healthy.

The COVID-19 pandemic has reminded us of just how wonderful and precious inter-personal services are; how vital they are to the hair, beauty and healthcare industries, and to the health and well-being of the clients we all serve.

Takara Belmont's mission is to fully support and advance the expertise of our clients by delivering innovative, safe and dependable products that reimagine service experiences, while creating highly functional and inspiring salon environments, and clinical settings.

While celebrating our 100th Anniversary in 2021, we took the opportunity to renew our corporate purpose as: "Rise into beauty, Walk into life."

As part of this, we also incorporated a new Group Vision: "To be a global enterprise that achieves the well-being of both people and society through innovation." Where we pursue our enduring contribution to the further development of the industries we serve, we are focused on two key challenges: "Performing sustainable manufacturing" and "Creating products, services, and new values that realise a prosperous future that promotes positive mental and physical well-being for people around the world."

Our enduring commitment is to continuously rise to the challenge of delivering high-value products and creative solutions for the people all over the world who are always seeking to discover the beauty of life.



Purpose

Rise into beauty, Walk into life.

Living a beautiful life is
to live your own journey.

This belief drives Takara Belmont
to continuously evolve our knowledge
and technology and, with our beauty
and health experts, rise to the peak.

We work resolutely
so that everyone is able to
polish the gem that is their individuality.
Allowing each person to shine
in their own right,
embrace their own wellness,
and face now and the next day holistically.

Through all life's moments
we hope that each and every person live
their life with grace
and that society can celebrate
everyone's beautiful life.

CONTENTS

BARBER CHAIRS	7
MOTORISED CHAIRS	16
SHAMPOO CHAIRS	26
STYLING CHAIRS	31
CHAIR BASES	41
BACKWASH UNITS	44
SIDEWASH & CABINETS	64
PROCESSORS	68
BEAUTY & SPA	77
ACCESSORIES	81

WHY TAKARA BELMONT

Reliable Company

Founded in 1921 in Osaka Japan, Takara Belmont is a global company that, from the outset, has expanded its business across Japan and around the world. Today, we are a group of companies present in 13 countries and regions with our products sold and used in over 120 countries.

As a diverse business focused on innovation and enterprise, we have established ourselves as one of the world's leading manufacturers of products, equipment and technologies, and professional cosmetics, for hair & beauty salons, and dental & medical businesses. Additionally Takara Belmont also owns the Space Design Company, the Beauty College and the Aesthetics College in Japan, making it a multifaceted, multi-dimensional global business.



Learn more



*Scan here for the Japanese, Chinese, Korean versions.



Reliable Values

As a company that's dedicated to helping people realise their beauty and health potential, contributing to the industry and wider society is an important part of our culture, and our mission.

Our commitment to enhancing professional development is reflected in the running of beauty schools, organising hair & beauty exhibitions, and hosting technical competitions. Furthermore, as the epicentre of excellence, our professional centre and showroom, TB-SQUARE, reinforces our global reputation and status as a world-class organisation. Another example of this commitment is our sponsorship and support of hair & beauty organisations with plan to participate in the international expo "EXPO 2025".

The support of professionals, along with our contribution to the development of the hair & beauty and healthcare industries, and local communities through sustainable activities and practices, are responsibilities we take seriously for the future prosperity and well-being of all.



Reliable Products

As one of the world's leading manufacturers of high quality products, we offer:

■ Highly specialised products

We have thoroughly researched the functions and elements required to create innovative products for hair & beauty salons. The knowledge, insight and know-how we have acquired over more than a Century is incorporated into the design, functionality and precision of every product. This approach enables professionals to deliver their expertise and services safely, securely and comfortably while elevating every service experience and outcome, and ensuring the highest levels of client satisfaction.



■ Innovative & iconic product development

We proudly have so many innovative & iconic products which are beloved and known all over the world, such as the ROLLER BALL series, the 225 barber chair (Apollo/Elegance), the MICRO MIST processor and our prestige YUME series backwash units.



■ Accomplished craftsmanship and proud professionalism

In the spirit of exceptional craftsmanship and the expertise of our exemplary craftspeople, our promise is to offer the finest quality, accuracy and precision with no variation from product to product. The application of selected technologies and delicacy through an impeccable human touch works in perfect harmony with efficient production systems and our eco-friendly factories. The introduction of new machinery and facilities, and a cell production system to enable high-mix low-volume production, eliminates excess, inconsistency, and waste.



Learn more



Video



■ Unshakable quality

We have acquired ISO 9001, a globally recognised standard for quality management, since 1997 and all our products comply strictly with the laws and regulations in each destination country. In addition to this accreditation, our own strict quality control system covers all stages of the production process from product development to pre-shipment inspection, which includes 100,000 endurance tests.



TAKARA BELMONT'S SUSTAINABILITY POLICY

Creating a society where the World can shine.

Our mission is to embrace uniqueness and unlock potential.

To protect the Earth by using its resources wisely and empowering individuals by nurturing our communities.

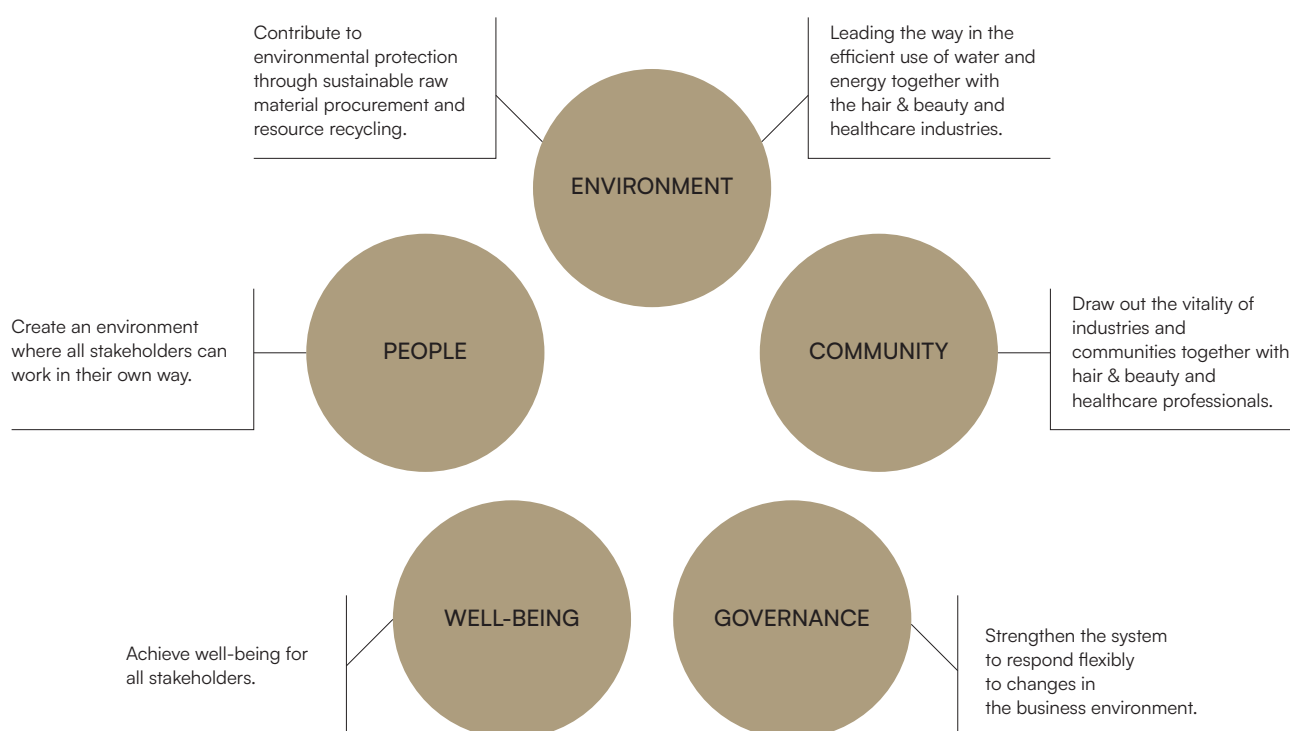
Collaborating with beauty and health professionals to champion well-being for all.

To continue to challenge conventions for the creation of a brighter and more harmonious future.



5 Areas and 6 Materiality (Important Issue)

In order to fulfil our responsibilities as a “manufacturing company”, Takara Belmont Group aims for a sustainable society. We have set five areas and six materialities (priority issues). We will contribute to the achievement of the SDGs (Sustainability Development Goals) while addressing social issues for people around the world who wish to achieve a beautiful life.



Upcycling Waste Leather Activities “Re:bonis”

“Re:bonis” is an activity from our own factory to create new value by upcycling waste leather* generated in the process of manufacturing professional chairs. It is an initiative for a recycling-oriented society that considers the future global environment. So far, we have been engaged in activities to convey the appeal of manufacturing, such as the production of novelties (name holders and event novelties for our group employees, etc.), co-creation activities with educational sites and local communities.



*In our company, we refer to synthetic leather.



BARBER CHAIRS

Takara Belmont's highest-grade barber's chairs
have been a long-standing favorite.
Can be tailored from a wide line-up with varied features and
designs according to salon service and design.

Takara Belmont



1. MODEL NO. 225
[Bond's Barbershops]

2. 225 ICON
[Barbieria Santa Marta]





3. ELITE BLACK
[Salt Lake Proper Barber]

4. LEGACY 90
[BARBER ellen]



5

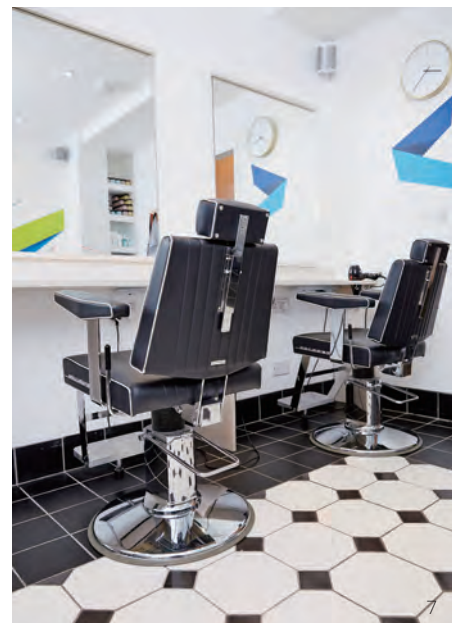


6

5. LEGACY 95
[The Serious Barbering Co]

6. DAINTY
[Buffalo Co. Salon & Barber]

7. DAINTY
[Cut-Throat]



MODEL NO. 225 (APOLLO 2/ELEGANCE)

The genuine article and the world's most iconic barber chair. The 225 barber chair is timeless, robust and perfect for barbering, male grooming and shaving services.

ORIGINAL SPECS

Since introduced to the market in 1961, the 225 has become a staple in barbershops and salons worldwide with ever-growing popularity over the years.

with CLASSIC E [SILVER]
W640×D940-1480×H1085-1290mm
SEAT: BLACK [NL5]
PIPING: BLACK [NL5]
UP&DOWN: MOTORIZED
(when using with CLASSIC E base)
BACKREST (reclining): MANUAL
LEG REST (raising): SYNCHRONISED



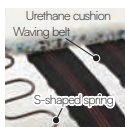
CLASSIC SPECS (WITH HEEL REST)

A classic heel rest can be fitted on the 225, so even the tallest of clients will have plenty of room to stretch their legs. Our pursuit of the highest levels of comfort preserves barbering tradition through evolution.

with SLIM-R [CHROME]
W640×D1140-1515×H1080-1255mm
SEAT: BLACK [NL5]
PIPING: BLACK [NL5]
UP&DOWN: MANUAL
(when using with SLIM-R hydraulic base)
BACKREST: MANUAL
LEG REST: SYNCHRONISED



Comfortable reclining angles
(reclining: 30° to upright: 75°)



The ergonomic features provide both comfort and stability



Upholstered padded armrests and integrated gown rail



Belmont-branded footrest with stopper



Height-adjustable and removable headrest (8 settings)

SEAT

- BLACK [NL5]
- RED [NL6]
- DARK BROWN [NL24]
- LIGHT GREY [NL3] (WHITE [NL1] piping)
- RED [NL6] (WHITE [NL1] piping)
- DARK BROWN [NL24] (IVORY [NL2] piping)

*Upholstery and piping colour options available. Prices may vary.



ELITE BLACK

As the first evolution of the 225 barber chair, refined black iron works and white contrasting piping adds to the 225's iconic style while extending its appeal to traditional barbers, male grooming salons and other hair care settings.

with SLIM-R [BLACK]
W640×D940-1480×
H1080-1255mm
SEAT: BLACK [NL5]
PIPING: WHITE [NL1]



ELITE WHITE

As the first evolution of the 225 barber chair, refined white iron works and black contrasting piping adds to the 225's iconic style while extending its appeal to traditional barbers, male grooming salons and other hair care settings.

with SLIM-R [WHITE]
W640×D940-1480×
H1080-1255mm
SEAT: WHITE [NL1]
PIPING: BLACK [NL5]



ICON

The 225 Icon radiates luxury with quilted diamond stitching that advances the 225 series to new echelons of refinement and comfort.

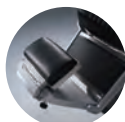
with SLIM-R [CHROME]
W640×D940-1480×H1080-1255mm
SEAT: DARK BROWN [SH24]
PIPING: IVORY [NL2]

Note: Due to the nature of the thread used in the diamond-shaped stitching of this product, thread breakage and fraying are likely to occur depending on the conditions of use. Please note that these are not covered by the warranty.

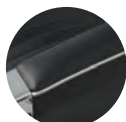


Photo enlarged to show stitching

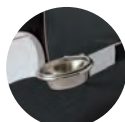
UPGRADE OPTIONS (common to 225 series)



HEEL REST
(Classic specs)



CONTRASTING
PIPING



MANICURE BOWL
AND RING
AB-EX90MB/H



INTEGRATED
ASHTRAY IN ARM END



STITCHED SEAT AND
BACKREST UPHOLSTERY

(Original / Classic / Elite)

SEAT (ICON model only)

- DARK BROWN [SH24]
(IVORY [NL2] piping)
- BLACK [NL5]
(WHITE [NL1] piping)

*Upholstery and piping colour options available.
Prices may vary.

CHAIR BASE Select from the following: CLASSIC E (See page 41-43 for details.) SLIM-R (Chrome, Black or White)


[Learn more](#)

LEGACY

Tradition, redefined with the reassuring solidity of a cast iron frame and the familiar touch of soft leather. Each nostalgic detail has been passed down over more than a Century and brought to life by our dedicated artisans.

LEGACY 95

Robustness, reliability and comfort are maintained in this 95th Anniversary model with the addition of a new leg rest design that adds a new aesthetic dimension to this classic chair.

with AN-008HS
W713xD1228-1534x
H1070-1245mm
SEAT: RED [NL6]
CHAIR FRAME: WHITE



Photo enlarged to show leg rest

LEGACY 100

To mark the important milestone of our Centenary, the LEGACY 100 has emerged as a new modern classic. Born of tradition, yet modified to bring a new and contemporary style to barbering.

PREMIUM VINTAGE
DARK GREY
AB-0100PDSNL5/
AN-BCED
W727xD1228-1534x
H1084-1289mm
SEAT: BLACK [NL5]
CHAIR FRAME:
DARK GREY



PREMIUM
VINTAGE RED
AB-0100PRSNL5/
AN-008HGS
W727xD1228-1534x
H1080-1255mm
SEAT: BLACK [NL5]
CHAIR FRAME: RED



With KOKEN logo for North American market

OPTIONS



HEADREST HOLDER



DRYER HOLDER
AB-EX90DH
(upgrade option in some countries)

UPGRADE OPTIONS



MANICURE BOWL / HOLDER
AB-EX90MB/H



ADDITIONAL RECLINING LEVER (left)
AB-EX90GL



CAPE HOLDER
AB-EX90NS



UPHOLSTERED HEADREST COVER
AB-EX90HC 99



TOWEL HANGER
AB-EX90CH



METALLIC SILVER CHAIR FRAME

SEAT BLACK [NL5] RED [NL6] DARK BROWN [NL24]

*Upholstery colour options available. Prices may vary.

CHAIR BASE Select from the following: CLASSIC E (See page 54-56 for details.) AN-008H

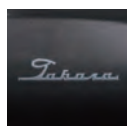
(LEGACY 95/100 only)



Lost-wax casting leg frame

The frame features a grating between the upholstered pads for an open feeling. Reproduced with lost-wax casting, this feature detail replicates a bygone era when cast parts were finished by hand polishing one by one.

(LEGACY 100 only)



Classic Takara logo

This original logo was engraved on classic popular models and has been respectfully reproduced on the LEGACY 100 to create an atmosphere of tradition and genuine barbering heritage.

(Common to LEGACY series)

UP&DOWN: MOTORISED (when using with CLASSIC E base) OR MANUAL (when using with AN-008 base)
BACKREST (reclining): MANUAL
LEG REST (raising): SYNCHRONISED

DAINTY (MODEL NO. 405)

A modern classic inspired by decades of barbering tradition and timeless style. The DAINTY grooming chair retains its enduring appeal and global popularity to remain an international best-seller.

DAINTY (MODEL NO. 405)

with SLIM-85CC [CHROME]

W630×D900-1215×H982-1182mm

SEAT: WHITE [NL1]

PIPING: CHARCOAL GREY [NL4]








UP&DOWN: MANUAL

BACKREST (reclining): MANUAL

LEG REST: FIXED



SEAT

- | | | | |
|--|---|---|--|
|  LIGHT GREY [NL3] |  CHARCOAL GREY [NL4] |  BLACK [NL5] |  MOCHA BROWN [NL25] |
|  LIGHT GREY [NL3]
(WHITE [NL1] piping) |  CHARCOAL GREY [NL4]
(WHITE [NL1] piping) |  WHITE [NL1]
(CHARCOAL GREY [NL4] piping) | |

*Upholstery and piping colour options available. Prices may vary.

CHAIR BASE (See page 41-43 for details.)
Select from the following:

-  **SLIM-85** (black [BB] or chrome [CC])

GT SPORTSMAN (MODEL NO. 141)

Inspired by a classic racing car seat, the GT SPORTSMAN is masculine, inviting and extremely stylish. As one of our most popular grooming chairs, GT SPORTSMAN stands the test of time owing to its stylish good looks and supreme functionality.

GT SPORTSMAN (MODEL NO. 141)

with SLIM-85BB [BLACK]

W650×D980-1350×H1055-1255mm

SEAT: BLACK [NL5]

PIPING: BLACK [NL5]

UP&DOWN: MANUAL

BACKREST: MANUAL

LEG REST: FIXED



SEAT



BLACK [NL5]



DARK BROWN [NL24]
(IVORY [NL2] piping)

CHAIR BASE Select from the following:



CLASSIC E (See page 54-56 for details.)



SLIM-85 (black [BB] or chrome [CC])

*Upholstery and piping colour options available.
Prices may vary.



MOTORISED CHAIRS

Fully motorised, high performance chairs with one-touch presets and auto-return functions that enhance working efficiency for hairdressers and increase comfort for clients.



1. BRAMU
[DAITOKYO&CITY]



- 2. LUAR
[ZETCH]
- 3. MAXIM
[white garden]



4. LEGEND
[Shaving District - Miami]

5. INOVA-EX
[PLAZA]



6. LUAR
[embellir]

7. LEGEND
[RAMITTA]

MAXIM

Our fully programmable flagship motorised chair symbolises the pinnacle of our evolution as an innovator and as a purveyor of accomplished luxury. The MAXIM delivers fully personalised service experiences delivered via precision electronics for matchless comfort and relaxation.

PRESTIGE MODEL

ROLL-OUT LEG REST WITH HEATER &
HIGH GRADE FOOTREST
AB-950OPSH24
W710×D1050-1485×H930 (STROKE 290) mm
SEAT: DARK BROWN [SH24]
FOOTREST: FIXED



BACK SIDE

ESTHETIC MODEL

FULL-FLAT LEG REST & FOOTREST WITH HEATER
AB-9500ESH1
W710×D1080-1665×H930 (STROKE 290) mm
SEAT: BLACK [SH1]
FOOTREST: FIXED



Height-adjustable seat



Lift-up height-adjustable headrest



Gold headrest adjuster



Woody & gold armrest

OPTION



SERVICE TABLE
EX-95T

SEAT

- BLACK [SH1]
- DARK BLUE [SH9]
- DARK BROWN [SH24]
- COOL BLACK [KA06] (genuine leather)

BRAMU

Combining superior comfort and elegance, the BRAMU realises premium seating comfort in a “DANDY SQUARE” furniture style form. Thick gathered cushions wrap around the body securely to provide supreme comfort even during long service experiences.

OSP, ADJUSTABLE LEG REST MODEL

AB-BROSB-VT2
W760×D1088-1302×H907 (STROKE 280) mm
SEAT: DARK BROWN [VT2]
FOOTREST: DETACHABLE



Full lie-flat style offers comfort for a wide range of salon services. Synchronised movement of the backrest and leg rest brings this chair to an almost full lie-flat position!! BRAMU syncs well with the YUME QASIS mobile wash unit while the YUME SWING position setting function² achieves the ideal shampoo position when paired with this backwash unit.

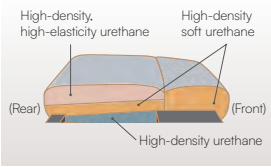
¹Backrest surface angle: 172° ²OSP model



Double cushion structure and gathered upholstery



Wide seating space and gathered seat cushion



The three-layer urethane seat cushion offers premium seating comfort. The seat cushion consists of three urethane layers of differing softness. This prevents sinking of the cushion and maintains soft seating comfort for long seated periods.

Selectable original vintage style



MODERN VINTAGE* AB-BR □ □ □-VT □ □** AUTHENTIC VINTAGE* AB-BR □ □ □-VT □ □**
*Available only with VT upholstery. Bottom part of two-tone colour is available only in black [VT].
**□ will be replaced with variation and upholstery colour.

OPTIONS



SERVICE TABLE EX-95T



FOOTREST PAD EX-MVP

*Available only for the full-flat leg rest model
*For the chair in SH upholstery, ES upholstery is used for the footrest pad.

SEAT

- BLACK [VT1]
- DARK BROWN [VT2]
- RED BROWN [VT3]
- CAMEL [VT4]
- BLACK [SH1]
- DARK BROWN [SH24]

SPECIFICATIONS

MODEL	MODEL NO.	LEG REST
OSP (FRONT/REAR)	AB-BROSF	FULL-FLAT

*All models are equipped with cape holder, holder for hand dryer, leg rest heater, lift-up height-adjustable headrest, and detachable footrest.
*OSP model is equipped with shockless movement for up/down and backrest reclining, foot cushion (full-flat model only), YUME SWING position setting function, and service table.



A representation of world-class luxury in every sense with electronic innovation at its core and unimaginable comfort at its heart, the LEGEND motorised chair is fully functional and programmable for highly personalised grooming services.

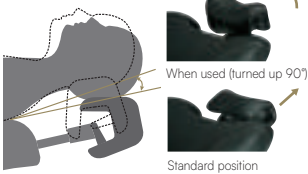
PRIME MODEL

AB-LGP0-ES8
W700×D1020-1280×H910 (STROKE 280) mm
SEAT: BLACK [ES8]
FOOTREST: DETACHABLE



Full-flat leg rest

The footrest rises together with the leg rest to an almost horizontal position so as to enhance client comfort. This feature supports the expansion of new salon services, such as full lie-flat shampoo, head spa, and facial care.



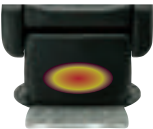
Lift-up height-adjustable headrest (Luxe model, Prime model, and Full-flat model only)

The height of the headrest can be changed through a 90° rotation lift-up mechanism, and the gently curving shape comfortably support the client's head and neck.



Foot cushion (Full-flat model only)

The separate foot cushion comfortably supports the client's lying posture.



Leg rest heater

The leg rest is equipped with a heater, which gently warms the legs to ensure an even more relaxing time during shaving or facial care.

*Prime model and Full-flat model only

Shock-absorption mechanism

The standard shock-absorption feature enables the client to be lowered smoothly to a comfortable full lie-flat posture.

*Prime model and Full-flat model only

*The shockless mechanism is equipped with up/down and backrest movement.

SPECIFICATIONS

MODEL	MODEL NO.	HEADREST	LEG REST	HEATER
FULL-FLAT	AB-LGFO	LIFT-UP	FULL-FLAT	WITH

*Footrest is detachable. Raise the leg rest when removing the footrest.

OPTION



SERVICE TABLE EX-95T

SEAT

- BLACK [ES8]
- BROWN [ES12]
- RED [ES13]
- CAMEL [ES14]

MOTORISED CHAIR LEG REST SPECIFICATIONS

Common features of products shown in page 21-24.



Adjustable leg rest



Full-flat leg rest



Roll-out leg rest



Adjustable leg rest (synchronized with backrest)



The INOVA-EX motorised chair commands attention for style, comfort and function in equal measure. Its technology driven programmable functions are the essence of high-class style and performance to upscale every barbering, male grooming and shaving service.

IVFW MODEL

AB-IVFT-BK
W615×D1090-1330×H920 (STROKE 280) mm
SEAT: BLACK BK [ES8]
FOOTREST: DETACHABLE (AB-IVFW ONLY)



MOTORISED CHAIRS



Quality seating comfort
The chair uses soft, stretchy ES upholstery that snugly fits and embraces the client's physique for seating comfort. The gathering design creates an impression of high quality.
*Backrest gatherings may vary from product to product.



Individual movement
Individually adjustable leg rest and backrest for work efficiency in limited space and variety of service.
(AB-IVFT/IVFW only)



Removable backrest
User-friendly backrest for long hair and child haircuts. Equipped with holder for the backrest.
(AB-IVFW only)

Footrest cover
(AB-IVFW only)

OPTIONS



HEADREST COVER WITH EXTRA CUSHION
EX-IVFMC



ARMREST COVERS
(2 pcs. as set)
EX-IVFTC



BACKREST COVER
(for fixed backrest)
EX-IVFSC



BACKREST COVER
(for removable backrest, upper & lower)
EX-IVFSBC

SPECIFICATIONS

MODEL	MODEL NO.	BACKREST	LEG REST	FOOTREST
REMOVABLE BACKREST AND ADJUSTABLE LEG REST	AB-IVFW	REMOVABLE	ADJUSTABLE	DETACHABLE

SEAT ● BLACK BK [ES8] ● BROWN DB [ES12] ● WHITE WH [ES1] ● RED RD [ES13] ● CAMEL CM [ES14]

LUAR

The LUAR supports the salon by offering a wide variety of services. The chair is compactly equipped with a full lie-flat reclining mechanism and other useful functions, all enhancing the quality and value of salon services.

BTY STANDARD MODEL

AB-MFSST-IV/EX-MFDJ
W645xD1000-1480*×H870
(STROKE 280) mm
*D1080-1560 in case of aluminium footrest
SEAT: IVORY IV [ES9]
FOOTREST: DETACHABLE

MULTIPURPOSE
CHAIR



Lift-up height-adjustable headrest



When folded
(standard position)



When raised

Foot cushion (single size)



*OSP model only.

Footrest (detachable)



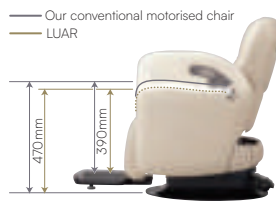
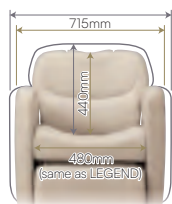
ALUMINIUM TYPE



PLASTIC TYPE

EX-MFDA (Aluminium type)
EX-MFDJ (Plastic type)
For BBR Standard model
with standard lift-up leg rest:
EX-MFDBA (Aluminium type)
EX-MFDBJ (Plastic type)

*Footrest sold separately. Selectable from
a compact flat plastic or a stable aluminium type.



Compact design with a low initial seat height and generous width.
The inner width of the seat is same or just around a few centimeter narrower than our conventional motorised chairs to comfortably accommodate all body types.



Full lie-flat reclining

The backrest reclining angle of a maximum 175° helps to distribute body pressure during shampooing and relieves stress on the neck.

*Difference of reclining angle between the LUAR and our conventional motorised chairs: approx. 10°

OPTIONS



DETACHABLE
SWIVEL TABLE¹
EX-MFT



FOOTREST PAD²
EX-MFP-□□³



LUAR BACKREST
EXTENSIONAL
CUSHION
EX-MFSC-□□³



LUAR FOOT
CUSHION W
(wide size)
EX-MFFCW-□□³

¹Available only for OSP models. 1 pc. is coming with OSP model chair as an accessory.

²Available only for full-flat leg rest model with plastic footrest

³□□ will be replaced with upholstery colour. Colour can be selected to match the chair upholstery.

SPECIFICATIONS

	MODEL	MODEL NO.	LEG REST
BTY	STANDARD	AB-MFSST	FULL-FLAT
	OSP (FRONT/REAR)	AB-MFSOS	
BBR	STANDARD	AB-MFBSB	FULL-FLAT
		AB-MFBS	ADJUSTABLE
	OSP (FRONT/REAR)	AB-MFBOS	FULL-FLAT

*All models are equipped with a leg rest heater.

*The BBR models are equipped with cape holder and holder for hand dryer.

*The OSP models are equipped with a detachable swivel table, shockless movement (up/down and backrest), foot cushion (single size), and YUME SWING position setting function.

SEAT BEIGE BE [ES21] CAMEL CM [ES14] MOCHA BROWN [ES1] BROWN BR [ES12] BLACK BK [ES8] IVORY IV [ES9]



SHAMPOO CHAIRS

Multipurpose chairs provide high added-value to the salon space. Shampoo chairs with a reclining mechanism fit in well with wash units. These can be tailored according to salon services and design.

MOTORIZED CHAIRS



1. A1601S
[mell hair salon]



2

©Daniel Galvin



The elegant natural wood texture, traditional silhouette and reclining backrest and adjustable headrest enhance salon services, including facial care and shampooing.

A1601M

Traditional materials and textures ensure an evocative backwash experience.

MULTIPURPOSE MODEL

SU-M6AVT6/SP-YEB

W589×D945-1204×H916mm

SEAT: GREEN [VT6]

PIPING: BEIGE [VT5]

MULTIPURPOSE
CHAIR



A1601S

Retro styling that's reminiscent of a bygone era that's modernised with a refreshing, contemporary design.

SHAMPOO MODEL

SU-S6AVT5/SP-YEB

W589×D893-1143×H829mm

SEAT: BEIGE [VT5]

PIPING: DARK BROWN [VT2]



Lift-up marshmallow headrest

With a 90° rotatable lift-up, height-adjustable headrest, the natural headrest height reduces burdens on the head and neck when reclining. A shape designed to fit the head and the marshmallow-like soft high performance cushion provide exceptional reclining comfort.



When folded
(standard position)



When raised

Reclined model (exclusive for YUME OASIS)

The backrest reclining angle is limited to a maximum 30° (reclined backrest angle), which is the recommended angle when combined with the YUME OASIS basin unit.

*If you prefer to use the backrest also at the full-flat position, please purchase the standard specification.



SPECIFICATIONS

A1601M RECLINED MODEL SU-M6AL□□□

A1601S RECLINED MODEL SU-S6AL□□□

*□□□ will be replaced with upholstery colour.

SEAT (1601 models (piping colour))

DARK BROWN [VT2] (BEIGE [VT5])	BEIGE [VT5] (DARK BROWN [VT2])
GREEN [VT6] (BEIGE [VT5])	BLACK [VT1] (BEIGE [VT5])
RED BROWN [VT3] (DARK BROWN [VT2])	CAMEL [VT4] (BEIGE [VT5])

OPTIONS



When used



Stored

EXCLUSIVE HEADREST HOLDER FOR A1601M EA-VAP-MHA

The headrest holder can be stored by rotating.



EXCLUSIVE LUMBAR CUSHION EA-D83C□

*□ will be replaced with upholstery code.

CHAIR BASE (See page 41-43 for details.) Select from the following: LONG STROKE MODEL (SP-CHDN only) BASIC MODEL (SP-YE/SP-YC only) LONG STROKE MODEL

D. SERIES

Designed to create a strong physical presence that enhances any salon design setting and service requirement.

CADILLA M

The ultimate CADILLA with multi-functional features for styling and backwash services in both men's and women's salons.

SU-282CMNL5NL4/SP-AC
W573xD1020-1295xH933mm
SEAT: BLACK [NL5]
PIPING: CHARCOAL GREY [NL4]
FACE FINISH: CHROME PLATED (C)

MULTIPURPOSE
CHAIR



CADILLA SHAMPOO

Perfect for men's, women's and unisex salons, the classic CADILLA features a modern, sophisticated design that has endured for over 30 years.

SU-282GCNL5/SP-AC
W573xD955-1175xH830mm
SEAT: BLACK [NL5]
SURFACE FINISH: CHROME PLATED (C)



SHAMPOO CHAIRS

SEAT

PEARL BEIGE [CN21] PEARL SILVER [CN22] BLACK [NL5]

*Upholstery and piping colour options available. Prices may vary.

SURFACE FINISH

CHROME [C] MATT [D]

CHAIR BASE (See page 41-43 for details.) Select from the following:  LONG STROKE MODEL



CADILLA→P.38

STYLING CHAIRS

Ergonomically designed cushions and meticulous attention
to detail during the manufacturing process
ensure all client's enjoy a relaxing time in the salon.
Discover chairs that suit your salon perfectly.



1



1. CARRE
[tale hair design]

2. CHOCO
[Giorno by Dio]

3. COFF
[Beetle Grande]



4



5



6



7

5. MORB
[EVE hair lounge]

6. CADILLA
[PALETTE]

7. R.A.F #02
[MILK BY URA]



A design that captures trends including a simple and classic form, an antique upholstered finish, and upholstery that has the feel of well-used real leather. *Because the wooden parts and antique chrome coating parts are finished by hand, the wooden surface, colour, and texture differ slightly from product to product.

A1201

A vintage hairdressing chair appreciated for wooden armrests, a hand-studded backrest and retro styling that's convincing in every way.

SU-D2AWNVT1/SP-YAB
W615×D900×H785mm
SEAT: BLACK [VT1]
FOOTREST: WOOD [W]



A1202

An authentic retro styling chair with vintage features inspired by our rich hairdressing heritage.

SU-D2BSVT3/SP-YA
W640×D870×H810mm
SEAT: RED BROWN [VT3]
FOOTREST: U-SHAPE [S]



FOOTREST



Exclusive
for A1201



Exclusive
for A1202

WOOD [W]

CHAIR BASE (See page 41-43 for details.) Select from the following:

- LONG STROKE MODEL
- LOW-HEIGHT MODEL
- BASIC MODEL
- LONG STROKE MODEL

SEAT

- BLACK [VT1]
- DARK BROWN [VT2]
- RED BROWN [VT3]
- CAMEL [VT4]
- BEIGE [VT5]
- GREEN [VT6]



D.CLASSICS

Designs that tell a story. These chairs create a sense of presence that's warm and inviting as they evoke a unique and relaxing atmosphere in any salon.

CHOCO

The CHOCO styling chair is perfectly proportioned, strong and designed to perform. Contemporary, service orientated and supremely comforting.

SU-DIACVT3/SP-AC
W590×D970×H860mm
SEAT: RED BROWN [VT3]
ARMREST: CHROME [C]



HARP

Elegantly styled, delicately poised yet extremely durable HARP is adored for its all-round performance and design.

SU-DIBCVT2/SP-AJ
W665×D975×H810mm
SEAT: DARK BROWN [VT2]



Our innovative, original upholstery gives a feeling of high class and vintage quality. Four deep, chic colour variations give a greater range of colour-coordination to match the salon image.

ARMREST (CHOCO only)



WOOD-BROWN COATING [B]



CHROME [C]



MATT [S]

SEAT

BLACK [VT1]

DARK BROWN [VT2]

RED BROWN [VT3]

CAMEL [VT4]

BEIGE [VT5]



D-GALLEY S → P.107

CHAIR BASE (See page 41-43 for details.) Select from the following: LONG STROKE MODEL BASIC MODEL LONG STROKE MODEL



STYLING SOFA II

Unadorned form that embraces uncomplicated design while creating a high quality and energising salon space.

COFF

Every hairdressing service should be warm and inviting and this notion is perfectly embodied in the COFF. A thinner backrest that lends itself perfectly to cutting longer hair, the COFF is simply stylish in its form and design, extremely comfortable and functionally perfect.

SU-DOAAES12/SP-YA
W685×D890×H840mm
SEAT: BROWN [ES12]
FOOTREST:
WITHOUT ALUMINIUM BAR [A]



MORB

Eminently comfortable and robust, the MORB hairdressing chair combines classic design and sofa-style luxury with first-class functionality.

SU-D0BSES9/SP-YFL
W685×D885×H799mm
SEAT: IVORY [ES9]
FOOTREST:
WITH ALUMINIUM BAR [S]



Comfort

The three-layer cushion and optimal dimensions and angles of design support a comfortable posture at all times-and for any body type.



Operability of hairdressers

The backrest is low and thin to facilitate dealing with long hair and easy operation while seated on stool. Seat is removable for easy cleaning.



Meticulous manufacturing

Our products are made by skilled craftsman who impart the feeling of a luxury sofa with meticulous attention to quality, from painstaking sewing to aluminium bar footrest.

FOOTREST



WITHOUT
ALUMINIUM BAR [A]



WITH
ALUMINIUM BAR [S]

SEAT (single colour)

- WHITE [ES1] BLACK [ES8]
- IVORY [ES9] MOCHA BROWN [ES11]
- BROWN [ES12]

SEAT (two-tone colour: SOFA SUITE only)

- IVORY [ES9] / IVORY [MN3] MOCHA BROWN [ES11] / GREY BROWN [MN4]

CHAIR BASE (See page 41-43 for details.) Select from the following: LONG STROKE MODEL LOW-HEIGHT MODEL BASIC MODEL LONG STROKE MODEL

D.SERIES

The epitome of classic design centered on creating an aesthetically pleasing salon space that's bold, yet understated.

CADILLA

The combination of lasting performance, classic styling and gender neutral appeal contribute to the CADILLA styling chair's legendary status and global popularity.

SU-D03D CN21/SP-AD
W575×D980×H863mm
SEAT: PEARL BEIGE [CN21]
SURFACE FINISH: MATT [D]



CHAIR BASE (See page 41-43 for details.) Select from the following:

- LONG STROKE MODEL
- BASIC MODEL
- LONG STROKE MODEL

SEAT

- PEARL BEIGE [CN21] PEARL SILVER [CN22]

*Upholstery and piping colour options available. Prices may vary.

SURFACE FINISH CHROME [C] MATT [D]



CADILLA M→P.30



CADILLA SHAMPOO→P.30

Simple in form yet highly comfortable and stylish, natural wooden adornments enhance the visual appeal of R.A.F while creating an expansive salon space that focuses on relaxation and enjoyment.

#01

A neutral model that combines simple cushions and frames with wood materials.

SU-D5CFS2/SP-YAB
 W536×D866×H832mm
 SEAT: ASH BROWN [FS2]



#02

With its textured frame, natural wooden base and elegant design, R.A.F. #02 commands attention in any salon setting without overpowering the interior design.

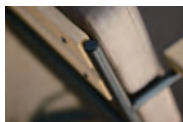
SU-D5DVT1/SP-YAB
 W578×D800×H792mm
 SEAT: BLACK [VT1]



Upholstery with fabric texture
 A newly selected vinyl upholstery, with unique and unadorned feel of fabric, is used. (used on #01 and #03).



Natural wood
 Plentiful natural wood is used for each part. The tone and grain of the wood is highlighted to create appealing and unique variations.



Iron frame
 Irregularities are intentionally formed in the surface of the black iron frame to create a finish with the feel of a rough material.

SEAT (#01)

● INDIGO BLACK [FS1]

● ASH BROWN [FS2]

● CANVAS BEIGE [FS3]

SEAT (#02)

● BLACK [VT1]

● DARK BROWN [VT2]

● BEIGE [VT5]

CHAIR BASE (See page 41-43 for the details.) Select from the followings:

● LONG STROKE MODEL ● LOW-HEIGHT MODEL

● BASIC MODEL ● LONG STROKE MODEL



R.A.F STOOL
 →P.84

FIORE

A strong robust aesthetic with thick chrome tubing and a body-hugging webbed seat that promotes comfort and ensuring style. A modern classic that will mature in popularity over time.

FIORE

SU-826N NL5/SP-YH
W565×D810×H790mm
SEAT: BLACK [NL5]



SEAT ● BLACK [NL5]

CHAIR BASE (See page 41-43 for details.) Select from the following:

🔗 LONG STROKE MODEL

🔗 LOW-HEIGHT MODEL 🔗 BASIC MODEL 🔗 LONG STROKE MODEL

CHAIR BASES

The application of leading-edge base technology
to perfect every service and
enhance the working experience.

CHAIR BASES

HOW TO CHOOSE YOUR BEST CHAIR BASE

The heart of a salon chair, the chair base

There are many differences between salon chairs and ordinary chairs, but the most important distinction is the lifting function. The chair base is responsible for this function. Inconspicuous yet present in every chair, it plays a vital role in client comfort and working efficiency. Find the perfect base for your salon chair from our unique range.

Three points to consider when choosing a chair base

1 Power

Electric

- The chair base can be raised and lowered frequently without causing a workload.
- Easy to raise and lower even clients of a larger stature.
- Less vibration during lifting.
- Smooth operation without the need for repeated steps.

Foot-operated

- No need for a power supply.
- Wide range of types.
- Low cost

2 Height to suit the clientele and treatment style

Low initial height

Easy to sit on with a low initial height. Especially ideal for the elderly and children, this is also recommended for practitioners of a shorter stature.

Basic

Standard height for both initial height and stroke. This is the most basic type, combining ease of sitting and treatment.

Long stroke

Can be raised to a higher position making it ideal for treatments delivered in a standing position, or in combination with shampoo chairs. Also recommended for taller practitioners.

Electric

Smoothly raises with the flick of a switch, without any jerking motion. The high stroke enables it to accommodate a wide range of clients, even tall ones. Friendly to tall barbers and hairdressers.

3 Design

Selected for compatibility with the upper part of the chair & ease of use.

Round base

All-rounder to suit any chair top.

- Stable
- Easy to clean
- Wide range of variations

5-legged base

Light in form, ideal for compact chair top.

- Light in appearance
- Relatively inexpensive
- Easy to move

Floor mount base

Slim and space-saving look with excellent stability.

- Easy to clean
- Stable

*Fixed to the floor and cannot be moved after installation.

ELECTRO HYDRAULIC CHAIR BASES

LOW INITIAL HEIGHT & LONG STROKE MODEL LONG STROKE MODEL

The long stroke base enables taller hairdressers to work more smoothly and efficiently while ensuring the client is comfortable throughout. One-touch operation allows hairdressers to raise the chair smoothly without the need to repeatedly pump with your foot.

SP-PBN

(DARK GREY)

Curved form brings a gentle sense of security.

INITIAL HEIGHT: 340mm

STROKE: 280mm



CLASSIC E CLASSIC E

Engineered to showcase our classic barber chair designs and reveal their full potential, this chair base is compatible with most models, allowing for motorised functionality to be added to your favourite chairs. Available in 3 colour options.

AN-BCES

Urban and sophisticated silver chair base on the high street.

INITIAL HEIGHT: 410mm

STROKE: 205mm

COLOUR: SILVER



AN-BCEB

A graceful and stately black chair base to match the chic black upper chair.

COLOUR: BLACK



AN-BCEW

Elegant, washed-out chair base to match the white-framed chair tops.

COLOUR: WHITE



CHAIR BASES

HYDRAULIC CHAIR BASES

LOW INITIAL HEIGHT MODEL LOW-HEIGHT MODEL

A design that is especially suited to senior citizens and children, the initial low-height makes it easy to sit down while also recommended for hairdressers of a shorter stature.

SP-YFL

FLAT BASE C (HAIRLINE)

Stylish, minimalist and simple design.

INITIAL HEIGHT: 318mm
STROKE: 142mm



SP-FM

FLOOR MOUNT BASE (CHROME)

The ultimate clean form made possible by the fixed system.

INITIAL HEIGHT: 316mm
STROKE: 142mm



BASIC MODEL BASIC MODEL

*Initial height can be raised to 370mm as a customisable option at additional cost. Specify when ordering.

The most basic base type facilitating ease of sitting and the provision of styling services.

SP-YE

(HAIRLINE)

A simple, exclusive design that's easy to combine with a variety of chair designs.

INITIAL HEIGHT: 349mm
STROKE: 142mm



SP-YEBC

(BASE PLATE: BLACK COATING)

Two-tone colours for a classic and prestigious look.

INITIAL HEIGHT: 349mm
STROKE: 142mm



SP-YEB

(BLACK COATING)

Matt black gives it a high-quality vintage look.

INITIAL HEIGHT: 349mm
STROKE: 142mm



SP-YA

(GRIND FINISH)

Geometric shapes give it an elegant appearance.

INITIAL HEIGHT: 341mm
STROKE: 142mm



SP-YH

(GRIND FINISH)

Rounded leg tips create a modern, gentle atmosphere.

INITIAL HEIGHT: 341mm
STROKE: 142mm



SP-YAB

(BLACK COATING)

Sharp, urban design with tight black pipes.

INITIAL HEIGHT: 341mm
STROKE: 142mm



SP-YEG

(CHAMPAGNE GOLD)

100th anniversary model in gorgeous champagne gold.

INITIAL HEIGHT: 349mm
STROKE: 142mm



SP-YAG

(CHAMPAGNE GOLD)

100th anniversary model in gorgeous champagne gold.

INITIAL HEIGHT: 341mm
STROKE: 142mm



SP-YAW

(WHITE COATING)

A slender, glamorous form that's a perfect match for attractive chair designs.

INITIAL HEIGHT: 341mm
STROKE: 142mm



SP-YEW

(WHITE COATING)

Soft white and reassuring shape that brings gentleness to the space.

INITIAL HEIGHT: 349mm
STROKE: 142mm



LONG STROKE MODEL LONG STROKE MODEL

This product can be raised to a high position, making it optimal for providing service while standing, or for combining with a shampoo chair. It is also highly recommended for taller hairdressers, enabling them to work more easily.

SP-AC

(CHROME)

Stable form with mirror finish for added sharpness.

INITIAL HEIGHT: 380mm
STROKE: 175mm



SP-AD

(MATT)

Matt finish with a low sheen that evokes craftsmanship.

INITIAL HEIGHT: 380mm
STROKE: 175mm

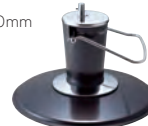


SP-AJ

(WOODY BROWN COATING)

The form's weight and woody colour give it an antique look.

INITIAL HEIGHT: 380mm
STROKE: 175mm





BACKWASH UNITS

Not all wash units are the same. Takara Belmont wash units pursue values of superior comfort, precision functionality and seamless operation for clients and hairdressers. Unprecedented wash units for unparalleled comfort, design and function.



1. YUME
[collet]



2

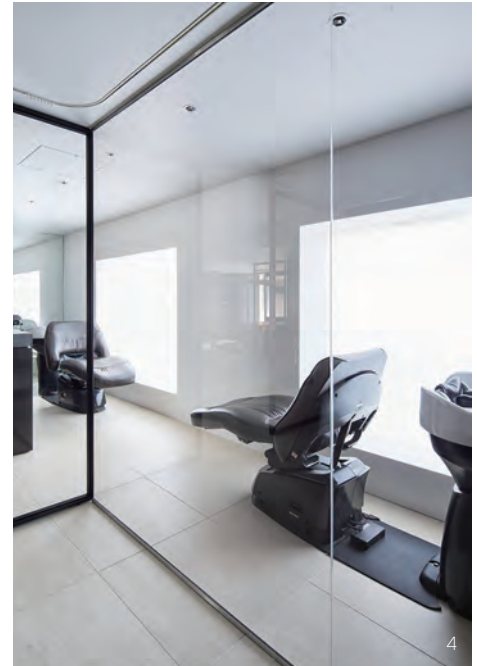


3

- 2. YUME NOBLE
[Wiz hanamigawa]
- 3. YUME SUITE
[Alla moda]



5



4

4. YUME ESPOIR
[umber]

5. YUME SUITE
[stars]

6. YUME NAGOMI
[Fraiz Ginza]



6



7



8

7. YUME SWING
[Rim]

8. YUME OASIS
[N-3]



10



11

9. W SWING YUME
[Andar]

10. RS PRIMO
[CHICCA Togane]

11. RS SWING
[HONDA AVEDA FUTAMATAGAWA]

[Learn more](#)

Catalogue



Video



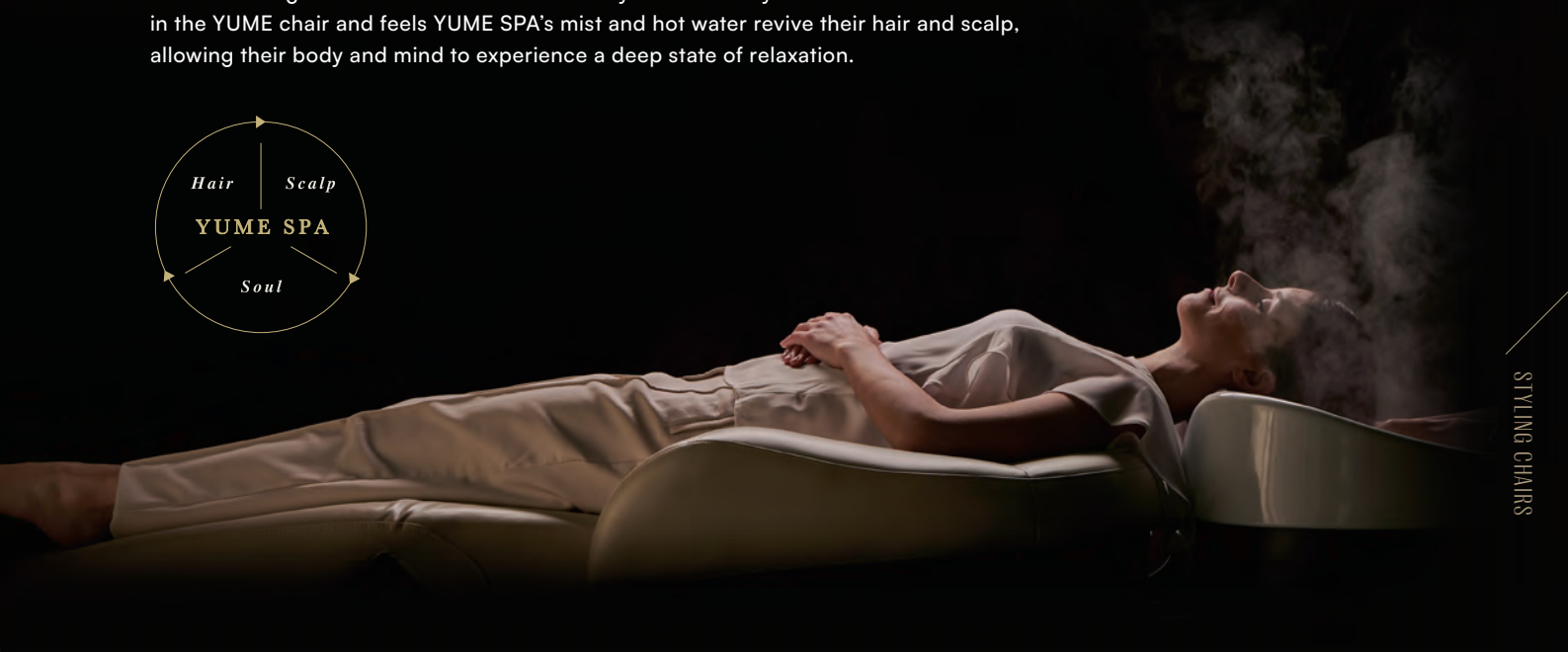
Y U M E S P ATM

Dream Shampoo

What is the YUME SPA (YUME HEAD SPA) ?

YUME SPA is a shampoo treatment developed exclusively by Takara Belmont to provide the ultimate hair and scalp care experience. Based on the soothing YUME SHAMPOO technique and enhanced by the remarkable comfort of the YUME wash unit, YUME SPA incorporates the health-giving, moisturising and well-being elements of a spa experience.

Create unimaginable sensations of comfort as your client fully reclines in the YUME chair and feels YUME SPA's mist and hot water revive their hair and scalp, allowing their body and mind to experience a deep state of relaxation.



STYLING CHAIRS

The unique YUME SPA SYSTEM provides an enduring and unforgettable sensory experience.



- 1. SPA MIST II** microscopic mist processor
Ensures complete control over the mist temperature and volume.
- 2. YUME** shampoo chair
Invites your clients to experience the pinnacle of luxury and comfort.
- 3. YUME STOOL**
Affords hairdressers complete freedom of movement for more effective spa services while reducing back pain even during longer treatments.

What does the YUME bring to your salon?

The shampoo zone is so much more than just a functional space for washing hair — it's where you can deliver exceptional care to cleanse the scalp and hair to good health, as your client enjoys heightened sensations of pure luxury and relaxation.

When you perform YUME SHAMPOO or YUME SPA (YUME HEAD SPA) with the above YUME SPA system, it elevates your shampoo and treatment services while creating new and unforgettable First Class Experiences in the salon.

THE ONE

A single THE ONE all-inclusive styling chair and service unit expands the possibilities for service efficiency and space optimisation, while ensuring unparalleled comfort and refinement.

THE ONE

EX-ONPM-MN3
W720xD1950xH985(Stroke 210) mm
SEAT: IVORY [MN3]

- YUME SPA
- FACE
- MASSAGE
- FOOT & NAIL



Variation

Item Code	Leg rest	Headrest
EX-ONPM-□	Adjustable With Footrest	With Headrest

* □ will be replaced with upholstery colour.
* Without headrest spec. is available as an option.

Electric drive Yume basin

THE ONE houses the Yume fully motorised basin

Incorporating our most prestigious Yume motorised basin, THE ONE effortlessly transitions the shampoo position with a single touch. Every salon service — from haircutting and shampooing to hair colouring, perming and head-spa rituals — can be expertly delivered with THE ONE, which allows for a smooth, high quality salon journey.



*Patent pending

Option

NECK CUSHION

- [NECK CUSHION] EA-ONN
- [NECK CUSHION SET] (Neck cushion + Side Pads) EA-ONNSET
- [HEAD CUSHIONS] EA-YMH2



LUMBAR CUSHION

EA-ONC-□



FOOT CUSHION

EA-ONFC-□



BACKREST CUSHION

EA-ONSC-□



FOOTREST PAD

EA-ONP-□



Seat

- BLACK [SH1]
- CINNAMON BROWN [ST4]
- ECRU BEIGE [ST2]
- BLACK [MM1]
- DARK BROWN [MM2]
- IVORY [MN3]

OPTIONAL

- RESISTECH STAIN-RESISTANT UPHOLSTERY
- WHITE [RT1]
- IVORY [RT2]

YUME SERIES

Learn more



Provides the ultimate in reclining comfort and relaxation, as it delivers the most luxurious dream-like spa-style shampoo and treatment experience.

YUME

The pinnacle of technical innovation, comfort, design and ergonomics that presents the world's most luxurious and innovative backwash system. A modern representation of advanced innovation, design and ergonomics.

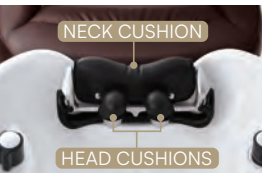
EX-YMXL/SU-YM SH24
W760×D1985×H625-975
(HEIGHT OF NECK POSITION: 600-950) mm
SEAT: DARK BROWN [SH24]
FOOT CONTROL: LEFT SIDE

YUME SPA
HAND & NAIL



STYLING CHAIRS

FEATURES*



Comfortable neck device
Two gel-filled head cushions and a gel-filled neck cushion combine with YUME's unique Neck Device to provide a 3-point support system that alleviates neck and back strain while maintaining optimal positioning even for longer treatments.

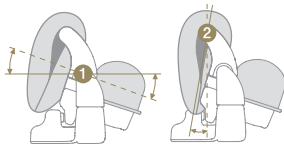


Diagram of the mechanism
Two-axis rotating structure fits the neck regardless of any shape and body type.



Shower mode



Low-splash mode

Dual function shower head
This shower head takes optimal water volume and pressure into consideration, and offers a high degree of user friendliness. It can be switched between shower and low-splash mode, depending on the desired treatment.
*Optional for some countries.

OPTIONS*



YUME SHAMPOO CAPE
(antimicrobial-processed)
(PEARL WHITE)
EA-YMCP2
NECK CUSHION¹ EA-YMN
HEAD CUSHIONS¹ EA-YMH2
LEG REST COVER² EA-YMVCL
¹Included with main unit.
²YUME only

SEAT ● BLACK [SH1] ● IVORY [SH15] ● DARK BROWN [SH24] ● BROWN [NL12]

*Common to YUME series except W SWING YUME.

YUME SERIES

Provides the ultimate in reclining comfort and relaxation, as it delivers the most luxurious dream-like spa-style shampoo and treatment experience.

YUME DX

Embrace the power of innovation to transform every day shampoo and treatment services into luxury VIP experiences. The absolute pinnacle of technical accomplishment and service refinement.

EX-YM2XLA/SU-YM2AM SH15
W760×D2000×H990
(HEIGHT OF NECK POSITION: 610-950) mm
(without rotation)
W1670×D1500×H650-990mm
(with 90° rotation)
Minimum space requirements:
W2700×L3000mm (with 90° rotation)
SEAT: IVORY [SH15]
SEAT ROTATION: CLOCKWISE
FOOT CONTROL: LEFT SIDE

YUME SPA
FACE
MASSAGE
HAND & NAIL



*Seat rotation to be selected from clockwise or counter-clockwise rotation

COUNTER-CLOCKWISE ROTATION WITH RIGHT SIDE FOOT CONTROL:

EX-YM2RA/SU-YM2AM

COUNTER-CLOCKWISE ROTATION WITH BOTH SIDES FOOT CONTROL:

EX-YM2RAF/SU-YM2AM



90° rotatable seat



Individually adjustable leg rest



Removable headrest



One-touch foot control

OPTIONS LEG REST COVER EA-YM2VCL / BACKREST TOWEL COVER EA-YM2TCB / HEADREST TOWEL COVER EA-YM2TCM

SEAT ● BLACK [SH1] ● IVORY [SH15] ● DARK BROWN [SH24] ● BROWN [NL12]

See page 52 for YUME series common features and options.

YUME NOBLE

The embodiment of pure indulgence, luxury and motorised innovation in the plushest of backwash beds.

EX-ESYMZHYBR/SC-YMSIHB/EA-ESBP/SU-YMNBEDIHY4
W800×D1958×H925
(HEIGHT OF NECK POSITION: 800) mm
LEG REST: SYNCHRONISED FULL-FLAT
BODY COVER: MATT BROWN [BR]
SEAT: URBAN BLACK [EDIHY4]

- YUME SPA
- MASSAGE
- HAND & NAIL



YUME SUITE

Large, plump seats that gently wrap around the body. Comfortable and suitable for long head spas.

EX-ESYMHYB/SC-YMSIHB/EA-ESBP/SU-YMSISTI
W800×D1958×H925(HEIGHT OF NECK POSITION: 800) mm
LEG REST: SYNCHRONISED FULL-FLAT
BODY COVER: BLACK [B]
SEAT: PERSIAN GREY [ST1]

- YUME SPA
- MASSAGE
- HAND & NAIL



BACKWASH UNITS

FEATURES (YUME NOBLE)



Full lie-flat and leg rest
A full lie-flat, bucket-shaped leg rest ensures complete relaxation.



Sublime comfort
Experience the sensation of being enveloped in a chair with a supremely soft cushion and a double-cushioned backrest.



Luxury
With client comfort and operator ergonomics as our key considerations, two synergic upholstery finishes and textures combine with premium quality materials to ensure unparalleled comfort for the client, and a supreme service experience for the operator.

FEATURES (YUME SUITE)



Completely flat bed with 0 degree inclination
In the YUME SUITE's new full lie-flat position, the leg rest is horizontal, achieving a completely full lie-flat position.
In addition, by optimising the length of the leg rest, even tall people experience comfort and entire body relaxation.



A new shape suitable for getting on and off from the waist
By providing a space between the seat and the leg rest where clients can put their legs, they can get on and off smoothly from the side of the chair. It also makes it easier to sit deeply and comfortably in the proper position.

OPTIONS

LUMBAR CUSHION FOR YUME NOBLE
EA-YMNBCEDEHY4 (2 tones)
EA-YMNBCEDE* (1 tone)

[LEG REST COVER (SYNTHETIC LEATHER)]
FOR YUME NOBLE EA-YMNBLCLEDO□□**
FOR YUME SUITE EA-YMSILCLSTO□□**

*For replacement
**□□ will be replaced with upholstery colour.

SEAT (YUME NOBLE)

- URBAN BLACK [EDIHY4]
- DARK BROWN [ED2]
- BLACK [EDI]

SEAT (YUME SUITE)

- PERSIAN GREY [ST1]
- ECRU BEIGE [ST2]
- SAXE BLUE [ST3]
- CINNAMON BROWN [ST4]

BODY COVER

- BLACK [B]
- MATT BROWN [BR]

See page 52 for YUME series common features and options.

YUME SERIES

Provides the ultimate in reclining comfort and relaxation, as it delivers the most luxurious dream-like spa-style shampoo and treatment experience.

YUME ESPOIR

Upgrade luxury with a folding leg-rest for even more personalised comfort.
Bring the imagination of pure indulgence and the promise of spa-style luxury to life.

EX-ESYMHKB/SC-ESPLHB/EA-ESBP/SU-ESPL SH1
W650×D1893×H930(HEIGHT OF NECK POSITION: 800) mm
BACKWASH UNIT
CHAIR: PREMIUM LINE
LEG REST: SYNCHRONISED FULL-FLAT
BODY COVER: BLACK [B]
SEAT: BLACK [SH1]
*Stool sold separately

- YUME SPA
- MASSAGE



This product offers treatment space from between the chair and the basin.
The separated chair unit and basin unit allows hairdressers to stand between the basin and the chair to perform services such as shoulder massages.



Backwash basin
This basin is ideal for shampooing and spa treatments performed from behind the client.
HEIGHT OF NECK POSITION: 800mm ONLY (for seated operation)

OPTIONS

- [ABOVE-FLOOR PIPING COVER & KIT]

ABOVE-FLOOR PIPING KIT L(R)

EA-ESPL(R)

ABOVE-FLOOR PIPING COVER A-L(R)

EA-ESPAL(R)

ABOVE-FLOOR PIPING COVER B

EA-ESPB

ABOVE-FLOOR PIPING COVER C

EA-ESPC
- [LEG REST COVER]

FOR PREMIUM LINE

EA-ESPVCL

SEAT

- BLACK [SH1]

● MOCHA BROWN [SH7]

● IVORY [SH15]

● DARK BROWN [SH24]

BODY COVER

- BLACK [B]

See page 52 for YUME series common features and options.

[Learn more](#)


YUME NAGOMI

YUME NAGOMI embraces the spirit, soul and technical precision of the YUME series in every way, while expanding high-end possibilities for more space sensitive salon environments.

EX-YMIXIHGL1

W660×D1640-1860×H930

(HEIGHT OF NECK POSITION: 900) mm

FOR STANDING OPERATION

SEAT: WHITE [GL1]

LIGHT YUME SPA



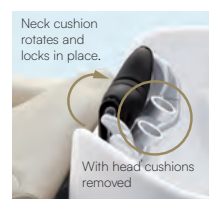
CHAIR BASES

Newly-conceived reclining position provides both comfort and efficiency.

Face angle is held steady while client reclines, making it easier to provide services.



Specifications ensure work efficiency.



The new neck device makes shampooing easier even on clients wearing perm rods.



The foot pedal enables the chair to be reclined and adjusted quickly into the most suitable position.



Regular position



For shorter clients

Footrest assists clients who might need it.

For shorter clients or others who might need it, this slide-out footrest can make it easier to get in and out of the chair smoothly and to sit comfortably.

VARIATION

HEIGHT OF NECK POSITION	MODEL NO.
820mm (For seated operation)	EX-YMIXIL
900mm (For standing operation)	EX-YMIXIH

*Selectable at purchase

OPTIONS



BOOSTER SEAT CUSHION
EA-YMIXIS

BACKREST VINYL COVER
FLOOR SHEET FOR FOOTREST

[REPLACEMENT PIPING COVER & KIT]

REPLACEMENT PIPING COVER

REPLACEMENT PIPING KIT H

(for standing operation)

REPLACEMENT PIPING KIT L

(for seated operation)

*Included with main unit.

EA-YMIXVCB

EA-YMIXIFS

EA-YMIXIPC

EA-YMIXIPKH

EA-YMIXIPKL

SEAT

WHITE [GL1]

BLACK [GL2]

DARK BROWN [GL3]

MOCHA BROWN [GL4]

See page 52 for YUME series common features and options.

YUME SERIES

Provides the ultimate in reclining comfort and relaxation, as it delivers the most luxurious dream-like spa-style shampoo and treatment experience.

YUME OASIS

A new representation of luxury where high-end refinement meets technical innovation for immeasurable convenience and sophistication.

EX-OAYMYM-CG

W500×D596×H931

(HEIGHT OF NECK POSITION: 900) mm

BODY COVER: CHAMPAGNE GOLD [CG]

YUME SPA*

FACE

MASSAGE

HAND & NAIL

FOOT & NAIL

*Reclined posture: LIGHT YUME SPA



FLOOR UNIT

EX-OAYM-F

W447×D607×H135mm

*Chair and floor unit sold separately.



YUME OASIS×BRAMU (Full lie-flat posture)



YUME OASIS×VINTAGE ALT+ (Reclined posture)

Create private time and space with freedom.

The high-quality one-stop service takes communication between hairdressers and clients to the next level. Your salon clients are sure to become loyal clients who will return frequently for many years to come.

OPTIONS

NECK CUSHION*	EA-OAYMYMN
HEAD CUSHIONS*	EA-YMH2
CLEANING NOZZLE	EA-OACL
MORTAR EMBEDDING FRAME	EA-OAFWYM
(required for mortar floor)	
FLOOR MATERIAL KIT	EA-OAYMFK-WH (GR)
(white [WH], grey [GR])	
*Included with main unit.	

BODY COVER



WHITE [WH]



BLACK [BK]



DARK BROWN [DB]



CHAMPAGNE GOLD [CG]



DEEP NAVY [NV]



RED [RD]

Chairs recommended for use in combination



BRAMU →P.22



LUAR →P.25



VINTAGE ALT+ →P.29

See page 52 for YUME series common features and options.



YUME SWING

The basin slides to enable full lie-flat shampoo, enhancing the quality of service in a single location.

EX-YMSBNYM/EX-YMSAR/

EA-YMSPY

W1348×D1024×H850

(HEIGHT OF NECK POSITION: 800) mm

SLIDE ARM FOR REAR LAYOUT

UNDERFLOOR PIPING COVER

- ☐ YUME SPA
- ☐ FACE
- ☐ MASSAGE
- ☐ HAND & NAIL
- ☐ FOOT & NAIL



Height of neck position appropriate for a seated position

The height of neck position is set at 800mm, appropriate for providing services from behind the client while the hairdresser is seated.

Two different layouts that enable the basin position to be selected. Exclusive cabinets are available.

FRONT LAYOUT



Styling position



Shampooing position

*Minimum space requirements: W2200×L3000mm

REAR LAYOUT



Styling position



Shampooing position

*Minimum space requirements: W3000×L2200mm at minimum

Cabinet with mirror exclusive for front layout



High-capacity storage space

CB-YMSFX
W700×D500×H2010mm

Side cabinet exclusive for rear layout



Two drawers Shelf

CB-YMSRX
W565×D305×H710mm

SPECIFICATIONS

BASIN	SLIDE ARM	PIPING COVER
BACKWASH BASIN EX-YMSBNYM	FOR REAR LAYOUT EX-YMSAR	Wall piping EA-YMSPK
	FOR FRONT LAYOUT EX-YMSAF	Underfloor piping EA-YMSPY Above-floor piping EA-YMSPU
REVERSE SLIDE LAYOUT* BACKWASH BASIN EX-YMSBNYM2	FOR REVERSE SLIDE REAR LAYOUT EX-YMSAR2	Wall piping EA-YMSPK2
	FOR REVERSE SLIDE FRONT LAYOUT EX-YMSAF2	Underfloor piping EA-YMSPY2 Above-floor piping EA-YMSPU2

*The "reverse slide layout" specifications that allow the basin to be located on left side.

*For the reverse slide layout, select the exclusive basin, slide arm, and piping cover.

*A reverse slide layout for the side basin is not available.

See pages 7-33 for chairs that are recommended for use with these products.

*Chair sold separately

Chairs recommended for use in combination



BRAMU →P.22

LUAR →P.25

See page 52 for YUME series common features and options.

YUME SERIES

Provides the ultimate in reclining comfort and relaxation, as it delivers the most luxurious dream-like spa-style shampoo and treatment experience.

W SWING YUME

The YUME basin swings to both sides. Place it in a selected part of the salon to create a semi-private room that's both secluded and easy to use.

EX-YMWVDH
W500xD1064xH900
(HEIGHT OF NECK POSITION: 900)mm
COLOUR: DARK WOOD [D]

- YUME SPA*
- FACE
- MESSAGE
- HAND & NAIL
- FOOT & NAIL

*Reclined posture: LIGHT YUME SPA

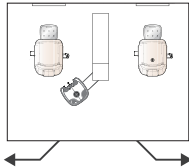


Designed with both client and staff comfort in mind, the YUME basin can be placed in the room to create a comfortable space. This simple design harmonises with a variety of spaces.

SHAMPOO POSITION



The basin can be swung left or right. Clients can smoothly shift into the shampoo position while seated.



STYLING POSITION

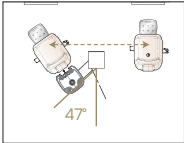


The basin is usually stored between two working station. The swing table can be used as a trolley for styling.

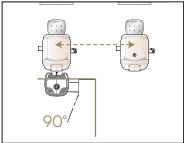


*Image only

PITCH (length from chair centre to chair centre)



2200-2400 pitch
(arm angle 47°)



1200-1700 pitch
(arm angle 90°)

Please specify the pitch length at purchase.

VARIATION

HEIGHT OF NECK POSITION	MODEL NO.
800mm[L] (For seated operation)	AY-YMWC[L]
900mm[H] (For standing operation)	AY-YMW[H]

*[L] will be replaced with colour code.

OPTIONS

NECK CUSHION* EA-OAYMYMN
HEAD CUSHIONS* EA-YMH2

*Included with wash unit.

See page 52 for YUME series common features and options.

COLOUR NATURAL WOOD [N] DARK WOOD [D]

Chairs recommended for use in combination: Motorised chair Page 16 to 25.

YUME ACCESSORIES

YUME WAGON

Features a wipe-clean stainless top panel with hooks for hanging shampoo towels to ensure shampoo services are easily performed.

SR-ES WH [WHITE]
SR-ES WD [WOOD]
W380×D440×
H835mm



YUME STOOL

Pursuing maximum comfort for seated shampooing.

EX-YMST
W415×D415×
H485-672mm

Tilts 360° allowing free movement



ESPOIR STOOL

Compact yet functional stool for seated shampooing.

EX-ESST
W360×D390×
H474-680mm

Tilts forward and back



M-STOOL

Compact and functional stool with tilting motion for seated shampooing.

EX-MST
W360×D443×
H660-705mm

Tilts forward and back



[Learn more](#)



YUME HEADBATH

As an accessory for the YUME series, this presents a transformative head spa experience that promotes relaxation and calm, as well as actively improving scalp health, and well-being.

YUME HEADBATH

AY-YHBYMS
W454×D350×H600mm

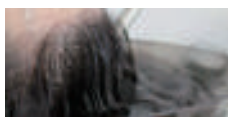
*The YUME HEADBATH does not include a shampoo basin.



Enjoy 5 minutes of blissful, calming sensations as warm water envelops the scalp and head.



Pleasant murmuring sound of a stream.



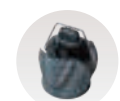
Removing oxidized sebum while retaining moisture on the scalp.



In Perfect Synergy with YUME.



Simple setup while the client is in the treatment position.



EA-YHBBAG

EXCLUSIVE STORAGE BAG
Store wet equipment in the waterproof, easy-to-carry bag after use.
*Included with main unit.

SPECIFICATIONS

Select one from two types according to the shape of the wash unit basin.

*1 The showerhead for this product is only the dual function (switchable) type.
*2 Rotary type: Rotate the cap to open and close the drain when filling the basin with water.
Flip type: Turn the cap upside down when filling the basin with water.

COMPATIBLE MODELS

YUME, YUME DX, YUME NOBLE, YUME SUITE, YUME ESPOIR, YUME SWING, YUME OASIS*, W SWING YUME*

* Full-flat only

Drain cap (*2)	Basin & neck (*1)	For backwash (YUME) basin	
		AY-YHBYMS	For YUME OASIS and W SWING YUME AY-YHBYMS2
Rotary type			
Flip type			AY-YHBYMO

YUME EYELASH DEVICE

[Learn more](#)



Simply by attaching devices to the YUME basin, your 'shampoo space' will transform into a comfortable eyelash & esthetic space.

YUME EYELASH DEVICE SET [Arm Support and Eyelash Tray]

EA-YMELD

ARM SUPPORT: W662×D197×H140mm

EYELASH TRAY (TRAY SIZE) : W155×D185×H20mm

Note: The right image shows the optional accessory YUME EYELASH PILLOW is attached.



OPTION
YUME EYELASH PILLOW
EA-YMELP
W201×D131×H97mm

COMPATIBLE MODELS

YUME, YUME DX, YUME NOBLE, YUME SUITE, YUME ESPOIR, YUME SWING

Note: Not available with YUME NAGOMI, YUME OASIS and W SWING YUME.

RSIII SERIES

Go beyond simply shampooing a client's hair - immerse them in a luxurious hair care experience at the backwash. Japanese quality and features based on our extensive research provide tangibly enhanced shampoo experiences.

RS ELITE

Service elevation in the form of a beauty couch that promotes enhanced relaxation for sublime shampoo services.

AY-PO70X/AY-ELI-SH8
W574×D1740×H893-1012
(HEIGHT OF NECK POSITION: 864-951) mm
FRONT COVER: WHITE
SEAT: WHITE [SH8]



RS PRIME

Premium wash unit that delivers compact comfort without compromise in space limited environments.

AY-PO69X/AY-S195X
W592×D1254×H893-1012
(HEIGHT OF NECK POSITION: 864-951) mm
FRONT COVER: BLACK
SEAT: BLACK [NL5]



Basin design ideal for shampoo-reason 1

To improve access to a client's nape, a key comfort spot, the back of the basin is lower than the front. This design promotes more effective shampooing and massaging.



Basin design ideal for shampoo-reason 2

With a larger and deeper basin than on previous models and shampoo fixtures that leave plenty of space in the centre, the RSIII makes the stylist's job easier than ever.



Tilting basin adjusts to client height.

From its basic vertical position, the basin can be tilted down 12° or up 8° to accommodate each individual client.



Compact, low-splash, aerating shower head comes as standard specification.



Tightly sealed drain opening prevents hair from getting caught.



Takara Belmont's high-tech neck cushion provides comfort for clients of all sizes.

SEAT (RS ELITE) ● WHITE [SH8] ● BLACK [SH1] ● IVORY [SH15] ● DARK BROWN [SH24] ● SMOKY BROWN [SH26]

SEAT (RS PRIME) ● WHITE [NL1] ● BLACK [NL5] ● DARK BROWN [NL24]

FRONT COVER (RS ELITE/RS PRIME) ● BLACK ○ WHITE

RS AXIS

Invite your client to experience pure comfort with this unique lumbar support design and slidable seat to ensure service perfection in complete comfort.

AY-PO70X/AY-AXNSLES13
EA-RS3W/EA-RS3LCES13
D1517-1667xH893-1012mm
(HEIGHT OF NECK
POSITION: 863-951) mm
FRONT COVER: WHITE
SEAT: RED [ES13]
*Select short backrest version
when combining with global spec.
RSIII basin unit.



RS PRIMO

Envelop your client in comfort and luxury by simply adjusting slidable seat to their body contour. Tilt the basin to cradle their neck in comfort and extend the leg rest for pure relaxation and indulgence.

AY-PO69X/SU-PRNSLLSH24
EA-RS3LCSH24
D1545-1695xH893-1012mm
(HEIGHT OF
NECK POSITION: 863-951) mm
FRONT COVER: BLACK
SEAT:
DARK BROWN [SH24]
*Select short backrest version
when combining with global spec.
RSIII basin unit.



DUAL FUNCTION SHOWER HEAD (PRIME CHAIR excepted)



Shower
mode



Low-splash
mode

OPTIONS (PRIME CHAIR excepted)



FLOOR
FOOTREST
EA-FS1



BOOSTER
SEAT CUSHION
EA-NRSS 99

EXCLUSIVE NECK CUSHION*
LEG REST COVER FOR RS ELITE
REPLACEMENT FLOOR SHEET
ABOVE-FLOOR PIPING KIT

EA-RS3N
EA-COVCL
EA-RS3FS
EA-RS3P

[BACKREST COVER]
FOR RS ELITE
FOR AXIS/PRIMO

EA-VCBLONG
EA-VCBSHORT

*Included with wash unit.

SEAT (RS AXIS)

WHITE [ES1] BLACK [ES8] IVORY [ES9] MOCHA BROWN [ES11] BROWN [ES12] RED [ES13]

SEAT (RS PRIMO)

WHITE [SH8] BLACK [SH1] IVORY [SH15] DARK BROWN [SH24] SMOKY BROWN [SH26]

FRONT COVER

BLACK WHITE

RS SERIES

Compact, stylish, and highly functional to promote an extremely effective use of space.

RS SWING

The intelligent, technically advanced backwash solution that serves two styling stations.

EX-RS2ZDBI3

W977×D470×H951

(HEIGHT OF NECK POSITION: 900) mm

BODY COVER: DARK BROWN [DB]

PITCH BETWEEN CHAIR AND CHAIR: 1300mm

*Other pitch lengths also available.



BACKWASH UNITS


BODY COVER



DARK BROWN
[DB]



PEARL WHITE
[PW]



SIDEWASH & CABINETS

A wash unit with a fold-away basin and storage function.

Simple yet user-friendly wall mount basins.

Unique products that match effective salon space usage with design.



1. MAJOLICA PORTO
[CHILL CHAIR]
2. SALON CONSOLE
[GOLD KID]

MAJOLICA SERIES

A wall-mounted sidewash basin with a simple design. Showcasing Japanese quality and perfectly curated design, it remains an extremely popular choice worldwide.

MAJOLICA PORTO

Ergonomically ideal, immaculately furnished mountable sidewash basin. Double tap or single tap with thermostatic control.

DOUBLE TAP WITH FITTINGS AND THERMOSTATIC CONTROL

BASIN
EX-SB 2W
FAUCET FITTINGS
EA-SB P(S)2
BASIN COLOUR: WHITE [W]
OUTER DIMENSIONS:
W640 (±7) x D535 (±10) mm



SINGLE TAP WITH FITTINGS AND THERMOSTATIC CONTROL

BASIN
EX-SB 1W
FAUCET FITTINGS
EA-SB P(S)1
BASIN COLOUR: WHITE [W]
OUTER DIMENSIONS:
W640 (±7) x D535 (±10) mm



BASIN & FAUCET FITTINGS (with thermostatic control)

(FOR EX-SB 2W)
DOUBLE TAP WITH FITTINGS AND THERMOSTATIC CONTROL



COLOUR VARIATIONS



(FOR EX-SB 1W)
SINGLE TAP WITH FITTINGS AND THERMOSTATIC CONTROL



OPTIONS



NECK CUSHION*
EA-NBN
*Included with
faucet fittings

*Please always use the MAJOLICA PORTO basin and faucet fittings as a set.
*Faucet fittings include tap, thermostatic control knob, thermostat, trap housing, neck cushion, neck base, fitting, shower head & hose and shower head holder.
*Two drain pipes are available: S-and P-trap model

SALON CONSOLE

The art of innovation is embodied in this ingenious space saving fold-away hairdressing and barbering service concept. This simple, stylish service concept fits into any salon design which makes this model especially popular.



S SIZE DOUBLE SET-UP

S-CUD-S2

MIRRORS

KF-SLM800×2

W2800×D315-756×H895

(HEIGHT OF NECK POSITION: 770) mm

PANEL: ROSE WOOD

COUNTER: SHELL WHITE

MIRROR: KF-SLM800



OPTION
STAINLESS VERSION

COLOUR VARIATIONS

- (panel)

● DARK GREY

● ROSE WOOD

● MAT WHITE
- (counter)

○ SHELL WHITE
(melamine facing plate)

SPECIFICATIONS

SIZE	SET CODE
S	S-CUG(W)(D)-S
L	S-CUG(W)(D)-L
LL	S-CUG(W)(D)-LL

Single tap mixer

Double tap thermostatic control

Removable basin for easy cleaning

Drain cover and hair catcher

Temperature control knob Tap

*Selectable at purchase. Prices may vary.



PROCESSORS

The combination of advanced technology
and quality continues to advance
our approach to hair care,
so salons become more effective and known
as purveyors of exceptional service
and enhanced outcomes.

CARE DRY G

Gently dry the hair while retaining moisture. A beautiful base dry is only possible with CARE DRY G, leading to soft hair that's easier to style. For straight hair, using as a base dry promotes easy styling while its use as a diffuser is ideal for wavy and curly hair.



Leaves the hair nice and moist to make it easy to style

Boosts productivity of salon work

Operates quietly and creates a relaxing atmosphere

Also used for colouring and perming, and has a cooling function too.



PINK GOLD:
AK-DRYS-PGW/AK-DRYS-4ST

BLACK:
AK-DRYS-BK/AK-DRYS-4ST

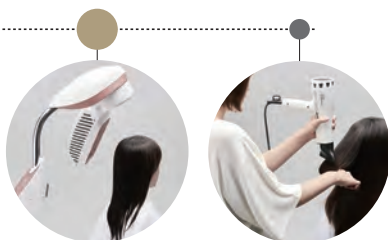
VANILLA WHITE:
AK-DRYS-VW/AK-DRYS-4ST

W681 (HEAD: 170, STAND: 681) x D707 (INITIAL POSITION) x H1473 (STROKE: 200) mm
POWER CORD LENGTH: 3m

Hair-drying process: for Blow finish

Shampooing Towel-drying Rough-drying Blow-drying and styling

Gently dries with straight air while locking moisture inside the hair, leading to smooth, shiny hair that is easy to style.



Hair-drying process: for Diffuser finish

Shampooing Towel-drying Rough-drying Styling

Even difficult-to-dry voluminous hair, use CARE DRY G as a diffuser as it can dry with less tangling straight airflow.



There are many benefits for both clients and staff working in the salon.

C

BENEFITS FOR CLIENT

- Improves the feel and texture of the hair.
- Hair colour lasts longer.
- Clients can relax and feel comfortable while CARE DRY G warms up.
- Waiting times are reduced and treatments are carried out smoothly.

H

BENEFITS FOR HAIRDRESSER

- Base-drying conditions the hair and makes it easier to blow-dry.
- The salon is more spacious, allowing for a smoother operation.
- It gives hairdressers more time to spend with their clients, making it easier to deliver more personalised services.

A

BENEFITS FOR ASSISTANT

- Opportunities to provide technical support to senior staff, such as colour application, are increased, leading to skills development.
- Hospitality time is created by offering drinks and exchanging magazines.
- Less time spent in contact with the warm air of the hair dryer, which helps prevent rough hands.

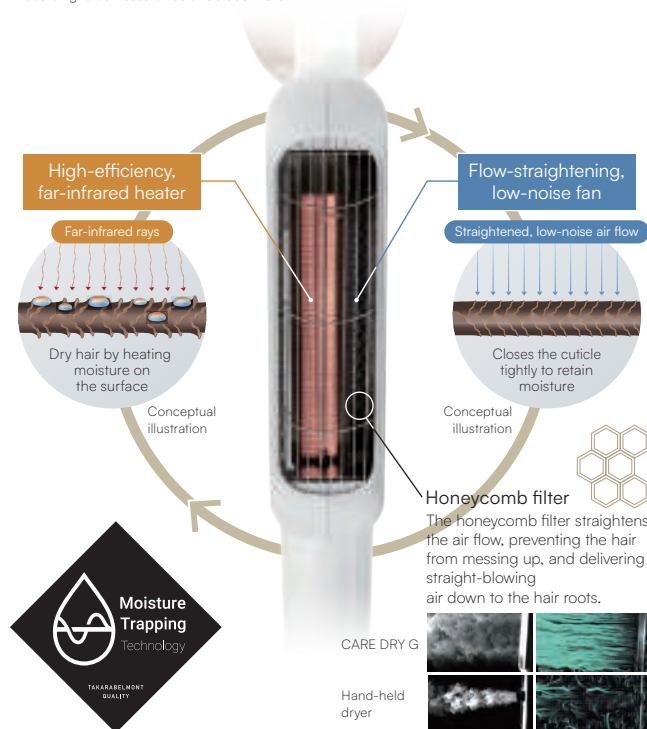


Innovative hair care technology that uses heat and air

Moisture Trapping Technology First in the industry*!

Instead of blowing hot air, CARE DRY G features separation of heat and air. Applying heat to remove excess moisture from the hair surface and blowing air to trap sufficient moisture in the hair, CARE DRY G promotes silky and glossy hair that is easy to style.

*According to our research as of October 2018

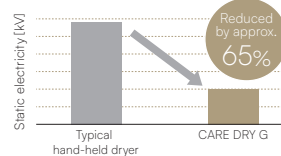


Moisture retaining styling.

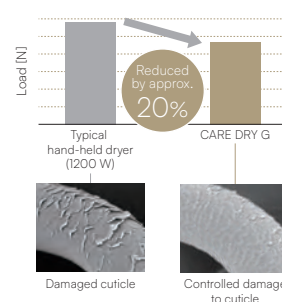
A more comfortable hair-drying experience.

CARE DRY G enhances hair gloss and manageability.

Higher moisture retention controls static electricity.

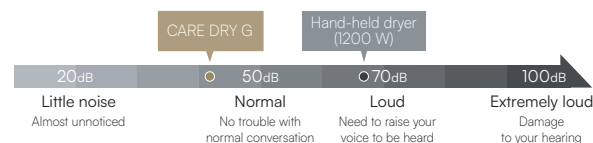


Straighter air flow reduces the brushing load on the hair.



CARE DRY G ensures a comfortable experience.

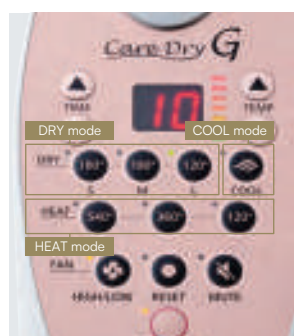
Quiet operation allows clients to relax and enjoy a moment to themselves, whilst ensuring easy communication with their hairdresser.



Various functions in a single unit. Simple operation.

A new concept of drying called 'moisture drying' has been added, with three modes to enhance hair design and styling. By freely selecting the mode and setting time, it can be used for a variety of menus and helps salons to increase productivity.

Modes and buttons

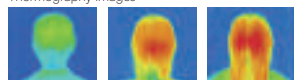


DRY mode

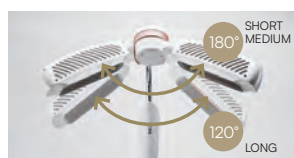
Roughly dries hair in a way that suits the hair length. Moisture is trapped in the hair to make it easy to style. This mode is also good for a consistent level of drying-work in the salon.

SHORT	MEDIUM	LONG
Swing angle: 180°	Swing angle: 180°	Swing angle: 120°
Operating time: 5min.	Operating time: 7min.	Operating time: 10min.

Thermography images



The amount of heat and swing angle varies with the hair length. Short hair is dried, with the nape and around the ears kept away from excess heat. Long hair is dried evenly from the roots to the ends.



HEAT mode

Facilitates colour fixation, the chemical reaction of perming agents, and penetration of treatment into the hair. You can choose between whole and partial heating of the hair, depending on the salon menu. Using this mode boosts not only hair designability but also the efficiency of salon work.

AUTO	MANUAL
Swing angle: 540°	Swing angle: 360°
Swing angle: 120°	Swing angle: 120°

For evenly heating all of the hair covered in a hair cap or plastic wrap

For heating all of the hair in other ways

For heating long hair effectively and evenly.



AUTO

The heater unit repeats one and a half rotations (once forward and twice backward).

MANUAL

The heater unit rotates.

COOL mode

This mode facilitates fixation of colour and treatment (after the hair is heated). This is also recommended for controlling the sensation of warmth in hot season.

COOL
Swing angle: 180°



CARE DRY G meets many other detailed needs.

• Remaining time is changeable during the operation, for example, when you want to dry the hair more or make the staff's hands free for a little bit longer.

• Operating temperature is changeable depending on the hair design and the client's taste.

• To return the heater unit to the initial position, make sure the unit is not operating and then hold down the RESET button.

ROLLER BALL F

As a world-first innovation that's earned iconic status in the world of hair care and colour, ROLLER BALL F, with its distinctive rotating ring, creates theatre and gives life to hair at any styling station. Its far-infrared accelerator uses a high-efficiency carbon heating element with fast, flexible irradiation temperature control. ROLLER BALL F expands the possibilities for hair design, delivering genuine results and maximising the potential for business growth.



MOBILE VERSION
AK-S23S-B BLACK
W(HEAD 485/LEGS 681) ×
D1014×H1513 (STROKE 200) mm



WALL-MOUNTED VERSION
AK-S23A-B/AY-DRASNSL BLACK
W485×D785×H673mm



SPECIFICATIONS

VERSION	COLOUR					
MOBILE						
	AK-S23S-B BLACK	AK-S23S-W WHITE	AK-S23S-BR BROWN	AK-S23S-SL SILVER	AK-S23S-R RED	AK-S23S-CG CHAMPAGNE GOLD
						
	AK-S23A-B BLACK	AK-S23A-W WHITE	AK-S23A-BR BROWN	AK-S23A-SL SILVER	AK-S23A-R RED	AK-S23A-CG CHAMPAGNE GOLD

WALL-MOUNTED COMPONENTS



WHITE
AY-DRASNW

GREY
AY-DRASNG

SILVER
AY-DRASNSL

OPTION

COOLING FAN FOR COOLING DOWN THE NAPE AREA
*The cooling fan is a factory-installed option. Specify when ordering. Prices may vary.



MOBILE
VERSION
AK-S23SF□□



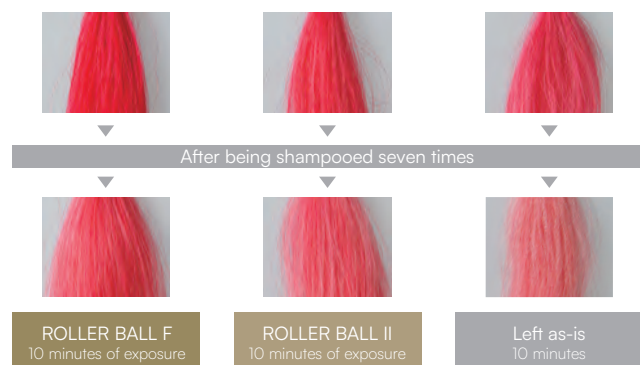
WALL-MOUNTED
VERSION
AK-S23AF□□

*□□ will be replaced with colour code.



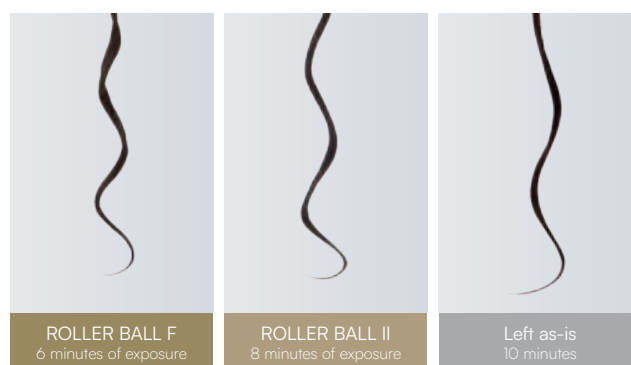
Promotes penetration and retention of colourants and perm agents

Degree of Penetration into Hair and Persistence
(comparison using an acidic dye)



With ROLLER BALL F, the dye was absorbed and took hold evenly. Even after the hair was shampooed seven times, there was relatively little loss of colour.

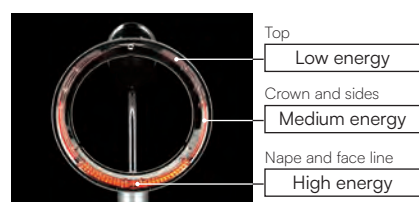
Comparison of Curling Strength
(comparison using a curling agent)



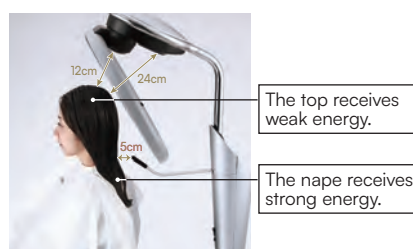
Despite the shorter exposure time of ROLLER BALL F, the chemical agents are absorbed quickly, and the curl takes full effect, all the way to the tips.

Colour, perms and treatments penetrate evenly

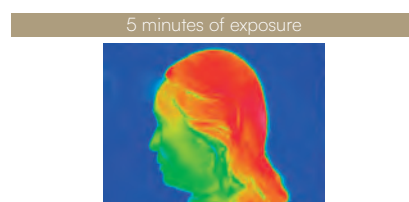
The heater is divided in to three blocks - the top, crown and sides, the nape and the faceline. The amount of irradiation for each is changed to achieve more even temperature distribution. The top section, which tends to be hotter, is set to a lower irradiation energy level. The nape section, which needs to be heated firmly is set to a higher irradiation energy level. This maximises the even penetration of colour, perms and treatments in different areas leading to a beautiful and uniform finish.



The element is divided into three blocks, with the amount of energy set to the appropriate level for each block.



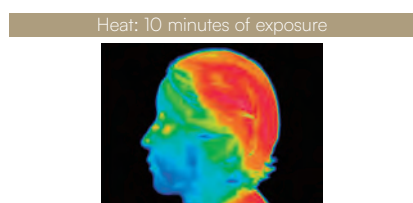
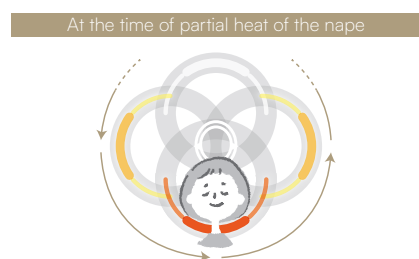
Example of setting



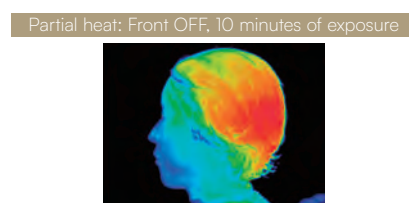
There is a uniform distribution of temperature from the top to the nape.

Efficient irradiation of only the necessary areas

Taking advantage of the fast ON/OFF response performance of the carbon heater, irradiation is controlled ON/OFF at three locations (front, side and nape) while the ring is rotating. Only necessary areas can be irradiated, e.g. only the nape. By irradiating only those parts of the body with a high level of entrapment or areas that are less susceptible to the action of the solution, the client can receive the treatment comfortably. It is also possible to fix the ring to the required area.



Turning off the beam to the front area, which heats up more quickly and is more sensitive to heat, slightly lowers the temperature at the sides and nape. The client enjoys a comfortable treatment, and the technician is able to efficiently process sections that need more energy while keeping the whole area warm, leading to improved results.



High performance carbon heaters

Instead of a conventional ceramic heater, ROLLER BALL F uses a new, highly efficient carbon heater that uses high-purity carbon (99.8% pure) as the heating element. Its greatest feature is its overwhelming speed and power. It enables circular processing, which was difficult in the past, and was the first in the industry* to be installed in a far-infrared accelerator.

*As of August 2011.

From start-up to 40° in about 2.5 minutes.

It's 2 minutes less!*

Compared with conventional ceramic heaters, carbon heaters have a faster rise to the set temperature and have significantly more energy in the wavelength range that acts on the hair and chemicals, so they firmly promote colour fixing and perm (dual-step tepid permanent wave agent) reaction even in a short time. It improves the efficiency of salon work.

*Compared with our conventional model.

SPA MIST II

Delivers uncomplicated ultra-fine mist hair and scalp treatments in the most compact, quietest and convenient way. Enjoy complete control over the temperature and quantity of mist and expand your service menu to offer head spa, hand care and scalp treatments.



STAND VERSION

AK-160SBR/AY-160S
W295×D375×H750-1200
(WITH HOSE UPRIGHT) mm
COLOUR: BROWN



MOBILE VERSION

AK-160SW/EA-160WB
W550×D330×H700
(TROLLEY) mm
COLOUR: WHITE TROLLEY: BLACK



Open Mist Ball Nozzle

Simply attach to the shampoo basin for an easy Open Mist treatment.



Aromatherapy Diffuser Holder

Attach to the Open Mist Ball Nozzle to combine mist with a soothing aroma that enhances relaxation for the client.



BLACK [B]



BROWN [BR]



WHITE [W]

ACCESSORIES (included with the main unit; Different in some countries)

NAME	PHOTO	DESCRIPTION	CODE	NAME	PHOTO	DESCRIPTION	CODE
WATER PURIFIER		<ul style="list-style-type: none"> Housing Cartridge Purifier checker 	EX-TJ6	CAP JOINT N		2 sets	—
FLEXIBLE HOSE		1 unit (350 to 680mm)	—	<p>*When the water purifier cartridge reaches its capacity and becomes exhausted, pure water will not be produced, which could cause equipment to malfunction. Check the water using the purifier checker, and replace the cartridge at regular intervals.</p> <p>• Cartridge only: Code IP07EC • Purifier checker only: Code BM03419</p>			

OPTIONS (sold separately)

NAME	PHOTO	DESCRIPTION	CODE	NAME	PHOTO	DESCRIPTION	CODE
OPEN MIST BALL NOZZLE		<ul style="list-style-type: none"> Nozzle with adhesive disk Extra adhesive disk Coupling tube×2 	EA-160BN	TREATMENT CAP (WHITE)		<ul style="list-style-type: none"> For use with YUME and Open Mist Ball Nozzle×2 (Joint opening at the top of the head. 3 mist release holes.) 	EA-CMC-YB
AROMATHERAPY DIFFUSER HOLDER		<ul style="list-style-type: none"> Holder for diffuser pad Aromatherapy diffuser pad×5 *Aromatherapy oil is not supplied. *Must be used with Open Mist Ball Nozzle. 	EA-160AH			<ul style="list-style-type: none"> For use with Rear Shampoo or YUME×2 (Joint opening between top of the head and back of the head. 3 mist release holes.) 	EA-SMC-RSW
FLEXIBLE HOSE HOLDER		<ul style="list-style-type: none"> 1 unit (400mm) Holds the flexible hose. Used for Head Spa, treatments, colouring, and perming in a styling chair or barber's chair. 	EA-160HH			<ul style="list-style-type: none"> For use with styling chair×2 (Joint opening at the back of the head. 2 mist release holes.) For use with barber's chair×2 (Joint opening at the top of the head. 2 mist release holes.) 	EA-SMC-SW EA-SMC-CA
HAND CARE CAP CAPO		<ul style="list-style-type: none"> 1 piece Transparent plastic cap for hand care. 	EA-160HCCP	PERMING CAP, COLOURING CAP (SILVER)		<ul style="list-style-type: none"> Large (for perming)×1, Small (for colouring)×1 (Joint opening at the back of the head. 2 mist release holes.) 	EA-SMC-PC
HEADBAND (Renewed, a little thicker and longer.)		<ul style="list-style-type: none"> 3 pieces *Improves adhesion at face line when using caps. 	EA-200NT2			<ul style="list-style-type: none"> Large (for perming)×2 (Joint opening at the back of the head. 2 mist release holes.) Small (for colouring)×2 (Small is same size as Treatment Cap. Joint opening at the back of the head. 2 mist release holes.) 	EA-SMC-PCB EA-SMC-PCS

*Aromatherapy diffuser pad×25 EA-160AB



Healthy hair is at the root of all beauty

The hairstyles that clients long to have are only possible with healthy, supple hair, down to the tips. SPA MIST II moisturises the scalp, hair and mind with a soft, fine mist. The combination of YUME SPA with a YUME series wash unit and SPA MIST II, is where you can comfortably experience a complete hair care menu, as well as colouring and perms, to give your hair a beautiful finish while caring for its health and well-being. By focusing on the power and potential of mist, Takara Belmont developed an ultrasonic transducer to generate a mist of microscopic water particles at exceptionally low temperature. Vibrating at 1.6 million times per second, this ultra-fine mist has transformed processing technologies. And, by significantly reducing the operating temperature, SPA MIST II enhances treatment experiences and outcomes, while eliminating the risk of heat damage to the hair and scalp that's associated with traditional steam processors.



Function & Performance

Open Mist and a mist cap transform ordinary treatments into extraordinary hair care experiences.

OPEN MIST

Warmth creates comfort

- Makes it easier for staff to deliver a more comfortable shampoo and scalp treatment.
- The mist and warmth combine to relax the client.



SCALP CARE

Opens the pores to cleanse the scalp

- The moisturising and warming effect opens pores to loosen keratotic plugs and debris.
- With minimal burden on the scalp, debris and keratotic plugs are removed for a cleansed, beautiful scalp.



HAIR CARE

Penetrates deep into hair for longer-lasting effect

- Opens the cuticle layers so that treatment particles can penetrate deep into the hair.
- Cooling closes the cuticles to lock ingredients in the hair and keep it healthy.



COLOUR

Even colouring, minimal fading

- The microscopic mist fills the cap, where it permeates every hair strand with warmth ensuring an even finish.
- Cooling seals acid hair dye pigments into the hair for longer-lasting, more vibrant results.



PERM

Beautiful ridges in a short time

- Uniform heating gently promotes the softening process throughout the hair.
- Creates beautiful ridges in minimal time.



HAND CARE

Moist, soft hands

- Heated mist enhances the cleansing and moisturising of hands.
- Allows added value to hand care services to be introduced to your salon.

Easy control, easy setting

Mode selection keys

Simply press a key to select the mode you want, and SPA MIST II automatically reaches the perfect temperature and amount of mist required for the treatment.



Compact and stylish design



OPEN MIST

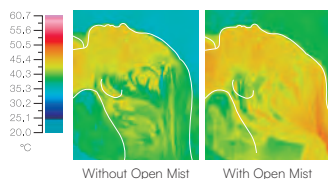
Hair temperature change (during shampoo)

Without Open Mist

- Hair gradually cools, resulting not only in less lather but also a cold lather.
- The client feels colder.

With Open Mist

- More shampoo lather is generated and the hairdresser's hands glide easily through the hair.
- The client experiences a warm, comfortable sensation that extends behind the ears.



SCALP CARE

State of pores and scalp



Before treatment
Hardened sebum clogs pores.



8 minutes of heating, 48°C
Mist heating
Moisture spreads throughout scalp, opening pores and liquefying sebum.



After shampoo
Debris is removed and pores are open and clean.

MICRO MIST

Learn more



Fully programmable and mobile, MICRO MIST enhances chemical service outcomes by opening the cuticle layer at 40°C-50°C and re-sealing the cuticle to lock-in colour, treatments and chemical service products.



AK-200NIW/AY-200NI
W(HEAD 385/ LEGS 696)×
D775×H1550 (STROKE 150)mm
COLOUR: WHITE

PERMEATION
Deeper into hair

FIXING
Set in place

UNIFORMITY
Even effect to the entire hair

Perfect for multiple-application treatment



OPTIONS

NAME	PHOTO	CODE
WATER PURIFIER (Housing, cartridge, purifier checker) 1		EX-TJ6
CARTRIDGE ONLY	—	BMO3416
HARDNESS TESTER ONLY	—	BMO3419
HEADBAND		EA-200NIT2
HEAD GUARD (3 PCS.) 1		—
HEAD GUARD (2 PCS.) 2		EA-200NIFG2
NECK SUPPORT CUSHION (1 PCS.)	—	CADP27A0

1 Included with main unit; Different in some countries 2 When placing an additional order
*5cm longer stand is available as an option.

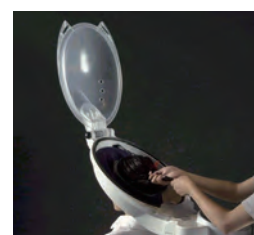
Controllable mist temperature and quantity

As the mist is produced by an ultrasonic transmitter, temperature control is easier than with high-temperature steam mist, which increases comfort levels for the client. The amount of mist produced can be freely adjusted. Automatic setting of mist level, temperature level and time is also possible.



Designed for client and operator comfort

During the treatment, clients feel relaxed without seeing the hood in from of their eyes. Thanks to the retracted hood, the hood opens to allow easy application of a second or third application, even with multiple-application treatment products.



Separate ducts designed for the cooling air and mist

Mist emanating from the sides into the hood gently envelops the entire head, while cooled air is released from the rear centre to quickly cool the heated mist down.



Water tank ready to be used for 20 clients

With a large tank that shows the amount of the water left inside, a full tank of water serves approximately 20 clients (when used for 8 minutes per client). Even during busy hours, operation proceeds smoothly without interruption.



Saves space when stored

The hood section can rise vertically so that it does not take space for storage. Its damper structure gives a soft feeling.



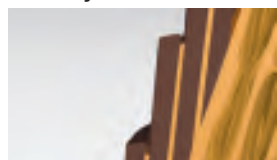
Features common to SPA MIST II and MICRO MIST

How SPA MIST II and MICRO MIST work to repair damaged hair.

What does damaged hair mean?

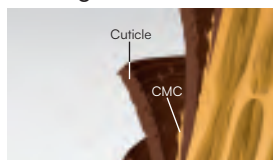
Hair damage is a condition where surface cuticles peel away and inner elements are seeping out through the cuticle layers. When losing its CMC (cell membrane complex), gaps are caused; these 'flow channels' does not allow colouring chemicals and perming solutions to penetrate deeply in the hair and they allow protein to escape from the hair. The important point of hair care is to fill and repair the channels between the chemicals with treatment agents.

Healthy hair

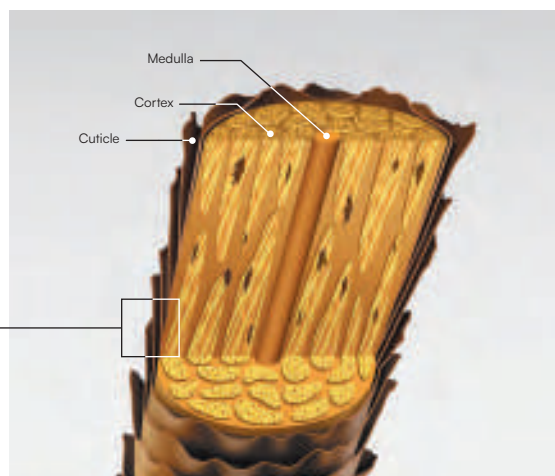


CMC is found between cuticles and it securely guards the hair.

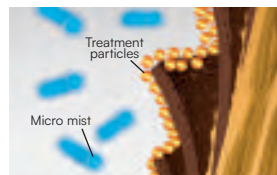
Damaged hair



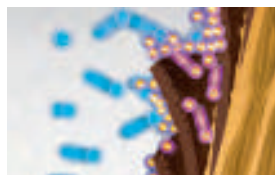
CMC flows out of hair and cuticles are being peeled off. The inner part of the cuticle itself is also damaged.



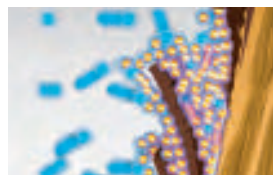
Action of micro mist (01-04: conceptual diagrams)



01
Micro mist heated to a temperature of 40-50°C (105-125°F) helps swelling of hair. Cuticles on the surface open out.



02
Heated micro mist activates the molecular movement of treatment particles and lets them penetrate into the hair through opened cuticles.



03
Treatment particles penetrate even deeper into the hair shaft, caring cuticles and supplying CMC.



04
By cooling down the air rapidly, treatment particles get fixed to the hair.

Performance of Mist Processors

*Similar results were achieved with treatment agents.

POINT 1

Uniform heating for a consistent finish

Mist fills the cap, infusing the hair with uniform moisture and warmth. Enveloped by a gentle mist, every strand of hair is naturally infused with cosmetic ingredients for a consistent finish.

POINT 2

Sustain the treatment effect with fast cooling

The cooling function locks treatment particles and colour pigments into each hair shaft. The mist heating and cooling functions combine to achieve longer-lasting results.

POINT 3

Relaxation

Taking relaxation to the next level, Open Mist provides gentle heating for comfort, along with a soothing aroma for a high-class hair care experience.

HAIR CARE

Penetrates deep into hair for longer-lasting effect

- Opens the cuticle layers so that treatment particles can penetrate deep into the hair.
- Cooling closes the cuticles to lock ingredients in the hair and keep it healthy.

Level of penetration and durability

Data 1, 2, and 3 are based on tests in which the dying capacity and level of penetration on a hair bundle are assessed using acid dye on human grey hairs.

Data 1:

Surface comparison (after applying dye)

	Immediately after treatment	After 7 shampoos
With mist treatment Heating: 15 min. Cooling: 5 min.		
	The blue dye adheres well, and there is little colour loss even after 7 shampoos.	
Without mist treatment 15 min.		

Data 2:

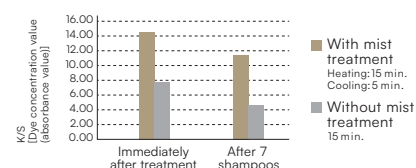
Cross section comparison (after applying dye)

	Immediately after treatment	After 7 shampoos
With mist treatment Heating: 15 min. Cooling: 5 min.		
	A large amount of blue dye has penetrated the hair with little colour loss even after 7 shampoos.	
Without mist treatment 15 min.		

Data 3:

Comparison of dying capacity and lasting strength

The hair bundle in Data 1 was measured with a spectrophotometer and a graph was made using the K/S value, which is an equivalent of the dye concentration value (absorbance value).



Measuring the dye concentration by absorption of light, when compared to a hair bundle in which the dye sets naturally, a mist-treated hair bundle has higher dying capacity and greater durability just after treatment and even after seven shampoos.



BEAUTY & SPA

A product collection with safety and reassurance at its foundation
to perfect the performance of salon services.
Takara Belmont applies a wealth of innovation,
expertise and world-class quality to beauty salons
and spas including esthetics,
eyelash extensions and nail services.



1. RICHE
[YELLFORME CALIN]
2. CHERIE
[JOYBOX River plus]
3. REINE II
[YELLFORME CALIN]

EYELASH CHAIR RICHE

A specialist eyelash treatment chair aimed at improving the comfort of clients and technicians. This chair is a dedicated product that combines know-how gained in the medical field, such as ophthalmology chairs, while realising improvements in safety, comfort and workability.

RICHE

SC-EL14IES9
W695×D850-1700×H1265 mm
SEAT: IVORY [ES9]

- EYELASH
- HAND & NAIL
- FOOT & NAIL



WHITE
[ES1]



BROWN
[ES12]



Webbing technology brings hammock-like comfort.



Contoured pillow gently supports the head and neck.



Chair's upright position saves space and allows various procedures and services.



Leg rest moves independently to allow foot care at the same time.



Chair, trolley, and stool are all easily within line of sight for stable operation.

OPTION



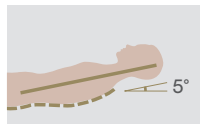
LUMBAR CUSHION
EA-D83C□□□□
*□□□ will be replaced with upholstery colour.



Arm supports with two positions reduce physical burden.



Viewing angle minimises fatigue 35°
*Actual angle varies for each person.



Reclines to a comfortable position 5°



Facial care also available while performing nail care services.

RICHE STOOL

Comfortable stools for long treatment sessions.

SC-ELSES9
W536×D536×H735mm
INITIAL HEIGHT: 450mm
STROKE: 195mm
SEAT: IVORY [ES9]



RICHE WAGON

Trolley with assist trays that can be rotated & lifted to increase work efficiency.

SR-WA141
W647×D543×H692-935mm
ASSIST TRAY INNER
DIMENSIONS: W200×D140mm



RICHE NAIL TABLE

Nail table allows the practitioner to provide nail services at the same time.

EA-EL14IT
TABLE TOP:
W230×D330mm
COLOUR: BROWN
*A set includes both left and right tables.



A large seat with low-resistance cushion and lumbar support enables practitioners to work for long periods.



Trolley with elevating and spinning tray offers greater efficiency.



Tables are installed above both armrests of the RICHE. This makes it possible to perform nail services even when the chair is in a reclining position.
*The tables are attached to the RICHE body and cannot be easily removed.

SEAT

WHITE [ES1] IVORY [ES9] BROWN [ES12]

YUME EYELASH DEVICE→P.60

NAIL CHAIR REINE II

CIL

A nail chair designed to be more comfortable for both clients and technicians that enables the provision of various beauty services. Foot wagon can be stored under the chair when not in use, enhancing seating comfort, design and saving space.

SC-NA121WHT/EA-NA121F/EA-NA121T

W740×D840×H1170mm (chair only)

W740×D1220×H760mm (when reclined, chair only)

SEAT: WHITE [WHT]

FACE HAND & NAIL FOOT & NAIL



FOOT WAGON

EA-NA121F W750×D460×H190mm

*Cushion included with chair part



OPTION



EXCLUSIVE TABLE

EA-NA121T

W540×D323×H255mm

*Can be fixed to armrests and can be mounted to either left or right or both left and right.

SEAT WHITE [WHT]



NAIL TABLE CHERIE

CHERIE

A high-quality, basic nail table that matches a variety of spaces.

UF-NATCWW/UF-NATCFW

W900×D450×H760mm

TABLE TOP: WHITE

FRAME: WHITE

★ Service outlet available only in 100V



UF-NATCNW/UF-NATCFW
TABLE TOP: NATURAL BROWN
FRAME: WHITE



COLOUR VARIATIONS (table top) WHITE NATURAL BROWN COLOUR VARIATIONS (frame colour) WHITE

NAIL COUNTER & WAGON FINA

FINA

Counter and trolley dedicated to nail services. Whilst compact, it can hold a UV light and all the tools needed for treatment, and also provides space for treatment.

COUNTER & TROLLEY

SR-NA121CWB

W522×D312×H758mm

TOP TABLE: MELAMINE FACING PLATE

FRAME: STEEL (POWDER COATING)

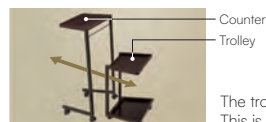
CASTER: URETHANE



NATURAL [N]



BROWN [B]



The trolley can be stored below the counter and stacked by magnets. This is a simple, space-saving design that allows for simultaneous conveyance.

FOOT REST & PEDI STOOL

FOOT REST SP

SC-NAFRA

W505×D304×

H450mm

FRAME:

CHAMPAGNE GOLD



PEDI STOOL SP

SC-NAPSA

W340×D340×

H200mm

FRAME:

CHAMPAGNE GOLD



ACCESSORIES

Since these items are used frequently every day,
Takara Belmont provides high-quality products
with innovative details.

Exceptional products that provide hidden support
for professional services.



1. LIBRO
[THE DAY]

2. ASISTA II
[Wiz Hanamigawa]



3

STOOLS

Professional quality stools for hairdressing salons that combine driveability and smooth vertical lifting and lowering.

D-STOOL ALUMI

An ultra-smooth running styling stool that gives hairdressers pure comfort and agility.

SC-246C
W620×D620×H460-660mm



D-STOOL CLEAR

The functionality of the D-STOOL is retained, but with a clear seat that increases the sense of originality and quality.

AS-241
W620×D620×H460-660mm



THEIA STOOL

A supreme styling stool with smooth casters and 360° rotation to give hairdressers complete service control.

SC-THSSMN3
W487×D487×H465-657mm
LEG FRAME: SILVER [S]
SEAT: IVORY [MN3]

SEAT

- IVORY [MN3]
- CAMEL [VT4]

*Black leg frame same as R.A.F STOOL is used for camel [VT4].



R.A.F STOOL

Stools that allow you to enjoy the ageing of solid wood (oak) and the luxury and warmth that only natural wood can offer.

SC-RFS
W490×D490×H453-645mm
*Natural wood is used for the seat.



PROCESSORS

WAITING CHAIRS

Waiting chairs also function as consultation chairs and these have same design as the styling chairs in the THEIA series, creating a sense of unity in the salon.

THEIA WAITING CARRE-W SWEET LINE

The square backrest brings a cool, chic look to any salon.

SC-W3APMN2
W565×D585×H745mm
COLOUR: DARK BROWN [MN2]



CIRK-W BITTER LINE

The rounded backrest gives a gentle, elegant impression and is suitable for any salon.

SC-W3BBVT2
W560×D595×H790mm
COLOUR: DARK BROWN [VT2]



- SEAT (Sweet line) PURPLE BROWN [MN1] DARK BROWN [MN2] IVORY [MN3] DARK BROWN [VT2] CAMEL [VT4] BROWN [NF1]

*MN leather is processed to create a fabric-like texture and it feels different from ordinary leather.

TOWEL WARMERS / COOLERS

HC-6

Light and compact. Fits any interior space. It can also be placed vertically with the door on top.

TOWEL WARMER
DIMENSIONS:
OUTER: W300×D307×H230mm
INNER: W220×D220×H135mm
CAPACITY: 6 LITRES
COLOUR: WHITE



HC-6(K)
COLOUR: BLACK



HC-6(SUS)
COLOUR: STAINLESS SILVER

CC-8

Towels and other items can be kept cool and used smoothly during treatment.

TOWEL COOLER
DIMENSIONS:
OUTER: W300×D340×H261mm
INNER: W227×D182×H152mm
CAPACITY: 6 LITRES

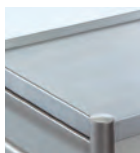


TROLLEYS

D-GALLEYS

A multi-purpose hairdressing trolley with an ingenious retractable shelf that serves as a holder for dryers, brushes and utility bowls.

SR-DGS
W562×D310-635×H916mm
FRAME: STAINLESS
TOP PLATE: STAINLESS
*Two trays are removable and washable.



MN01 WAGON

Simple stainless steel trolley with three tiers.

SR-MN01
W520×D300×H830mm
FRAME: STAINLESS
DEPTH OF
THREE TRAYS: 25mm



ST STACKS N

A stackable trolley concept that meets every service purpose and neatly stows away. Stainless model.

SR-2013 [BLACK]
W500×D400×H865mm
TRAY: STAINLESS
FRAME: POLYETHYLENE COATING
*Two trays can be folded for storage.



STACKS 21

A stackable trolley concept that meets every service purpose and neatly stows away. Black or white selectable.

SR-2012 [BLACK]
SR-2011 [WHITE]
W500×D400×H865mm
FRAME:
POLYETHYLENE COATING
*Two trays can be folded for storage.

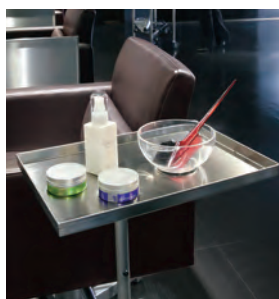


SERVICE TABLES & TRAYS

ASISTA II

A hairdresser's tray that can be attached to the styling chair. This tray rotates so it can be used in a variety of positions and serve multiple service situations. It can be folded for storage when not in use, saving space.

SR-AS2MN
W365×D250×H797*mm
*Height from the floor to the top of the tray (dimensions when combined with the SP-YE).
When attached, the chair seat is approximately 5 cm higher.



When folded



SPECIFICATIONS (ASISTA II)

ARM LENGTH	HOLDER FOR HAND DRYER	
	WITHOUT	WITH
SHORT (S)	SR-AS2SN	SR-AS2SD
MEDIUM (M)	SR-AS2MN	SR-AS2MD
LONG (L)	SR-AS2LN	SR-AS2LD

*The arm length is selected according to the model of the chair top.
*Combination with some of the electric chair bases, such as SP-PBN, is not available.
*ASISTA II can be installed on Takara Belmont styling chair only.

MN02 WAGON

Simple stainless steel trolley with two tiers.

SR-MN02
W520×D300×H830mm
FRAME: STAINLESS
DEPTH OF
TWO TRAYS: 25mm



MN03 WAGON

Stainless steel trolley with three tiers and top with anti-drop frame.

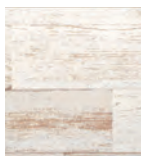
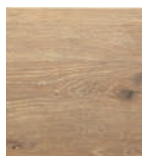
SR-MN03
W455×D300×H860mm
FRAME: STAINLESS
DEPTH OF
THREE TRAYS: NIL



THEIA WAGON

Match with THEIA furniture for a thoroughly coordinated hairdressing trolley with three wood veneer options to suit your style.

SR-WA3AMNN
W520×D382×H905mm
SIDE PANEL COLOUR:
NATURAL BROWN [MN]
*Three trays are removable.



D-GALLEY A/D-GALLEY S



Holders for two hair colour cups and a hand dryer.
*Hand dryer and hair colour cups are not included.



Hand mirror holder
*Hand mirror is not included.



Drawer (SR-DGS only)

ST STACKS N



Rubber moulding that will not injure the hands.

THEIA WAGON



Hand mirror holder
*Hand mirror is not included.
*Picture shows white side panel.

COLOUR (THEIA WAGON)

● WHITE [MW]

● NATURAL BROWN [MN]

LIBRO

A perfect companion for your client as they relax during treatment and hairdressing services.

SR-RW
W675×D357×H947mm
MAGAZINE HOLDER:
LINDEN (URETHANE COATING)
FRAME / SERVICE TABLE:
STEEL (POWDER COATING)
CASTER: URETHANE



FEATURES (LIBRO)



Magazine holder that can be adjusted to any angle according to the client's height and preference.



Includes a rack that can easily hold magazines.



Service table for placing personal items such as mobile phone and glasses.



Stackable and enables space-saving storage.

UPHOLSTERY & CUSTOMISATION

VINYL FABRICS

Available in a wide variety of colours and textures to meet your needs, our fabrics are durable, stain resistant and easy to clean.

ES

Antimicrobial*¹ and alcohol-resistant*² leather-look vinyl with a gentle texture and a wide range of colours.

*¹ Our upholstery fabrics are tested for antimicrobial resistance against Staphylococcus aureus and Escherichia coli in accordance with JIS Z 2801: 2010 'Antimicrobial test methods and antimicrobial efficacy'.

*² Fabrics are tested for resistance to alcohol based on Japanese Industrial Standards (JIS).



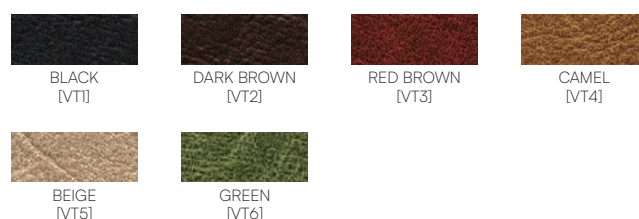
FS

This fabric-like series is appreciated for its impressively high quality and rustic texture.



VT

The colour shades are reminiscent of genuine vintage with the authentic texture of used leather.



URETHANE FABRICS

Soft and supple with a texture closer to genuine, natural leather, this fabric is highly flexible and suitable for high-end finishes, such as gathering.

SH

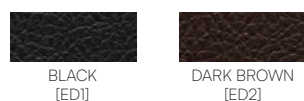
Characterised by a texture similar to genuine leather.

A standard series with high elasticity and flexibility in a wide range of colours.



ED

A thicker, soft-to-touch texture with a pleasant feel.



ST

ST has a delicate, gentle grain and subtle colouring that blends in well in more informal spaces.

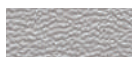


CN

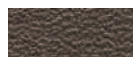
Elegant pearlescent and silver shades project a glamorous and sophisticated ambience.



PEARL BEIGE
[CN21]



PEARL SILVER
[CN22]



TITANIUM SILVER
[CN25]

NL

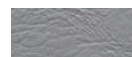
Standard leather-textured vinyl with bolder colours and a more rustic grain.



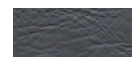
WHITE
[NL1]



IVORY
[NL2]



LIGHT GREY
[NL3]



CHARCOAL GREY
[NL4]



BLACK
[NL5]



RED
[NL6]



LIGHT BROWN
[NL8]



OLIVE
[NL10]



MARRON BROWN
[NL11]



BROWN
[NL12]



DARK BROWN
[NL24]



MOCHA BROWN
[NL25]

UPHOLSTERY & CUSTOMISATION

[illegible][illegible]

● STANDARD RANGE ●● ALTERNATIVE RANGE

*OTHER COLOURS IN SAME VINYL FABRICS

**TWO-TONE ONLY

Note: Available colours and prices may vary in each countries/regions.

For FS, please note that the orientation of the leather pattern cannot be standardised in all parts of each product.

