

# PASSPORT

  
Maletti





Maletti e il futuro del beauty design.

*Maletti and the future of beauty design.*

In tutti i processi creativi si comunica con un'idea, ma la forza è quella di continuare a mettersi in discussione, magari rivedendo radicalmente quello che si era pensato all'inizio, per trovare una strada nuova. Senza passione è molto difficile costruire una grande storia. La passione è quella che ha spinto Maletti Group ad esplorare tutti i luoghi del design costruendo una storia che accoglie ogni idea del beauty-world. E la passione è il collante tra passato e futuro dove anche le collezioni "abbandonate" restano nella nostra memoria, nel quotidiano dei nostri uffici, nell'archivio dei nostri tecnici, pronte ad essere riprodotte perchè sempre attuali, magari aggiornate nella tecnologia, per cui Maletti Group ha sempre avuto un occhio di riguardo.

*In all creative processes you communicate with an idea, but the strength is to keep questioning yourself, perhaps radically revising what you thought at the beginning, to find a new way.*

*Without passion it is very difficult to build a great story. Passion is what drove Maletti Group to explore all the places of design, building a story that welcomes every idea of the beauty-world.*

*And passion is the glue between past and future, where even the "abandoned" collections remain in our memory, in the daily life of our offices, in the archives of our technicians, ready to be reproduced because they are always current, perhaps updated in technology, for which Maletti Group has always had a special attention.*

“passione per  
il Design: la  
nostra visione  
del futuro”

*“passion for Design: our vision for the future”*



**Vieni a visitare  
i nostri showroom.**

VISIT OUR SHOWROOM.

3000mq a tua disposizione per toccare con mano i nostri prodotti made in Italy. Fascino e raffinatezza del design italiano dove prendono forma la qualità e l'eccellenza artigianale garantita dalla tradizione storica Maletti.

*3000 square metres at your disposal to touch with your hand the quality of our products and our selection materials. A charming and sophisticated space of Italian design where the quality and artisan excellence guaranteed by Maletti's historic tradition take shape.*

NEW

# SHIROBODY

by Maletti Creative Team

**Lettino multifunzionale** progettato per soddisfare le esigenze di parrucchieri ed estetisti.

**Multifunctional bed** designed to meet the needs of hairdressers and cosmeticians.

3

2

1

1. SHIROBODY | multifunctional bed

2. ALOE SHORT | styling chair

3. KIWI (by Nilo) | styling chair



PROVA LA NOSTRA  
REALTÀ AUMENTATA  
TRY OUR AUGMENTED  
REALITY

NEW

# BARRIQUE

collection Eco Green by Elisa Giovannoni



- 1. BARRIQUE | styling chair
- 2. ECO ATELIER | styling unit
- 3. ECO GREEN STAR CLASS | wash unit



PROVA LA NOSTRA  
REALTÀ AUMENTATA  
TRY OUR AUGMENTED  
REALITY

“L'esclusivo lavaggio per il trattamento Shirodara.”

“The exclusive wash unit for Shirodara treatment.”

NEW



# HEAVEN

Design by Elisa Giovannoni

- 1. ALOE SHORT | stool
- 2. HEAVEN | wash unit
- 3. VAPOMIST 1 NEW | steam system

- 4. BARRIQUE | styling chair
- 5. ECO ATELIER | styling unit



PROVA LA NOSTRA  
REALTÀ AUMENTATA  
TRY OUR AUGMENTED  
REALITY



# Rue Montenapoleone

collection by Elisa Giovannoni

- 1. MUsETTE | styling chair
- 2. RUE MONTENAPOLEONE SOLE WALL 2P | styling unit
- 3. RUE MONTENAPOLEONE TROLLEY | trolley
- 4. RUE MONTENAPOLEONE FIORE WALL | styling unit
- 5. SARAH (BY SARAH LAVOINE) | styling chair
- 6. MIMÌ | styling chair
- 7. VENEZIA | styling unit
- 8. RUE MONTENAPOLEONE BOX | chest of drawers





1. RUE MONTENAPOLEONE SOLE CENTRALE 2P | styling unit

2. EUFEMIA | styling chair



3. RUE MONTENAPOLEONE FIORE CENTRALE 2P | styling unit

4. MIMI | styling chair

5. SARAH (BY SARAH LAVOINE) | styling chair



1. EUFEMIA | styling chair
2. RUE MONTENAPOLEONE  
FIORE CENTRALE 2P | styling unit
3. RUE MONTENAPOLEONE  
FIORE WALL | styling unit
4. SARAH (BY SARAH LAVOINE) | styling chair
5. GONDOLA | wash unit
6. SOLE | mirror
7. MUSETTE | styling chair
8. RUE MONTENAPOLEONE | trolley

# ECO GREEN FIRST

collection by Giovannoni Design

Eco Green Hug Rec. ed Eco Green Star Class sono certificati  
Eco Green Hug Rec. and Eco Green Star Class are certified



- 1. ECO ATELIER | styling unit
- 2. ECO GREEN HUG | styling chair
- 3. ECO GREEN STAR CLASS | wash unit
- 4. ECO GREEN HUG REC. | styling chair
- 5. HUB | wash unit
- 6. VENEZIA | styling unit



# MINIMAL

collection by Elisa Giovannoni

- 1. MINIMAL OBLÒ CENTRALE 2P | styling unit
- 2. MANHATTAN TROLLEY | trolley
- 3. ECO GREEN FIRST | styling chair
- 4. LAZZARO | wash unit



# OLD SMOKE

collection by Elisa Giovannoni

- 1. LORD WELLINGTON | styling chair
- 2. OVAL | styling chair
- 3. LORD NELSON | wash unit



- 1. LORD NELSON | wash unit
- 2. LORD WELLINGTON | styling chair
- 3. OVAL | styling unit

# ECO FUN

collection by Christophe Pillet

TIMELESS DESIGN  
Ergonomic  
Eco-friendly  
Easy to clean  
Easy to assemble  
Easy to disassemble  
Easy to transport  
Easy to store

NATURAL COLOURS

1

2

3

- 1. ECO FUN | wash unit
- 2. ECO FUN | styling chair
- 3. MINIMAL QUADRA WHITE | styling unit

# MAISON SARAH LAVOINE

collection by Sarah Lavoine

1. SARAH TABLE PLUS CENTRALE 4P | technical table

2. SARAH | styling chair

3. NOA COIFFEUSE | styling unit

4. SARAH TROLLEY | trolley

5. SARAH TABOURET | stool

6. SARAH | wash unit

7. TT | footrest





1. SARAH | wash unit



- 1. NOA COIFFEUSE | styling unit
- 2. TT | footrest
- 3. NOA PLUS | styling chair



- 1. SARAH TROLLEY | trolley
- 2. SARAH MIROIR | styling unit
- 3. SARAH | styling chair
- 4. NOA | wash unit



NEW

**DIVINA ARMCHAIR**

Design Elisa Giovannoni  
 ↑ 104 cm ↗ 67 cm → 55 cm

**DIVINA ARMCHAIR**

collection by Elisa Giovannoni

OPZIONI COLORI E LEGNI  
 WOOD AND COLOR OPTIONS  
 pg. 108/111



NEW



**HUB**

Design Giovannoni Design - Rossano Ferretti  
 ↑ 104 cm ↗ 67 cm → 55 cm

**HUB** *Hair Up Beauty*  
 collection by Giovannoni Design

**OPZIONI COLORI E LEGNI**  
 WOOD AND COLOR OPTIONS  
 pg. 108/111



**HUB, HAIR UP BEAUTY SYSTEM**

HUB - HairUpBeauty è il nuovo lavatesta di Maletti Group che effettua il lavaggio dei capelli ovunque, perchè è dotato di sistema termico e idrico integrato con doppia pompa per la miscelazione dell'acqua pulita e di una pompa maceratore per lo scarico; è collegato elettricamente. Ha due vani laterali porta oggetti e uno centrale per accedere facilmente al serbatoio dell'acqua. HUB è dotato di quattro ruote piroettanti, di cui due frenanti, per essere facilmente trasportato su ogni tipologia di pavimentazione (anche moquette).

**HUB, HAIR UP BEAUTY SYSTEM**

*HUB - HairUpBeauty is the new Maletti Group wash unit that allows hair washing anywhere, as it is equipped with an integrated heating system and water system with a double pump for mixing clean water, and a macerator pump for draining; is electrically connected. It has two storage compartments and a central one for easy access to the water tank. HUB is equipped with four swiveling wheels, two of which are braking, to be easily carried on any type of flooring (including carpet).*

# Lavatesta multifunzione

Multifunctional Wash Unit



SALVACOLLO DEDICATO  
DEDICATED NECKREST



FORO VISO  
FACE HOLE



CROMOTERAPIA  
CROMOTHERAPY



DOPPIO SCARICO ACQUA E OLIO  
DOUBLE WATER AND OIL DRAINAGE

NEW

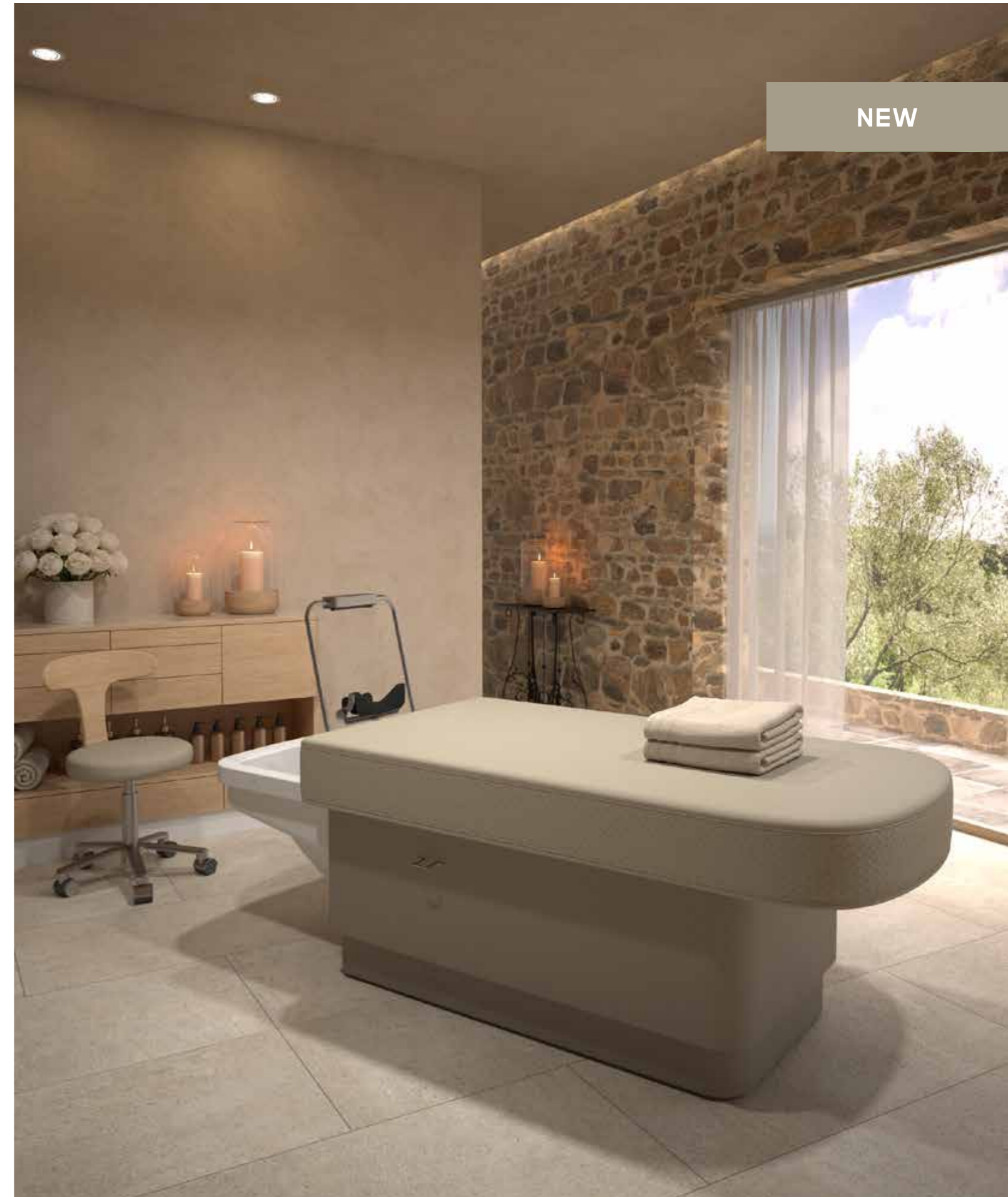
## SHIROBODY

Design Maletti Creative Team  
1 65-85 cm ↗ 78 cm → 198 cm

# SHIROBODY

collection by Maletti Creative Team

OPZIONI COLORI E LEGNI  
WOOD AND COLOR OPTIONS  
pg. 108/111



NEW



NEW



# Lavatesta

Wash Units

# Lavatesta completamente estendibili

Fully extendable Wash Units



BLACK



BEIGE



MOKKA

NEW

## HEAVEN

Design Elisa Giovannoni  
↑ 93-100 cm ↗ 75 cm → 162-209 cm  
Comfort | Air Massage

# HEAVEN

Design by Elisa Giovannoni

OPZIONI COLORI E LEGNI  
WOOD AND COLOR OPTIONS  
pg. 108/111





# Lavatesta e Sistema Vapore

Wash Units and Steam System



**ECO GREEN STAR CLASS**  
**ECO COLLECTION** Design Elisa Giovannoni  
 † 97 cm † 126-183 cm → 73 cm  
 (Air Massage) | (Air Massage bicolor) | (Comfort) | (Comfort bicolor)



**EDEN**  
 Design Elisa Giovannoni  
 † 118 cm † 75 cm → 133-181 cm  
 (Air Massage) | (Air Massage Plus) | (Comfort) | (Comfort Plus)



**ALU WASH STAND**  
**ALU GREEN COLLECTION** Design Elisa Giovannoni  
 † 97 cm † 135 cm → 77 cm  
 (Air Massage) | (Comfort)



**GREEN STAR CLASS**  
**GREEN FIRST COLLECTION** Design Giovannoni Design  
 † 97 cm † 126-183 cm → 73 cm  
 (Air Massage) | (Comfort)



**LORD NELSON**  
**OLD SMOKE COLLECTION** Design Elisa Giovannoni  
 † 97 cm † 135 cm → 86 cm  
 (Air Massage) | (Comfort)

**OPZIONI COLORI E LEGNI**  
 WOOD AND COLOR OPTIONS  
 pg. 108/111



**ECO UP & DOWN**  
**ECO COLLECTION** Design Maletti Creative Team  
 † 95-119 cm † 129-160 cm → 67 cm  
 (Air Massage) | (Air Massage bicolor) | (Comfort) | (Comfort bicolor)



**OPZIONI COLORI E LEGNI**  
 WOOD AND COLOR OPTIONS  
 pg. 108/111



**NOA**

**MAISON SARAH LAVOINE COLLECTION** Design Sarah Lavoine  
 † 98,5 cm † 122-158 cm → 74 cm  
 (Air Massage) | (Air Massage bicolor) | (Comfort) | (Comfort bicolor)



**SARAH**

**MAISON SARAH LAVOINE COLLECTION** Design Sarah Lavoine  
 † 102 cm † 125 cm → 72 cm  
 (Fix) | (Bicolor)



**ZEN**

Design Maletti Creative Team  
 † 97 cm † 132 cm → 75 cm  
 (Air Massage) | (Comfort)



**OREGON**

Design Maletti Creative Team  
 † 97 cm † 127,5-165 cm → 70 cm  
 (Air Massage) | (Massage) | (Comfort) | (Plus) | (Fix)



**NEW 330 SWING**

Design Maletti Creative Team  
 † 95 cm † 124-160 cm → 69 cm  
 (Air Massage) | (Comfort) | (Fix)



**UP & DOWN / UP & DOWN HANDY**

Design Maletti Creative Team  
 † 95-119 cm † 129-160 cm → 67 cm  
 (Air Massage) | (Comfort)



**SKYWASH PRIMA CLASSE**

Design Maletti Creative Team  
 † 104 cm † 126-174 cm → 68 cm  
 (Comfort) | (Air Massage) | (Fix)



**LADY ECO FUN**

**ECO FUN COLLECTION** Design Christophe Pillet  
 † 95 cm † 117 cm → 63 cm  
 (Bicolor)



Wash



**OPZIONI COLORI E LEGNI**  
 WOOD AND COLOR OPTIONS  
 pg. 108/111

# ANALISI E BENEFICI DEL SISTEMA VAPORE

SUI CAPELLI

## E TRATTAMENTO SHIRODARA

ANALYSIS AND BENEFITS OF STEAM SYSTEM ON HAIR & SHIRODARA TREATMENT



NEW

### VAPOMIST 1 NEW

Design Giovannoni Design

↑ 62 cm ↗ 26 cm → 35 cm



### VAPOMIST 2.0

Design Maletti Creative Team

↑ 62 cm ↗ 21 cm → 45 cm



NEW

### IGLOO SHIRODARA

Design Maletti Creative Team

↑ 53 cm ↗ 58 cm → 63 cm



### IGLOO

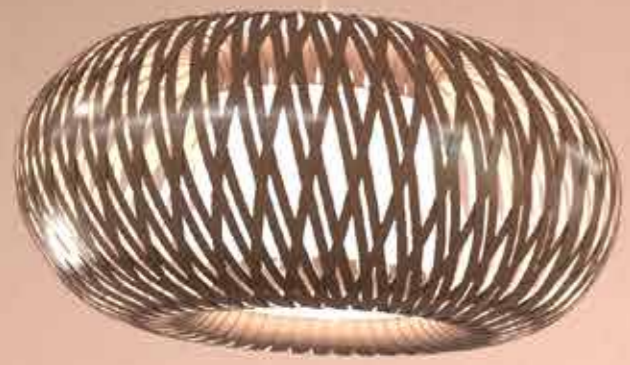
Design Maletti Creative Team

↑ 26 cm ↗ 56 cm → 60 cm



*Analisi e Studi in collaborazione con il Dipartimento di Medicina e Chirurgia di Perugia*





# Poltrone

Styling Chairs





NEW

**BARRIQUE**  
ECO GREEN COLLECTION  
Design Elisa Giovannoni  
↑ 85-99 cm ↗ 62 cm → 61 cm



**ECO GREEN FUN**  
ECO FUN COLLECTION  
Design Christophe Pillet  
↑ 85-96 cm ↗ 62 cm → 63 cm  
optional (Bicolor)



**ECO FUN CHAIR**  
ECO FUN COLLECTION  
Design Christophe Pillet  
↑ 85-96 cm ↗ 62 cm → 63 cm  
optional (Bicolor)



**TULIPA**  
Design Maletti Creative Team  
↑ 80-91 cm ↗ 61 cm → 67 cm



**STRIPTEASE**  
Design Maletti Creative Team  
↑ 79-90 cm ↗ 60 cm → 65 cm



**ECO GREEN HUG**  
ECO GREEN COLLECTION  
Design Giovannoni Design  
↑ 79-90 cm ↗ 61 cm → 61 cm  
optional (Bicolor)



**ECO GREEN HUG REC.**  
ECO GREEN COLLECTION  
Design Giovannoni Design  
↑ 79-90 cm ↗ 61 cm → 61 cm  
optional (Bicolor)



**GREEN HUG | GREEN HUG SOFT\***  
GREEN FIRST COLLECTION  
Design Giovannoni Design  
↑ 79-90 cm ↗ 61 cm → 61 cm  
(Soft)



**BOOMERANG SOFT**  
GREEN FIRST COLLECTION  
Design Giovannoni Design  
↑ 81 cm ↗ 59 cm → 59,5 cm



**ANGELINA**  
JUST COLLECTION  
Design Matta e Varaschin  
↑ 79-90 cm ↗ 60 cm → 66 cm



**ANGELINA REC.**  
JUST COLLECTION  
Design Matta e Varaschin  
↑ 83-94 cm ↗ 70 cm → 70 cm

OPZIONI COLORI E LEGNI  
WOOD AND COLOR OPTIONS  
pg. 108/111

OPZIONI COLORI E LEGNI  
WOOD AND COLOR OPTIONS  
pg. 108/111



**NOA EASY**  
**MAISON SARAH LAVOINE COLLECTION**  
 Design Sarah Lavoine  
 † 89-100 cm † 67 cm → 65 cm



**NOA PLUS**  
**MAISON SARAH LAVOINE COLLECTION**  
 Design Sarah Lavoine  
 † 89-100 cm † 67 cm → 65 cm  
 optional contrast piping



**MODERN**  
**MODERN COLLECTION**  
 Design Philippe Starck  
 † 84-95 cm † 55 cm → 60 cm



**SARAH**  
**MAISON SARAH LAVOINE COLLECTION**  
 Design Sarah Lavoine  
 † 82-96 cm † 70 cm → 68 cm  
 optional (Bicolor)



**LORD WELLINGTON**  
**OLD SMOKE COLLECTION**  
 Design Elisa Giovannoni  
 † 80 cm † 64 cm → 61 cm



**LA PIÙ BELLA DEL REAME**  
**BOHÈME COLLECTION**  
 Design Elisa Giovannoni  
 † 86,5 cm † 65 cm → 71,4 cm  
 (Structure Gold / Silver)



**MIMÌ**  
**BOHÈME COLLECTION**  
 Design Elisa Giovannoni  
 † 80-96 cm † 63 cm → 66,5 cm  
 optional (not Quilted)



**EUFEMIA**  
**BOHÈME COLLECTION**  
 Design Elisa Giovannoni  
 † 80-96 cm † 46 cm → 70 cm  
 optional (Bicolor)



**EUFEMIA SHELL**  
**BOHÈME COLLECTION**  
 Design Elisa Giovannoni  
 † 80-96 cm † 46 cm → 70 cm  
 optional (Bicolor)



**MUSETTE REC.**  
**BOHÈME COLLECTION**  
 Design Elisa Giovannoni  
 † 84-100 cm † 68-84 cm → 68 cm  
 optional contrast piping



**MUSETTE**  
**BOHÈME COLLECTION**  
 Design Elisa Giovannoni  
 † 80-96 cm † 46 cm → 69 cm  
 optional contrast piping



**PLEXI**  
 Design Maletti Creative Team  
 † 86-97 cm † 59 cm → 64 cm

**OPZIONI COLORI E LEGNI**  
 WOOD AND COLOR OPTIONS  
 pg. 108/111

**OPZIONI COLORI E LEGNI**  
 WOOD AND COLOR OPTIONS  
 pg. 108/111

# Sgabelli

Trolleys

# Basi

Bases



### SGABI / SIENA COLOR

Design Maletti Creative Team  
 ↑ 80-92 cm ↗ 62 cm → 66 cm

Regular: ruote nere | *black wheels*  
 Optional: ruote Speedy | *Speedy wheels*



### AFTER TOMORROW

Design Maletti Creative Team  
 ↑ 52-70 cm ↗ 38,5 cm → 41 cm

Regular: ruote nere | *black wheels*  
 Optional: ruote Speedy | *Speedy wheels*



### YOU A LITTLE TALK COLLECTION

Design Didier Gomez  
 ↑ 65-90 cm ↗ 29 cm → 33 cm

Regular: ruote nere | *black wheels*  
 Optional: ruote Speedy | *Speedy wheels*



### SARAH TABOURET

#### MAISON SARAH LAVOINE COLLECTION

Design Sarah Lavoine  
 ↑ 56-69 cm ↗ 38 cm → 34 cm

Regular: ruote nere | *black wheels*  
 Optional: ruote Speedy | *Speedy wheels*



### MADRE STOOL

Design Maletti Creative Team  
 ↑ 44,5-57,5 cm ↗ 39 cm → 59 cm



### ALOE SHORT

#### BOHÈME COLLECTION

Design Elisa Giovannoni  
 ↑ 45-58 cm ↗ 40 cm → 54 cm

Regular: ruote nere | *black wheels*



RUOTE SPEEDY | *SPEEDY WHEELS*



RUOTE NERE | *BLACK WHEELS*

OPZIONI COLORI E LEGNI  
 WOOD AND COLOR OPTIONS  
 pg. 108/111

NEW  
BASE CEP



↑ 37-51 cm ↗ 48 cm → 48 cm  
 (Rovere Scuro | Dark Oak)



(Rovere Chiaro | Light Oak)

PASSE-PARTOUT



↑ 37-51 cm ↗ 46 cm → 46 cm

SOAURE HUG



↑ 34-45 cm ↗ 46 cm → 46 cm

OPERA



↑ 37-51 cm ↗ 48 cm → 48 cm  
 (Black)



(Gold-Black)



(Gold-White)



(Silver)

SARAH BASE



↑ 37-51 cm ↗ 52 cm → 52 cm  
 (Black)



(Gold-Black)



(Gold-White)



(White)

MARE BLOCK



↑ 34-45 cm ↗ 50 cm → 50 cm  
 (Black)



(Silver)



(Gold)

TERRA BLOCK SATIN



↑ 34-45 cm ↗ 48 cm → 48 cm

MODERN



↑ 34-45 cm ↗ 48 cm → 48 cm

LUNA BLOCK



↑ 37-48 cm ↗ 60 cm → 60 cm



(Nera opaca | Black matt)

NEW

# Poltrone uomo

Barber Chairs





FATTI UNA SIGNORA BARBA!



NEW



GET A DREAMY BEARD!

NEW  
STEAMON  
Design Elisa Giovannoni  
1 62 cm x 26 cm → 35 cm

STEAMON  
BARBER EXPERIENCE



Analisi e Studi in collaborazione con il Dipartimento di Medicina e Chirurgia di Perugia

NEW

**ZERBINI TOTAL BLACK**

Design Josh Lamonaca  
↑ 110 cm ↗ 120 cm → 72 cm



**ZERBINI 1906  
BOHÈME COLLECTION**

Design Elisa Giovannoni  
↑ 110 cm ↗ 120 cm → 72 cm  
Frame Structure  
White | Black



**ZERBINI 1906 CAPITONNÉ  
BOHÈME COLLECTION**

Design Elisa Giovannoni  
↑ 110 cm ↗ 120 cm → 72 cm  
Frame Structure  
White | Black

**OPZIONI COLORI E LEGNI**  
WOOD AND COLOR OPTIONS  
pg. 108/111



1

2

**1. MINIMAL QUADRA BASIN** | styling unit with basin

**2. ZERBINI 1906** | barber chair

**Mensole**  
Styling Units





**RUE MONTENAPOLEONE SOLE WALL**  
MONTENAPOLEONE COLLECTION

Design Elisa Giovannoni  
↑ 174 cm ↗ 33 cm → 130 cm  
(Consolle) | (Mirror)

Optional:  
- Led



**RUE MONTENAPOLEONE SOLE WALL 2P**  
MONTENAPOLEONE COLLECTION

Design Elisa Giovannoni  
↑ 174 cm ↗ 33 cm → 230 cm  
(Consolle) | (Mirror)

Optional:  
- Led



**RUE MONTENAPOLEONE FIORE WALL**  
MONTENAPOLEONE COLLECTION

Design Elisa Giovannoni  
↑ 184 cm ↗ 33 cm → 130 cm  
(Consolle) | (Mirror)

Optional:  
- Led



**RUE MONTENAPOLEONE FIORE WALL 2P**  
MONTENAPOLEONE COLLECTION

Design Elisa Giovannoni  
↑ 184 cm ↗ 33 cm → 230 cm  
(Consolle) | (Mirror)

Optional:  
- Led

STANDARD  
STRUCTURE



STANDARD  
SHELF TOP



SU RICHIESTA | UPON REQUEST  
SHELF TOP



STANDARD  
STRUCTURE



STANDARD  
SHELF TOP



SU RICHIESTA | UPON REQUEST  
SHELF TOP





**RUE MONTENAPOLEONE SOLE CENTRALE 2P**

**MONTENAPOLEONE COLLECTION**  
 Design Elisa Giovannoni  
 ↑ 174 cm ↗ 70 cm → 130 cm  
 (Consolle) | (Mirror)

Optional:  
 - specchio | *mirror*



**RUE MONTENAPOLEONE FIORE CENTRALE 2P**

**MONTENAPOLEONE COLLECTION**  
 Design Elisa Giovannoni  
 ↑ 184 cm ↗ 70 cm → 130 cm  
 (Consolle) | (Mirror)

Optional:  
 - specchio | *mirror*



**RUE MONTENAPOLEONE SOLE CENTRALE 4P**

**MONTENAPOLEONE COLLECTION**  
 Design Elisa Giovannoni  
 ↑ 174 cm ↗ 70 cm → 250 cm  
 (Consolle) | (Mirror)

Optional:  
 - specchio | *mirror*



**RUE MONTENAPOLEONE FIORE CENTRALE 4P**

**MONTENAPOLEONE COLLECTION**  
 Design Elisa Giovannoni  
 ↑ 184 cm ↗ 70 cm → 250 cm  
 (Consolle) | (Mirror)

Optional:  
 - specchio | *mirror*

STANDARD  
STRUCTURE



STANDARD  
SHELF TOP



SU RICHIESTA | UPON REQUEST  
SHELF TOP



STANDARD  
STRUCTURE



STANDARD  
SHELF TOP



SU RICHIESTA | UPON REQUEST  
SHELF TOP





**NOA COIFFEUSE**  
**MAISON SARAH LAVOINE COLLECTION**  
 Design Sarah Lavoine  
 † 212 cm ↗ 32,5 cm → 85,5 cm



**SARAH MIROIR**  
**MAISON SARAH LAVOINE COLLECTION**  
 Design Sarah Lavoine  
 † 170 cm ↗ 23 cm → 112 cm  
 (matt gold)  
**FOOTREST SARAH**  
 (optional)



**SARAH MIROIR**  
**MAISON SARAH LAVOINE COLLECTION**  
 Design Sarah Lavoine  
 † 170 cm ↗ 23 cm → 112 cm  
 (black)  
**FOOTREST SARAH**  
 (optional)



**SARAH TABLE EASY CENTRALE 4P**  
**MAISON SARAH LAVOINE COLLECTION**  
 Design Sarah Lavoine  
 † 167,5 cm ↗ 79 cm → 220 cm



**SARAH TABLE EASY CENTRALE 2P**  
**MAISON SARAH LAVOINE COLLECTION**  
 Design Sarah Lavoine  
 † 167,5 cm ↗ 79 cm → 105 cm



**SARAH TABLE PLUS CENTRALE 4P**  
**MAISON SARAH LAVOINE COLLECTION**  
 Design Sarah Lavoine  
 † 167,5 cm ↗ 79 cm → 220 cm



**SARAH TABLE PLUS CENTRALE 2P**  
**MAISON SARAH LAVOINE COLLECTION**  
 Design Sarah Lavoine  
 † 167,5 cm ↗ 79 cm → 105 cm



**NEW**  
**VENEZIA WALL**  
**MONTENAPOLEONE COLLECTION**  
 Design Giovannoni Design  
 † 202 cm ↗ 50 cm → 140 cm



**VENEZIA**  
**MONTENAPOLEONE COLLECTION**  
 Design Giovannoni Design  
 † 202 cm ↗ 50 cm → 140 cm

**STANDARD  
 STRUCTURE**



**STANDARD  
 SHELF TOP**

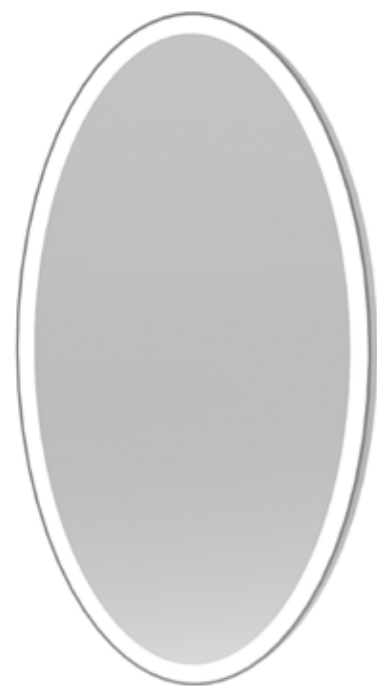


**SU RICHIESTA | UPON REQUEST  
 SHELF TOP**



**COLORE STRUTTURA  
 COLOR FRAME**





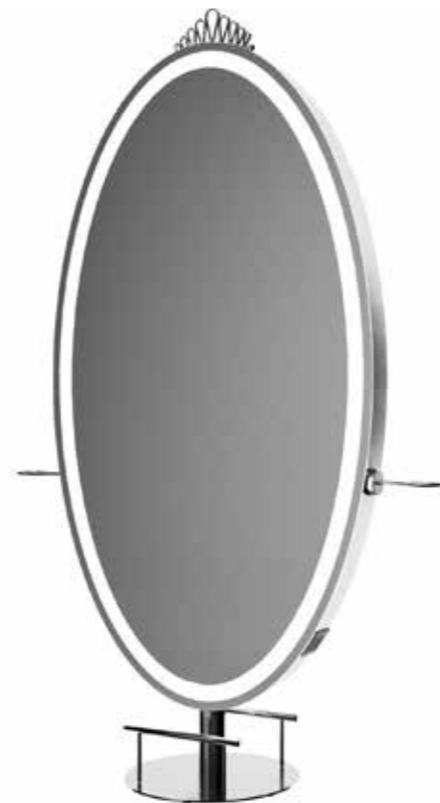
**GRIMHILDE SLIM**  
**BOHÈME COLLECTION**

Design Elisa Giovannoni  
↑ 180 cm ↗ 5 cm → 101 cm  
(Eco)



**GRIMHILDE PLUS**  
**BOHÈME COLLECTION**

Design Elisa Giovannoni  
↑ 206 cm ↗ 48 cm → 136 cm  
(Eco)



**GRIMHILDE PLUS WHIT FOOTREST**  
**BOHÈME COLLECTION**

Design Elisa Giovannoni  
↑ 206 cm ↗ 48 cm → 136 cm  
(Eco)



**ECLIPSE WALL**

Design Maletti Creative Team  
↑ 179 cm ↗ 28 cm → 74 cm



**ECLIPSE CENTRALE**

Design Maletti Creative Team  
↑ 197 cm ↗ 60 cm → 80 cm



**ECLIPSE CENTRALE WITH FOOTREST**

Design Maletti Creative Team  
↑ 197 cm ↗ 60 cm → 80 cm

**STANDARD**



**COLOR**



**ECO COLOR**



**COLORE STRUTTURA**  
**COLOR FRAME**







**ECO ATELIER**  
Design Elisa Giovannoni  
↑ 145 cm ↗ 31 cm → 143 cm



**OVAL**  
**OLD SMOKE COLLECTION**  
Design Elisa Giovannoni  
↑ 145 cm ↗ 31 cm → 143 cm

OPZIONI COLORI E LEGNI  
WOOD AND COLOR OPTIONS  
pg. 108/111



- 1. **OBLO'** | mirror
- 2. **GREEN HUG** | styling chair
- 3. **CONSOLE MINIMAL SINGLE** | styling units
- 4. **MINIMAL BOX** | styling units



**CONSOLE MINIMAL SINGLE**  
**MINIMAL COLLECTION**  
 Design Elisa Giovannoni  
 ↑ 80,5 cm ↗ 33 cm → 99 cm



**CONSOLE MINIMAL DOUBLE**  
**MINIMAL COLLECTION**  
 Design Elisa Giovannoni  
 ↑ 80,8 cm ↗ 33 cm → 220 cm



**MINIMAL BASIN OBLO'**  
**MINIMAL COLLECTION**  
 Design Elisa Giovannoni  
 ↑ 94,5 cm ↗ 48 cm → 136 cm  
**CONSOLE MINIMAL BASIN**  
 ↑ 80,5 cm ↗ 33 cm → 99 cm



**CONSOLE MINIMAL OBLO'**  
**MINIMAL COLLECTION**  
 Design Elisa Giovannoni  
 ↑ 80,5 cm ↗ 33 cm → 99 cm  
**MINIMAL BOX**  
 ↑ 57,5 cm ↗ 33 cm → 35 cm  
**OBLO'**  
 ↑ 95,4 cm ↗ 3,6 cm → 95,4 cm



**MINIMAL BOX**  
 Design Maletti Creative Team  
 ↑ 57,5 cm ↗ 33 cm → 35 cm



**MIRROR QUADRA**  
 (optional)

**STANDARD**



FERRO GREZZO  
 RAW IRON

**STRUTTURA | STRUCTURE OPTIONS**



BLACK

WHITE

GOLD

**OPZIONI COLORI E LEGNI**  
 WOOD AND COLOR OPTIONS  
 pg. 108/111

**STANDARD**



FERRO GREZZO  
 RAW IRON

**STRUTTURA | STRUCTURE OPTIONS**



BLACK

WHITE

GOLD

**OPZIONI COLORI E LEGNI**  
 WOOD AND COLOR OPTIONS  
 pg. 108/111



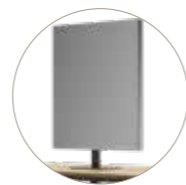
**MINIMAL CENTRALE 2P**  
**MINIMAL COLLECTION**  
 Design Elisa Giovannoni  
 † 80,8 cm † 60,5 cm → 100 cm



**MINIMAL OVALE CENTRALE 2P**  
**MINIMAL COLLECTION**  
 Design Elisa Giovannoni  
 † 80,8 cm † 60,5 cm → 100 cm  
**SPECCHIO OVALE IN APPOGGIO | REMOVABLE MIRROR OVAL**  
 † 83 cm † 17,5 cm → 50 cm  
 (optional)



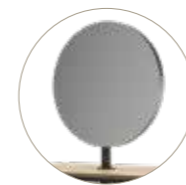
**SPECCHIO RIMOVIBILE ROUND**  
**MIRROR REMOVABLE ROUND**  
 (optional)



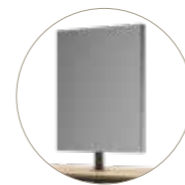
**SPECCHIO RIMOVIBILE SQUARE**  
**MIRROR REMOVABLE SQUARE**  
 (optional)



**MINIMAL OVALE CENTRALE 2P**  
**MINIMAL COLLECTION**  
 Design Elisa Giovannoni  
 † 80,8 cm † 60,5 cm → 100 cm  
**SPECCHIO OVALE FISSO | FIXED MIRROR OVAL**  
 † 83,5 cm † 11 cm → 55 cm  
 (optional)



**SPECCHIO ROUND**  
**MIRROR ROUND**  
 (optional)



**SPECCHIO SQUARE**  
**MIRROR SQUARE**  
 (optional)



**MINIMAL OVALE CENTRALE 2P**  
**MINIMAL COLLECTION**  
 Design Elisa Giovannoni  
 † 80,8 cm † 60,5 cm → 100 cm  
**SPECCHIO OVALE FISSO CON LED | FIXED MIRROR OVAL WITH LED**  
 † 83,5 cm † 11 cm → 55 cm  
 (optional)



**SPECCHIO ROUND CON LED**  
**MIRROR ROUND WITH LED**  
 (optional)



**SPECCHIO SQUARE CON LED**  
**MIRROR SQUARE WITH LED**  
 (optional)

**STANDARD**



FERRO GREZZO  
 RAW IRON

**STRUTTURA | STRUCTURE OPTIONS**



BLACK



WHITE



GOLD

**OPZIONI COLORI E LEGNI**  
**WOOD AND COLOR OPTIONS**  
 pg. 108/111

**STANDARD**



FERRO GREZZO  
 RAW IRON

**STRUTTURA | STRUCTURE OPTIONS**



BLACK



WHITE



GOLD

**OPZIONI COLORI E LEGNI**  
**WOOD AND COLOR OPTIONS**  
 pg. 108/111



**MINIMAL OVALE CENTRALE 4P**

**MINIMAL COLLECTION**

Design Elisa Giovannoni

↑ 80,5 cm ↗ 33 cm → 99 cm

**SPECCHIO OVALE IN APPOGGIO**

↑ 80,5 cm ↗ 33 cm → 99 cm

(optional)



**SPECCHIO RIMOVIBILE ROUND**  
MIRROR REMOVABLE ROUND  
(optional)



**SPECCHIO RIMOVIBILE SQUARE**  
MIRROR REMOVABLE SQUARE  
(optional)



**MINIMAL CENTRALE 4P**

**MINIMAL COLLECTION**

Design Elisa Giovannoni

↑ 80,5 cm ↗ 33 cm → 99 cm

**CONSOLLE MINIMAL SINGLE**

↑ 80,5 cm ↗ 33 cm → 99 cm

**MINIMAL BOX**

↑ 57,5 cm ↗ 33 cm → 35 cm

(optional)

**STANDARD**



FERRO GREZZO  
RAW IRON

**STRUTTURA | STRUCTURE OPTIONS**



BLACK



WHITE



GOLD

**OPZIONI COLORI E LEGNI**  
WOOD AND COLOR OPTIONS  
pg. 108/111



**MINIMAL CENTRALE 4P**

**MINIMAL COLLECTION**

Design Elisa Giovannoni

↑ 80,5 cm ↗ 33 cm → 99 cm

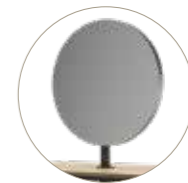
**SPECCHIO FISSO**

↑ 80,5 cm ↗ 33 cm → 99 cm

**MINIMAL BOX**

↑ 57,5 cm ↗ 33 cm → 35 cm

(optional)



**SPECCHIO ROUND**  
MIRROR ROUND  
(optional)



**SPECCHIO SQUARE**  
MIRROR SQUARE  
(optional)



**MINIMAL OVALE CENTRALE 4P**

**MINIMAL COLLECTION**

Design Elisa Giovannoni

↑ 80,5 cm ↗ 33 cm → 99 cm

**SPECCHIO FISSO CON LED**

↑ 80,5 cm ↗ 33 cm → 99 cm

(optional)



**SPECCHIO ROUND CON LED**  
MIRROR ROUND WITH LED  
(optional)



**SPECCHIO SQUARE CON LED**  
MIRROR SQUARE WITH LED  
(optional)

**STANDARD**



FERRO GREZZO  
RAW IRON

**STRUTTURA | STRUCTURE OPTIONS**



BLACK



WHITE



GOLD

**OPZIONI COLORI E LEGNI**  
WOOD AND COLOR OPTIONS  
pg. 108/111



**MARCELLO WALL SINGLE**  
BOHÈME COLLECTION  
Design Elisa Giovannoni  
↑ 180 cm ↗ 2,4 cm → 92 cm



**ACCADEMIA**  
Design Matta e Varaschin  
↑ 180 cm ↗ 51 cm → 94 cm



**COLLINE 4P**  
BOHÈME COLLECTION  
Design Elisa Giovannoni  
Ø 135 cm ↑ 80 cm



**MARCELLO**  
BOHÈME COLLECTION  
Design Elisa Giovannoni  
↑ 47,5 cm ↗ 14 cm → 35 cm



**MINIMAL MIRROR**  
MINIMAL COLLECTION  
Design Elisa Giovannoni  
↑ 47,5 cm ↗ 14 cm → 35 cm



**TT**  
Design Maletti Creative Team  
↑ 17,8 cm ↗ 21,4 cm → 36 cm  
(Silver)



**TT**  
Design Maletti Creative Team  
↑ 17,8 cm ↗ 21,4 cm → 36 cm  
(matt Gold)  
(a richiesta | up on request)



**TT**  
Design Maletti Creative Team  
↑ 17,8 cm ↗ 21,4 cm → 36 cm  
(Black)



**MADAME**  
Design Maletti Creative Team  
↑ 16,5 cm ↗ 22 cm → 36 cm



**FOOT DREAM**  
Design Ross Lovegrove  
↑ 17 cm ↗ 20 cm → 40 cm



**DROP**  
Design Maletti Creative Team  
↑ 17 cm ↗ 20 cm → 40 cm



**NOA REPOSE PIEDS**  
MAISON SARAH LAVOINE  
Design Sarah Lavoine  
↑ 38 cm ↗ 15 cm → 58 cm



**SARAH REPOSE PIEDS**  
MAISON SARAH LAVOINE  
Design Sarah Lavoine  
↑ 18 cm ↗ 28 cm → 60 cm

# Complementi di Arredo

Complementary Furniture



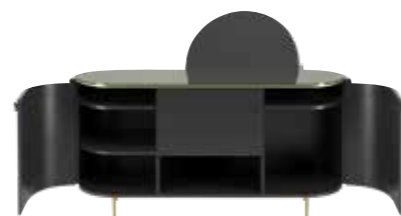


**RUE MONTNAPOLEONE RECEPTION**

**MONTNAPOLEONE COLLECTION**

Design Giovannoni Design

↑ 116,5 cm ↗ 56 cm → 161,5 cm



**OUVERTURE EASY**

**BOHÈME COLLECTION**

Design Elisa Giovannoni

↑ 110 cm ↗ 58 cm → 160 cm

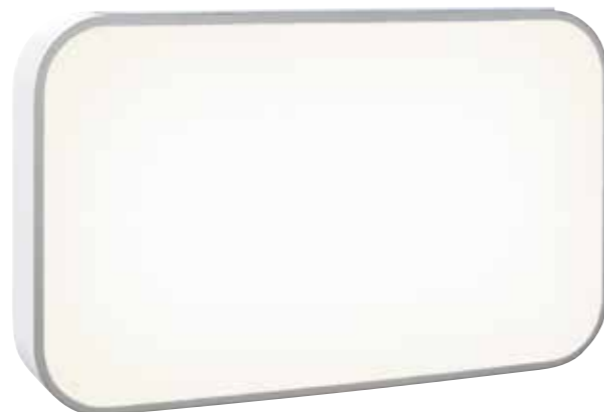


**ECO GREEN**

Design Maletti Creative Team

↑ 106 cm ↗ 67 cm → 176 cm

(Ivory/Black)



**SARAH EXPO 5P**

**MAISON SARAH LAVOINE COLLECTION**

Design Sarah Lavoine

↑ 210 cm ↗ 31,5 cm → 75 cm

Black | White shelves



**EXPO 5**

Design Maletti Creative Team  
↑ 210 cm ↗ 23,5 cm → 78 cm



**EXPO 3 | EXPO 2**

Design Maletti Creative Team  
↑ 130 cm ↗ 23,5 cm → 80 cm (Expo 3)  
↑ 73 cm ↗ 23,5 cm → 80 cm (Expo 2)



### EASY M. COMPLETE

Design Maletti Creative Team  
 ↑ 210 cm ↗ 40 cm → 360 cm



### CAFÈ MOMUS COMPLETE

BOHÈME COLLECTION  
 Design Elisa Giovannoni

- 1 CAFÈ MOMUS LISCIO**  
↑ 80 cm ↗ 44 cm → 80 cm
- 2 CAFÈ MOMUS BASIN**  
↑ 80 cm ↗ 44 cm → 80 cm
- 3 CAFÈ MOMUS EXPO 3**  
↑ 130 cm ↗ 24 cm → 80 cm
- 4 CAFÈ MOMUS ALVEOLAR**  
↑ 27 cm ↗ 20 cm → 76,5 cm
- 5 CAFÈ MOMUS RECYCLE**  
↑ 80 cm ↗ 44 cm → 80 cm
- 6 CAFÈ MOMUS CORNICE**  
(4P) | (3P)  
(2P) | (1P)



**4**  
 ESPOSITORE 5 RIPIANI  
 EXPO 5 SHELVES



**1**  
 MODULO LAVABO  
 LEFT WASH BASIN MODULE



**2**  
 MODULO LISCIO  
 SMOOTH MODULE



**5**  
 ESPOSITORE 3 RIPIANI  
 EXPO 3 SHELVES



**6**  
 ESPOSITORE ALVEOLARE  
 ALVEOLAR COLOR TUBES  
 DISPLAY



**3**  
 MODULO RICICLO  
 LEFT RECYCLING MODULE



**7**  
 MODULO PORTASCOPE  
 BROOM HOLDER MODULE

### EASY M. COMPONENTS

Design Maletti Creative Team

- 1 EASY M. BASIN**  
↑ 80 cm ↗ 40 cm → 80 cm
- 2 EASY M. CABINET**  
↑ 80 cm ↗ 40 cm → 80 cm
- 3 EASY M. RECYCLE**  
↑ 80 cm ↗ 40 cm → 80 cm
- 4 EXPO ECO 5**  
↑ 198 cm ↗ 23 cm → 80 cm
- 5 EXPO ECO 3**  
↑ 97 cm ↗ 23 cm → 80 cm
- 6 COLORBAR ALVEOLAR**  
↑ 27 cm ↗ 20 cm → 76 cm
- 7 EASY M. NOOK**  
↑ 198 cm ↗ 40 cm → 40 cm

OPZIONI COLORI E LEGNI  
 WOOD AND COLOR OPTIONS  
 pg. 108/111





### BARBER STATION

Design Maletti Creative Team  
 ↑ 200 cm ↗ 50 cm → 150 cm

**1 PANNELLO EXPO**  
 ↑ 109 cm ↗ 17 cm → 40 cm

**2 SALVAPIANO IN VETRO**  
 ↑ 1 cm ↗ 35 cm → 40 cm

**2A SALVAPIANO IN VETRO**  
 ↑ 1 cm ↗ 35 cm → 150 cm  
 (White) (Black)

**3 MOBILE A GIORNO**  
 ↑ 90 cm ↗ 35 cm → 40 cm

**4 MOBILE LAVABO**  
 ↑ 91 cm ↗ 50 cm → 70 cm  
 (Black/White)

**4A MOBILE LAVABO**  
 ↑ 91 cm ↗ 40 cm → 70 cm  
 (Steel)

**5 MOBILE CON CASSETTI**  
 ↑ 90 cm ↗ 35 cm → 40 cm

**6 GRUPPO SPECCHIERA**  
 ↑ 110 cm ↗ 3 cm → 70 cm

**7 CAPPELLO**  
 → 150 cm

**8 PANNELLO CON BOISERIE**  
 ↑ 109 cm ↗ 17 cm → 40 cm

OPZIONI COLORI E LEGNI  
 WOOD AND COLOR OPTIONS  
 pg. 108/111



**1**  
 PANNELLO EXPO  
 EXPO PANEL



**2**  
 SALVA PIANO IN VETRO  
 GLASS TOP FOR SURFACE  
 PROTECTION  
 ↑ 1 cm ↗ 35 cm → 40 cm  
 (White/Black)



**2A**  
 SALVA PIANO IN VETRO  
 GLASS TOP FOR SURFACE  
 PROTECTION  
 ↑ 1 cm ↗ 35 cm → 150 cm  
 (White/Black)



**3**  
 MOBILE A GIORNO  
 OPEN CABINET



**4**  
 MOBILE A LAVABO FISSO  
 FIX WASH BASIN CABINET  
 (White)



**4**  
 MOBILE A LAVABO FISSO  
 FIX WASH BASIN CABINET  
 (Black)



**4A**  
 MOBILE A LAVABO IN ACCIAIO  
 STEEL WASH BASIN CABINET



**5**  
 MOBILE CON CASSETTI  
 CABINET WITH DRAWERS



**6**  
 GRUPPO SPECCHIERA  
 MIRROR UNIT



**7**  
 CAPPELLO  
 UPPER FRAME



**8**  
 PANNELLO BOISERIE  
 WOOD PANEL WITH BOISERIE



**9**  
 FASCIA TAMPONE  
 BUFFER STRIP

OPZIONI COLORI E LEGNI  
 WOOD AND COLOR OPTIONS  
 pg. 108/111



**RUE MONTENAPOLEONE TROLLEY**  
**MONTENAPOLEONE COLLECTION**  
 Design Elisa Giovannoni  
 † 77 cm ↗ 38 cm → 38 cm



**RUE MONTENAPOLEONE BOX**  
**MONTENAPOLEONE COLLECTION**  
 Design Elisa Giovannoni  
 † 71 cm ↗ 38 cm → 38 cm



**SARAH TROLLEY**  
**MAISON SARAH LAVOINE COLLECTION**  
 Design Sarah Lavoine  
 † 77 cm ↗ 38 cm → 38 cm



**SARAH TIROIR**  
**MAISON SARAH LAVOINE COLLECTION**  
 Design Sarah Lavoine  
 † 71 cm ↗ 38 cm → 38 cm



**JUST COLOR**  
 Design Elisa Giovannoni  
 † 88 cm ↗ 30 cm → 58 cm (Open)  
 † 106 cm ↗ 16 cm → 30 cm (Closed)



**MANHATTAN**  
**A LITTLE TALK COLLECTION**  
 Design Didier Gomez  
 † 86,5 cm ↗ 43 cm → 35 cm (White/Black)



**GREAT**  
 Design Maletti Creative Team  
 † 85 cm ↗ 40 cm → 40 cm



**URBAN**  
 Design Maletti Creative Team  
 † 80,9 cm ↗ 41 cm → 41-63 cm



**MINIMAL TROLLEY**  
 Design by Elisa Giovannoni  
 † 63,5 cm ↗ 33 cm → 35 cm

**STRUTTURA | STRUCTURE OPTIONS**



**STANDARD**



**STRUTTURA | STRUCTURE OPTIONS**



**OPZIONI COLORI E LEGNI**  
 WOOD AND COLOR OPTIONS  
 pg. 108/111



**CASKO WALL**

Design Maletti Creative Team  
↑ 135-240 cm ↗ 164-170 cm → 56 cm



**HAIR STATION WALL**

Design Maletti Creative Team  
↑ 135-240 cm ↗ 164-170 cm → 56 cm  
Silver/Black



**HAIR MASTER WALL**

Design Olymp  
↑ 35 cm ↗ 34 cm → 66 cm  
White | Black | Silver



**NARCISO**

Design Maletti Creative Team  
↑ 79-126 cm ↗ 46 cm → 127 cm  
optional: display con illuminazione | display with lighting  
optional: aspiratore di polvere | nail dust collector



**SPRING**

Design Maletti Creative Team  
↑ 174 cm ↗ 40 cm → 130 cm



**CASKO**

Design Maletti Creative Team  
↑ 136-168 cm ↗ 70 cm → 56 cm



**HAIR STATION**

Design Maletti Creative Team  
↑ 136-168 cm ↗ 70 cm → 56 cm  
(Silver/Black)



**HAIR MASTER**

Design Olymp  
(White/Black/Silver)



**AKSA BEACH**

Design Maletti Creative Team  
↑ 79,6 cm ↗ 46,3 cm → 130 cm  
optional: display con illuminazione | display with lighting  
optional: aspiratore di polvere | nail dust collector



**SMART NAILS**

Design Maletti Creative Team  
↑ 81 cm ↗ 120 cm → 45 cm  
Optional: supporto lampada UV e cuscino mani  
holders for UV lamp and hands pillow  
(White)

**OPZIONI COLORI E LEGNI**  
WOOD AND COLOR OPTIONS  
pg. 108/111

# L'estetica dei materiali COLOR TREND GUIDE 2025

*The aesthetics of materials COLOR TREND GUIDE 2025*

Da sempre Maletti si distingue per la cura nella realizzazione dei materiali utilizzati collaborando con i migliori centri di ricerca. Grande importanza hanno anche i colori per la cui scelta si seguono i trend di mercato. Se state pianificando di realizzare un nuovo salone, queste pagine vi offriranno gli spunti per renderlo sostenibile.

*Maletti has always stood out for the care taken in the materials used, collaborating with the best research centres. Great importance is also given to colours, the choice of which follows market trends. If you are planning to build a new salon, these pages will give you the ideas to make it sustainable.*



## Innanzitutto parliamo di ecologia

*First of all, let's talk about ecology*

Partendo dalle ceramiche sanificabili, ai legni certificati, alle "ecopelli" dal profumo di agrumi, ai metalli e vetri riciclati e riciclabili, ai tessuti ricavati dagli scarti di plastiche, vi proponiamo una semplice guida per accostare colori e materiali e per realizzare al meglio il vostro salone Eco.

*Starting with sanitised ceramics, certified woods, citrus-scented "eco-leather", recycled and recyclable metals and glass, fabrics made from plastic waste, we offer you a simple guide on how to combine colours and materials and how to best realise your Eco salon.*



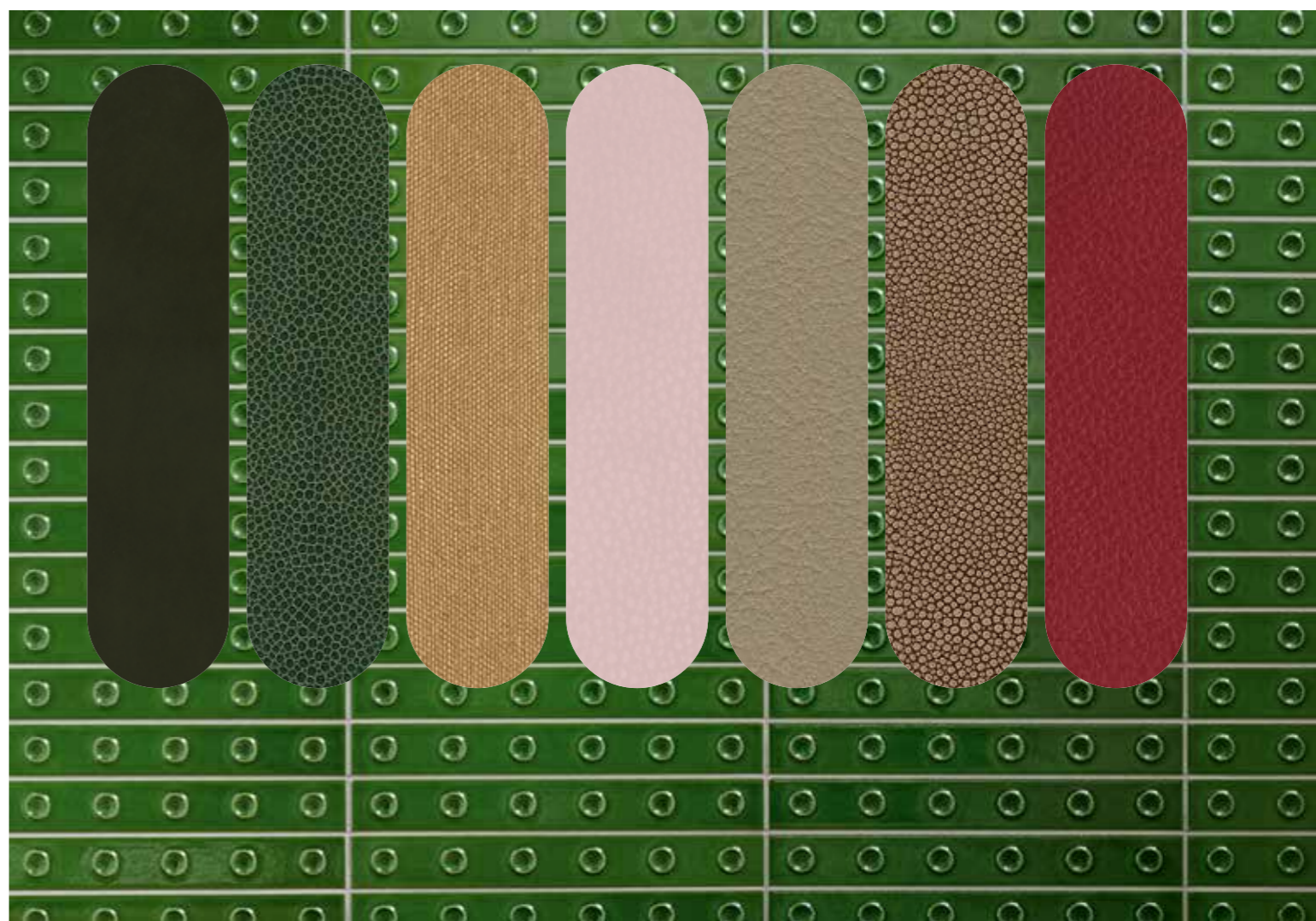
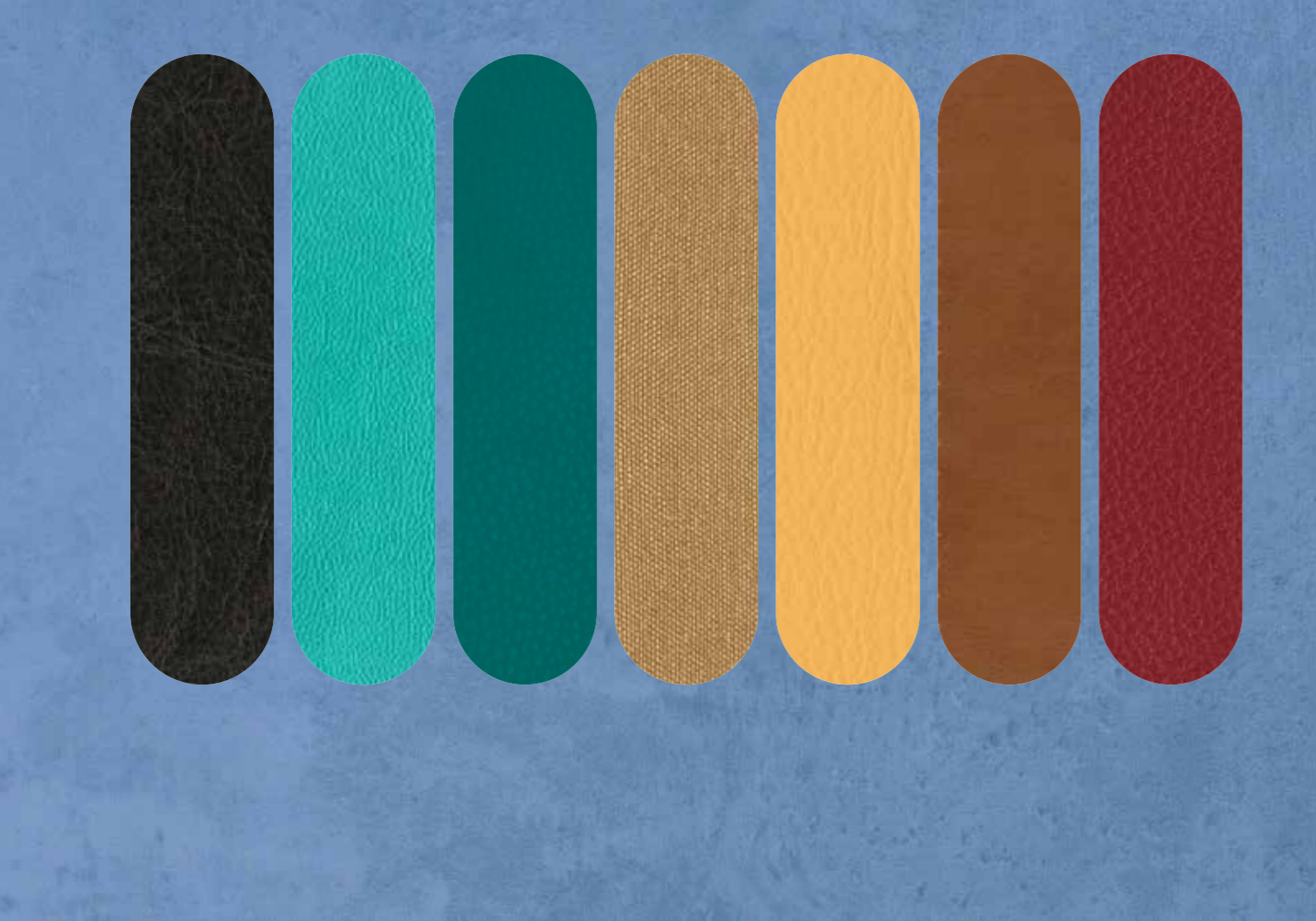
## L'importanza del pavimento nella scelta degli arredi

Il pavimento è spesso un punto di partenza quando ci troviamo ad affrontare l'arredo di un nuovo spazio. In queste pagine abbiamo scelto per voi una serie di pavimenti di tendenza, ma se intendete mantenere quelli già esistenti, questa guida vi aiuterà ad abbinare colori e texture.

### *The importance of the floor when choosing furniture*

*The floor is often a starting point when we are faced with furnishing a new space. In these pages we have chosen a number of trendy floors for you, but if you intend to keep your existing ones, this guide will help you match colours and textures.*





### LIGHT

### COLOUR

### DARK

In esaurimento, verificare la disponibilità.  
Running low, check availability.  
Faible, vérifiez la disponibilité.  
Zur Neige gehen, Verfügbarkeit prüfen.  
Se está agotando, consultar disponibilidad.  
Está acabando, verifique a disponibilidade.



**IT** - I nuovi campioni di skay sono stati organizzati in modo da facilitarne la consultazione e la scelta. In una prima fase gli skay vengono suddivisi per colore / tonalità: LIGHT, sono gli skay dai toni neutri, bianco, beige, grigio chiaro, COLOUR, sono gli skay colorati, DARK, sono gli skay scuri, marrone, blu e altre tonalità. A fianco di ognuno trovate il numero, il nome e la finitura: CLASSIC, colori uniformi, FABRIC, effetto tessuto, TEXTURE, colori non uniformi / effetti tridimensionali sulla superficie.  
Tutti i colori e tipologie degli skay sono testati dall'ufficio tecnico Maletti che ne certifica gli elevati standard prestazionali e la resistenza all'usura e agli agenti chimici.

**EN** - The new upholstery colour swatches have been organized to facilitate their consultation and choice. At first glance the colours are divided according to shades: LIGHT, neutral tones, white, beige, light grey, COLOUR, coloured upholstery, DARK, dark tones, brown, blue and other dark shades.

As a next step we find the indication of number, name and finish: CLASSIC, uniform colours, FABRIC, fabric effect, TEXTURE, non uniform colours / three-dimensional effects on surface. All upholstery colors area tested by Maletti's technical department which certifies their high performance standards and resistance to wear and chemicals.

**FR** - Les nouveaux échantillons de skay ont été organisés afin de faciliter la consultation et le choix. Dans une première phase, les skays sont divisés par couleur / teinte: LIGHT, ce sont les skay dans des tons neutres, blanc, beige, gris clair, COLOUR, sont les skays colorés, DARK, sont les nuances foncées, brunes, bleues et autres skay. A côté de chacun, vous trouverez le numéro, le nom et la finition:

**CLASSIC**; colori uniformi, FABRIC, effet tissu, TEXTURE, couleurs inégales / effets tridimensionnels sur la surface.  
Toutes les couleurs et tous les types de skays sont testés par le bureau Technicien Maletti qui certifie leurs normes élevées performances et résistance à l'usure et aux agents chimiques.

**DE** - In neuer Skai-Farbkarte haben wir die Reihenfolge der Proben organisiert, um deren Beratung und Auswahl zu erleichtern. Die erste Auswahl erfolgt mit der allmählichen Farbgebung: LIGHT, Skay in neutralen Tönen, Weiß, Beige, Hellgrau, COLOUR, farbiger Skai, DARK, Skai in dunklen, braunen, blauen und anderen Farbtönen.  
Neben der Nummer, dem Namen und dem Finish: CLASSIC, einheitliche Farbe, FABRIC, Stoff Effekt, TEXTURE, ungleichmäßige Farbe oder Oberfläche mit dreidimensionalen Effekten.  
Alle Maletti-Skai werden von der technischen Abteilung der Firma getestet, die ihre hohen Leistungsstandards und ihre Beständigkeit gegen Verschleiß und Chemikalien zertifiziert.

**ES** - Las nuevas muestras de color de tapizado se han organizado para facilitar su consulta y elección. A primera vista los colores se dividen según tonalidades: LIGHT, tonalidades neutras, blanco, beige, gris claro, COLOUR, tapizado de color, DARK, tonalidades oscuras, marrones, azules y otros.  
Como paso siguiente encontramos la indicación de número, nombre y acabado: CLASSIC, colores uniformes, FABRIC, efecto tejido, TEXTURE, colores no uniformes / efectos tridimensionales en la superficie.  
Todos los colores de tapicería han sido testados por el departamento técnico de Maletti que certifica sus altos estándares de rendimiento, resistencia al desgaste y a los productos químicos.

**PT** - Na nova nova tabela Courvim (coberturas) organizamos a ordem das amostras de forma a facilitar a sua pesquisa e escolha. A primeira leitura ocorre com a gradação das cores: LIGHT, Corvim em tons neutros, bege, cinza claro, COLOUR, Couvim colorido, DARK, Courvim escuro, marrom, azul e outros tons.  
Ao lado estão o número, o nome e o acabamento: CLÁSSICO, cores uniformes, TECIDO, efeito tecido, TEXTURA, cores irregulares / efeitos tridimensionais na superfície.  
Todas as cores e tipos de skays são testados pelo departamento técnico da Maletti que certifica seus altos padrões de desempenho e resistência ao desgaste e agentes químicos.

**IT** - PER LE ZONE LAVAGGIO E LE ZONE TECNICHE, MALETTI SUGGERISCE L'UTILIZZO DI SKAY SCURI. L'AZIENDA NON GARANTISCE LA RESISTENZA DELLO SKAY ALLE MACCHIE DI TINTURA.  
CONSIGLI: lavare con spugna non abrasiva imbevuta di acqua e sapone neutro. Rimuovere le macchie di lacca con acqua e sapone o utilizzare in alternativa l'apposito detergente Top Skin.  
ATTENZIONE: non utilizzare mai alcool, benzene, candeggina, solventi, detergenti chimici o spray lucidanti. Rimuovere immediatamente le macchie di tintura! Maggiore è il tempo che la tintura rimane sullo skay e minori sono le possibilità di pulire a fondo lo skay stesso: la tintura lo aggredisce per tutto il tempo che resta sulla sua superficie. Non fare accomodare clienti che indossano tessuti denim scuri (jeans) su poltrone e lavatete rivestiti in skay chiaro. In alternativa fare indossare ai clienti un camice. Non è possibile eliminare le macchie di denim senza danneggiare lo skay.

**EN** - FOR WASHING AND TECHNICAL AREAS, MALETTI SUGGESTS THE USE OF DARK ECO-LEATHERS. THE COMPANY DOES NOT GUARANTEE THE RESISTANCE OF ITS ECO-LEATHERS TO DYE STAINS RECOMMENDATIONS: clean with non abrasive sponge soaked with water and neutral soap. Remove the lacquer stains with water and neutral soap, or alternatively use the specific detergent Top Skin. ATTENTION: never use alcohol, benzene, bleach, solvents, chemical detergent or polishing spray. Immediately remove dye stains! The greater is the time the dye remains on the skay, the lesser are the chances of thoroughly cleaning the same skay: the dye will attack it for as long as it is left on its surface. Please, do not let sit down wearing denim (jeans) material customers on chairs or washing units which are covered by clear skay. We suggest as option to let wear to customers a cape. The spots of denim can not be removed without damaging the skay.

**FR** - POUR LES ESPACES LAVAGE ET TECHNIQUES, MALETTI SUGGERE L'UTILISATION DE SKAI FONCÉS. LE SOCIÉTÉ NE GARANTIT PAS LA RESISTANCE DU SKAI AUX TACHES DE TEINTURE.  
CONSEILS: lavez avec une éponge non abrasive imbibée d'eau et de savon neutre. Enlevez les taches de laque avec de l'eau et du savon ou utilisez le détergent spécial Top Skin.  
ATTENTION: évitez l'alcool, le benzène, l'eau de Javel, les solvants, les détergents chimiques et les sprays brillantants. Enlevez immédiatement les taches de teinture! Plus vous attendez, moins vous aurez de chances de le nettoyer le skai à fond car la teinture continue de l'attaquer tant qu'elle reste dessus. Pas laisser s'asseoir les clients qui endossent tissu en denim (jeans), sur fauteuils et bacs de lavage recouverts en skay clair. Nous vous conseillons comme option de faire endosser aux

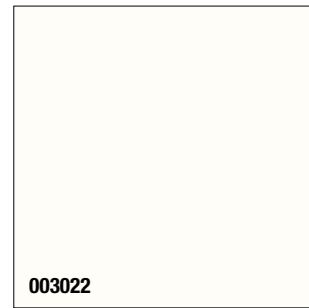
clients une blouse. Les taches de denim ne peuvent pas être enlevées sans damager le skay.

**DE** - FÜR DEN WASCH- UND ARBEITSBEREICH EMPFIEHLT MALETTI DUNKLE FARBSTELLUNGEN. DAS UNTERNEHMEN HAFTET NICHT FÜR FLECKEN AUF DEM KUNSTLEDER, DIE DURCH FARBUNGEN UND TÖNUNGEN VERURSACHT WERDEN.  
EMPFEHLUNGEN: Mit weichem Schwamm, Wasser und milder Seife reinigen. Haarsprayflecken mit Wasser und Seife oder alternativ dem Spezialreiniger Top Skin entfernen.  
ACHTUNG: Verwenden Sie niemals Alkohol, Benzol, Chlor, Lösungsmittel, chemische Reiniger oder Glanzsprays Entfernen Sie Flecken von Tönungen sofort! Je länger das Haarfarbeprodukt auf dem Kunstleder bleibt, desto geringer die Chancen zur kompletten Entfernung. Solange das Tönungsmittel auf dem Kunstleder ist, dringt es dort ein. Auf Sesseln und Waschanlage mit hellen Skaibezügen, bitte lassen Sie nicht sitzen Kunden, die Kleidungen aus Denim (Jeans) anziehen. Als Alternativ könnten die Kunden von Ihnen einen weissen Kittel zum Anziehen bekommen. Es ist nicht möglich Flecken von Denim wegnehmen, ohne denSkai bezug zu beschädigen.

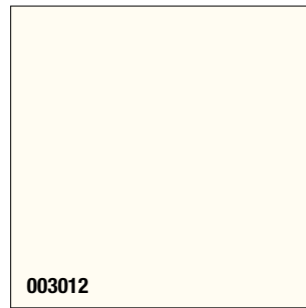
**ES** - PARA LAS ZONAS DE LAVADO Y LAS ÁREAS TÉCNICAS, MALETTI SUGIERE EL EMPLEO DE CUEROS ECOLÓGICOS OSCUROS. LA EMPRESA NO GARANTIZA LA RESISTENCIA DEL MATERIAL A LAS MANCHAS DE TINTES.  
RECOMENDACIONES: Lave con una esponja no abrasiva embebida en agua y jabón neutro. Quite las manchas de laca con agua y jabón o

utilice como alternativa, el expreso detergente top skin.  
**ATENCIÓN:** no utilice nunca alcohol, benceno, lejía, solventes, detergentes químicos o spray brillante. Quite inmediatamente las manchas de tinta! Cuanto mayor es el tiempo que la tintura queda en la simil piel, menor es la posibilidad de limpiarla a fondo: la tintura la agrede durante todo el tiempo que queda en la superficie. Es importante que no se sienten clientes que llevan tejidos denim (jeans) oscuros sobre sillones y lavacabezas revestidos en skay claro. En alternativa poner al cliente una bata. No es posible eliminar las manchas de denim sin dañar el skay.

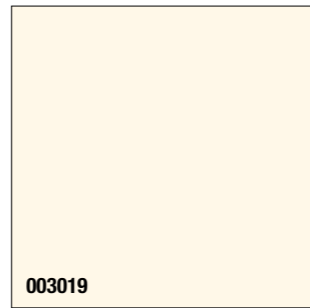
**PT** - PARA AS ÁREAS DE LAVAGEM E ÁREAS TÉCNICAS A MALETTI SUGERE O USO DE UM COURVIN ESCURO. A EMPRESA NÃO GABANTE A DURABILIDADE DO COURVIN SE MANCHADOS POR COLORAÇÃO DÍCAS: Lavar com uma esponja não abrasiva embebida em água e sabão neutro. Remover as manchas de laquê com sabão e água ou utilize como alternativa um produto apropriado para limpar couro e courvin.  
**ATENÇÃO:** nunca utilize álcool, benzina, água sanitária, solventes, produtos químicos de limpeza, ou spray para limpeza. Remova imediatamente a mancha de tinta! maior e o tempo que permanece no courvin e menores são a possibilidade de limpa-lo profundamente. A tinta agreda a superfície do courvin durante todo o tempo que permanece nela. Não acomodar a clientes que usam roupas escuras(jeans) nas poltronas e lavatórios com courvin de cores claras, uma alternativa pode ser pedira para a clientes colocar um roupão. Não é possível eliminar manchas de jeans sem danificar o courvin.



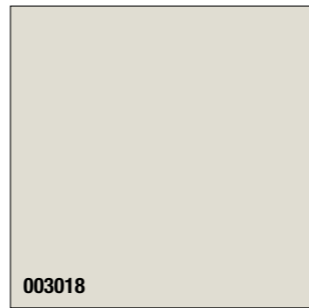
003022  
BIANCO OPACO - MATT WHITE - BLANC OPAQUE MATT WEISS - BLANCO MATE  
\* EASY M | ECLIPSE | MINIMAL | OVAL RECEPTION M3



003012  
BIANCO LUCIDO - GLOSSY WHITE - BLANC BRILLANT GLAENZEND WEISS - BLANCO BRILLANTE  
\* EASY M | ECLIPSE | MINIMAL | OVAL RECEPTION M3



003019  
AVORIO OPACO - MATT IVORY - IVOIRE OPAQUE MATT ELFENBEIN - MARFIL MATE  
\* EASY M | ECLIPSE | MINIMAL | OVAL RECEPTION M3



003018  
GRIGIO CHIARO - LIGHT GREY - GRIS OPAQUE HELLGRAU - GRIS CLARO  
\* EASY M | ECLIPSE | MINIMAL | OVAL RECEPTION M3



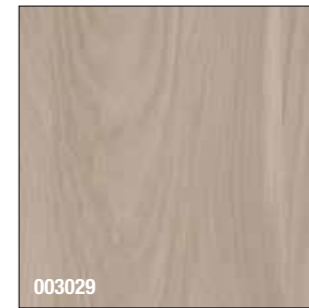
003023  
NERO OPACO - MATT BLACK - NOIR OPAQUE - MATT SCHWARZ - NEGRO MATE  
\* EASY M | ECLIPSE | MINIMAL | OVAL RECEPTION M3



003013  
NERO LUCIDO - GLOSSY BLACK - NOIR BRILLANT GLAENZEND SCHWARZ - NEGRO BRILLANTE  
\* EASY M | ECLIPSE | MINIMAL | OVAL RECEPTION M3



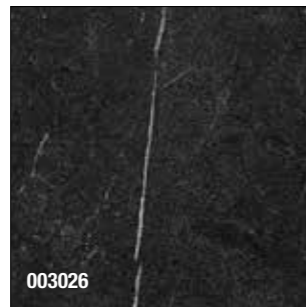
003024  
CEMENTINO BIANCO - WHITE CEMENTINO - CIMENT BLANC - WEISSER ZEMENTINO - CEMENTERO BLANCO  
\* EASY M | ECLIPSE | MINIMAL | OVAL RECEPTION M3



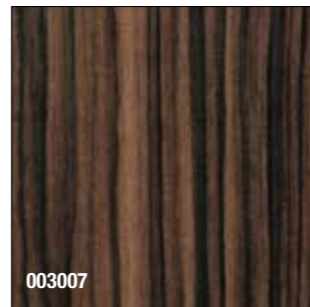
003029  
CHAMPAGNE  
\* EASY M | ECLIPSE | MINIMAL | OVAL RECEPTION M3



003028  
WHITE TALC  
\* EASY M | ECLIPSE | MINIMAL | OVAL RECEPTION M3



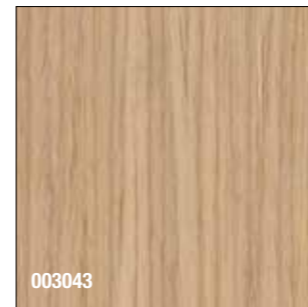
003026  
BLACK TALC  
\* EASY M | ECLIPSE | MINIMAL | OVAL RECEPTION M3



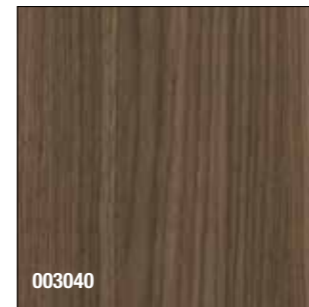
003007  
PALISSANDRO OPACO - MATT ROSEWOOD - PALISSANDRE OPAQUE - MATTES ROSENHOLZ - PALO DE ROSA MATE  
\* EASY M | ECLIPSE | MINIMAL | OVAL RECEPTION M3



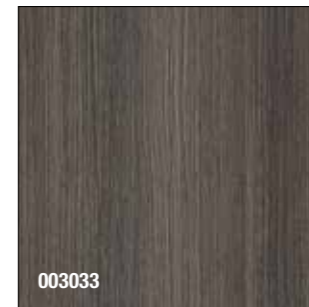
003031  
ROVERE SCURO - DARK OAK - CHÊNE FONCÉ - EICHE DUNKEL - ROBLE OSCURO  
\* EASY M | ECLIPSE | MINIMAL | OVAL ECO ATELIER | RECEPTION M3  
\*\*\* HEAVEN | BASE CEP | BARRIQUE



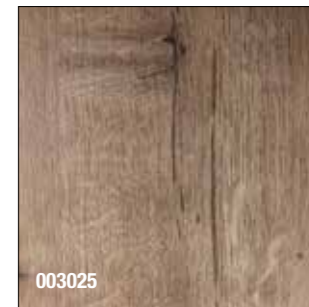
003043  
ROVERE CHIARO - LIGHT OAK - CHÊNE CLAIR - EICHE HELL - ROBLE CLARO  
\* EASY M | ECLIPSE | MINIMAL | OVAL ECO ATELIER | RECEPTION M3  
\*\*\* HEAVEN | STARCLASS | GREEN HUG ALOE | BASE CEP | HUB | BARRIQUE  
DIVINA ARMCHAIR  
\*\*\*\* BASE CEP | BARRIQUE



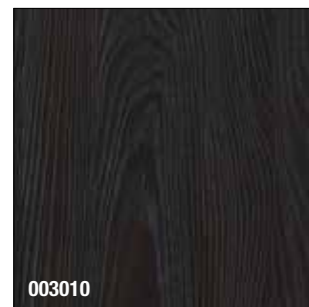
003040  
NOCE - WALNUT - NOIX - WALNUS - NOGAL  
\* EASY M | ECLIPSE | MINIMAL | OVAL ECO ATELIER | RECEPTION M3  
\*\* STARCLASS | GREEN HUG  
\*\*\* HUB | DIVINA ARMCHAIR



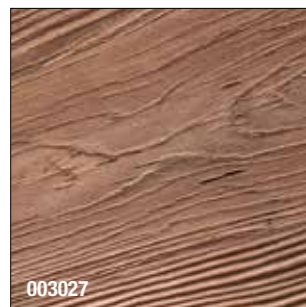
003033  
SABLÉ GRIGIO TORTORA - SABLÉ DOVE - GRE - SABLÉ GRIS TAUPE - SABLÉ TAUBENGRÄU - SABLÉ TAUPE  
\* EASY M | ECLIPSE | MINIMAL | OVAL RECEPTION M3  
\*\* STARCLASS | GREEN HUG



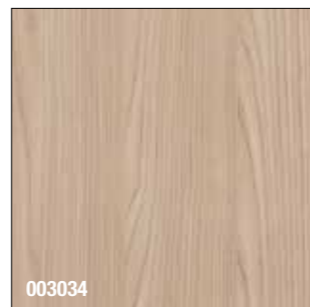
003025  
ROVERE 18 - OAK 18 - CHÊNE 18 - EICHE 18 - ROBLE 18  
\* EASY M | ECLIPSE | MINIMAL | OVAL RECEPTION M3



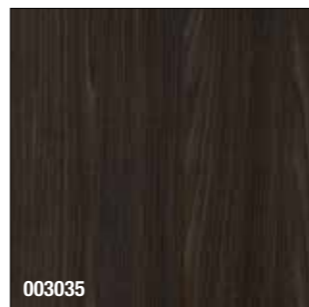
003010  
EBANO - EBONY - ÉBÈNE - EBENHOLZ  
\* EASY M | ECLIPSE | MINIMAL | OVAL RECEPTION M3 | BARBER



003027  
ENGADINA  
\* EASY M | ECLIPSE | MINIMAL | OVAL RECEPTION M3 | BARBER



003034  
FRONDA LIGHT  
\* EASY M | ECLIPSE | MINIMAL | OVAL RECEPTION M3 | ECO ATELIER  
\*\* GREEN HUG ECO | STARCLASS ECO



003035  
FRONDA DARK  
\* EASY M | ECLIPSE | MINIMAL | OVAL RECEPTION M3 | ECO ATELIER  
\*\* GREEN HUG ECO | STARCLASS ECO  
GREEN HUG | STARCLASS



Tutte le immagini sono inserite a scopo illustrativo.  
All images are inserted for illustrative purposes.  
Toutes les images sont insérées à des fins d'illustration.  
Alle Bilder sind zur Veranschaulichung eingefügt.  
Todas las imágenes se insertan con fines ilustrativos.

\* Nobilitato | Melamine | Mélaminé | Melamin | Melamina sp.18 mm  
\*\* Laminato | Laminato | Stratifié | Laminat | Laminado  
\*\*\* Impiallaccio verniciato | Varnished veneer  
Placage verni | Lackiertes Furnier | Chapa barnizada  
\*\*\*\* PVC

#### IT - MANUTENZIONE SUPERFICI IN NOBILITATO E IN LAMINATO

Per la pulizia di questo tipo di superficie utilizzare una soluzione di detersivo liquido neutro non abrasivo diluito in acqua, oppure concentrato nel caso in cui si abbiano superfici molto sporche e grasse, applicandolo su tutta la superficie con spugna morbida. Risciacquare e asciugare immediatamente con un panno morbido e pulito evitando anche qui l'uso di pagliette metalliche, detersivi acidi, solventi come trielina, acetone, alcool e qualunque sostanza abrasiva o acida che possa intaccare l'integrità della superficie, in particolare attenzione ad anticalcare o pulitori per piastre spartifiamma. Rimuovere subito le macchie di colore o sostanze aggressive.

#### EN - MAINTENANCE AND CLEANING OF WATERPROOF LAMINATE AND WOOD

Wash with a non-abrasive sponge soaked with water and neutral soap.

Dry with a soft and clean cloth. Never use chemical solvents or aggressive detergents like acetone, alcohol. In particular do not use anti-limestone products or other aggressive cleaners. Remove hair dyes and other hair products immediately. Clean any stains within a few seconds.

#### FR - NETTOYAGE ET ENTRETIEN DES SURFACES EN MELAMINE ET STRATIFIE

Pour nettoyer ce type de surface, il faut utiliser une solution de détergent liquide neutre non abrasif, diluée dans de l'eau, ou concentrée dans le cas de surfaces très sales et grasses, et l'appliquer avec une éponge mou. Rincer et sécher immédiatement après avec un chiffon mou et propre, en évitant également l'utilisation de brosses métalliques, de détergents acides, de solvants tels que le trichloréthylène, l'acétone, l'alcool et toute substance abrasive ou acide qui peuvent

affecter l'intégrité de la surface. Faire attention surtout aux produits anti-calcaire et aussi aux substances pour nettoyer les lisseurs de cheveux. Enlever tout de suite les taches de couleurs et les substances agressives.

#### DE - PFLEGE VON HOLZFLÄCHEN UND SCHICHTHOLZ

Neutralseife getränkter Schwamm abwischen. Niemals chemische Lösungsmittel oder aggressive. Reinigungsmittel verwenden. Trocknen mit einem weichen und sauberen Tuch. Niemals chemische Lösungsmittel oder aggressive. Reinigungsmittel (w.z.B. Bleichmittel, Meerbarbe, Aceton, Alkohol). verwenden. Insbesondere keine Anti-Kalk Mittel und Die Reinigung mit. Bohnerwachs ist nicht empfohlen auf matte Oberfläche. Sofort alle Flecken von Haarfärbemitteln oder anderen Haarprodukten entfernen. Die Reinigung muss in den ersten Sekunden nach der Fleckenbildung erfolgen.

#### ES - MANUTENCIÓN SUPERFICIES DE MADERA MELAMINICA Y LAMINADO

Para limpiar este tipo de superficie, use una solución de detergente líquido neutro no abrasivo diluido en agua o concentrado en el caso de que haya superficies muy sucias y grasosas, aplicándolas sobre toda la superficie con una esponja suave. Enjuague y seque inmediatamente con un paño suave y limpio, evitando también el uso de estropajos metálicos, detergentes ácidos, solventes como trielina, acetona, alcohol y cualquier sustancia abrasiva o ácida que pueda afectar la integridad de la superficie, en particular atención a productos antical o limpiador para placas de distribución de llamas. Eliminar las manchas o sustancias agresivas de inmediato.



# Index

## COLLECTIONS

Shirobody	8
Barrique	10
Heaven	12
Rue Montenapoleone	14
Eco Green First	20
Minimal	22
Old Smoke	24
Eco Fun	28
Maison Sarah Lavoine	30

## PRODUCTS

lavatesta   <i>wash units</i>	44
poltrone   <i>styling chairs</i>	54
sgabelli   <i>trolleys</i>	60
basi   <i>bases</i>	61
poltrone uomo   <i>barber chairs</i>	62
mensole   <i>styling units</i>	68
complementi di arredo   <i>complementary furniture</i>	90

## COLOR TREND 102



STOOLS



Sgabi / Siena Color 60  
After Tomorrow 60  
You 60  
Sarah Tabouret 60  
Madre Stool 60  
Aloe Short 60

STYLING UNITS



Rue M. Sole Wall 70  
Rue M. Fiore Wall 70  
Rue M. Sole Wall 2P 71  
Rue M. Fiore Wall 2P 71  
Rue M. Sole Centrale 2P 72  
Rue M. Fiore Centrale 2P 73  
Rue M. Sole Centrale 4P 72



Rue M. Fiore Centrale 4P 73  
Noa Coiffeuse 74  
Sarah Miroir 74  
Sarah Miroir 74  
Sarah Table Easy Centrale 4P 75  
Sarah Table Easy Centrale 2P 75  
Sarah Table Plus Centrale 4P 76  
Sarah Table Plus Centrale 2P 76



Venezia Wall 77  
Venezia 77  
Grimhilde Slim 78  
Grimhilde Plus 78  
Grimhilde Plus with footrest 78  
Eclipse Wall 79  
Eclipse 79  
Eclipse with footrest 79  
Eco Atelier 80  
Oval 80



Minimal Basin Oblo 83  
Console Minimal Single 82  
Console Minimal Oblo 83  
Console Minimal 4p 82  
Minimal Box 83  
Minimal Ovale Centrale 2p 84-85  
Minimal Ovale Centrale 4p 86-87  
Marcello Wall Single 88  
Accademia 88

FOOTRESTS



TT 89  
TT 89  
TT 89  
Madame 89  
Foot Dream 89  
Drop 89  
Noa Repose Pieds 89  
Sarah Repose Pieds 89

TECHNICAL TABLES



Colline 4P 89

MIRRORS



Marcello 89  
Minimal Mirror 89

RECEPTIONS



Rue M. Reception 92  
Rue M. Reception 92  
Overture Easy 92  
Eco Green 92

TROLLEYS



Rue M. Trolley 98  
Rue M. Box 98  
Sarah Trolley 98  
Sarah Tiroir 98  
Urban 98  
Manhattan 99  
Great 99  
Just Color 99  
Minimal Trolley 99

ELECTRICS



Casco Wall 100  
Hair Station Wall 100  
Hair Master Wall 100  
Casco 100  
Hair Station 100  
Hair Master 100

DISPLAY UNITS



Sarah Expo 5P 93  
Expo 5 93  
Expo 3 | Expo 2 93

BARBER STATION



Barber Station 96

BACK-WASH CABINETS



Easy M. Complete 94-95  
Café Momus Complete 94

MANICURE



Spring 101  
Narciso 101  
Aksa Beach 101  
Smart Nails 101

**MALETTI GROUP  
É PRESENTE IN 108 PAESI NEL MONDO**

***MALETTI GROUP IS DISTRIBUTED  
IN 108 COUNTRIES AROUND THE WORLD***

**MALETTI È PRESENTE ATTRAVERSO I SUOI DISTRIBUTORI  
IN TUTTO IL MONDO.**

Per trovare il distributore Maletti più vicino a te, visita il sito [www.malettigroup.com](http://www.malettigroup.com) alla sezione distributori, seleziona lo stato in cui desideri trovare gli arredi per saloni da parrucchiere Maletti e visualizza l'elenco dei distributori suddiviso per zona geografica.

***MALETTI IS AVAILABLE WORLDWIDE THROUGH A LARGE CHAIN  
OF DISTRIBUTORS.***

*To find the nearest Maletti distributor, visit [www.malettigroup.com](http://www.malettigroup.com) at the distributors section, select the country from which you wish to purchase Maletti hair salon furniture and view the list of distributors for your geographic area.*





MALETTI GROUP

Piazzale Guerrino Maletti, 1  
42019 Scandiano (RE) - Italy  
tel +39 0522 7631  
info@malettigroup.com  
www.malettigroup.com



**Maletti España**  
info@maletti.es



**Maletti Deutschland**  
info@maletti.de

