



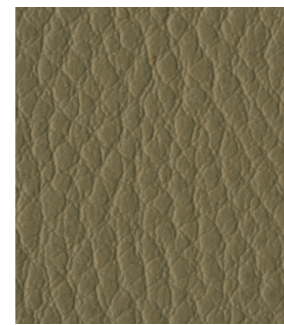
727 SB



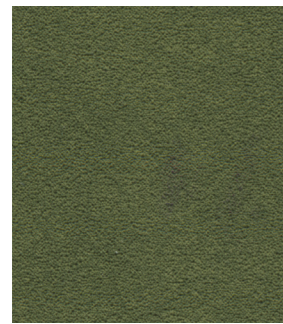
879



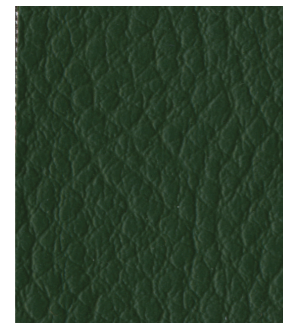
918



919



1486



565



897



873C



850



920



921



922



923



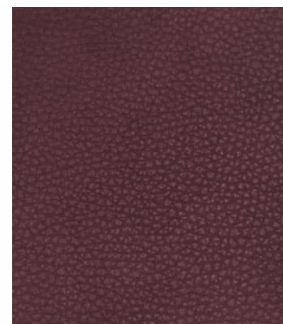
924



925



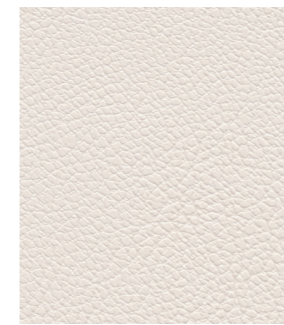
926



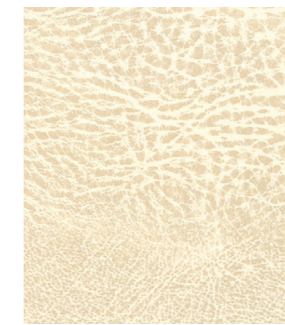
555



540



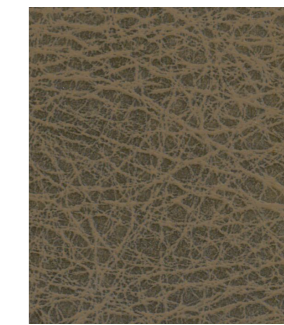
001



456



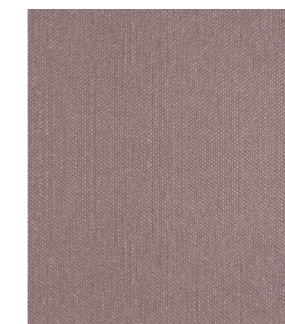
454



455



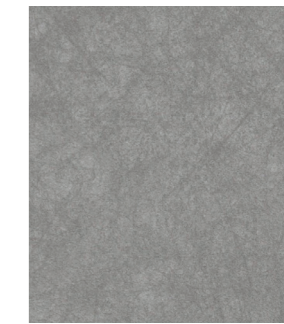
584



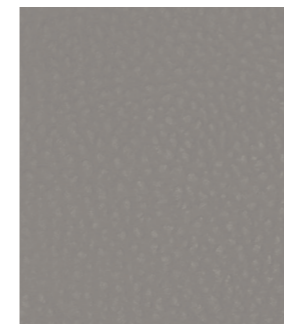
541



542



1483



572 SB



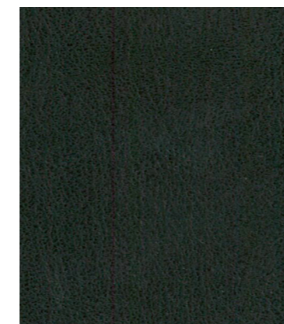
492



562 b



008



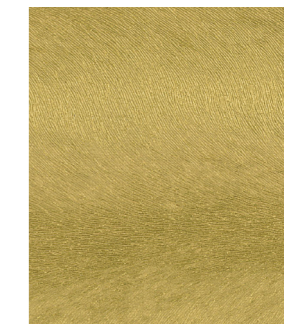
493



566



828



936

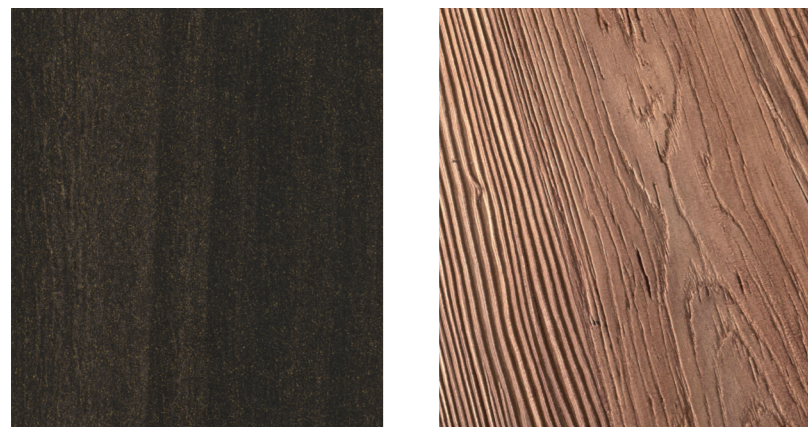
Disponibile per finiture  
Available for finishes  
Disponibile pour les finitions



Gamma colori skay standard - range colors standard skay - gamme de couleurs skay standard

Altri colori su richiesta - More colors on request - Autres couleurs sur demande

**legni solo per barber**  
*wood only for barber*  
**bois uniquement pour les barbiers**



Ebano Sequoia  
*Ebony Sequoia*  
*Séquoia Ébène*

Engadina  
*Engadine*  
*Engadine*

**legni solo per NY**  
*wood only for NY*  
**bois seulement pour NY**



Legno NY  
*Wood NY*  
*Bois NY*

Manutenzioine SKAY - SKAY Maintenance - Entretien SKAY

**\* ITA**

PER LE ZONE LAVAGGIO E LE ZONE TECNICHE.  
BEAUTYSTAR SUGGERISCE L'UTILIZZO DI SKAY SCURI. L'AZIENDA NON GARANTISCE LA RESISTENZA DELLO SKAY ALLE MACCHIE DI TINTURA  
CONSIGLI: lavare con spugna non abrasiva imbevuta di acqua e sapone neutro.  
Rimuovere le macchie di lacca con acqua e sapone o utilizzare in alternativa l'apposito detergente Softsept N®.  
ATTENZIONE: non utilizzare mai alcool, benzene, candeggina, solventi, detergenti chimici o spray lucidanti.  
Rimuovere immediatamente le macchie di tintura! Maggiore è il tempo che la tintura rimane sullo skay e minori sono le possibilità di pulire a fondo lo skay stesso: la tintura lo aggredisce per tutto il tempo che resta sulla sua superficie. Non fare accomodare clienti che indossano tessuti denim scuri (jeans) su poltrone e lavatesta rivestiti in skay chiaro. In alternativa fare indossare ai clienti un camice.  
Non è possibile eliminare le macchie di denim senza danneggiare lo skay.

**\* ENG**

COLOURED ECO-LATHERS.  
THE COMPANY DOES NOT GUARANTEE THE RESISTANCE OF ITS ECO-LEATHERS TO COLOUR DYES.  
MAINTENANCE AND CLEANING ADVICE:  
Always clean with a non abrasive sponge soaked in water and neutral soap.  
Remove lacquer stains with water and neutral soap or alternatively use a specific detergent such as Softsept N®  
ATTENTION: never use pure alcohol, benzene, bleach, solvents, chemical detergent or spray polish.  
Always immediately remove dye stains! The longer the dye remains on the eco-leather, the lower the probability of thoroughly cleaning the surface. Colour dye damages the whole time it remains present.  
Where light coloured eco-leather finishes are preferred, customers wearing denim clothes should be invited to wear capes or not come into direct contact with the fabric. Denim stains cannot be removed without damaging the eco-leather itself.

**\* FRA**

POUR LES ESPACES DE LAVAGE ET LES ESPACES TECHNIQUES,  
BEAUTYSTAR CONSEILLE D'UTILISER DES SKAÏ FONCÉS. L'ENTREPRISE NE GARANTIT PAS LA RÉSISTANCE DU SKAÏ AUX TACHES DE TEINTURE.  
CONSEILS: laver à l'aide d'une éponge non abrasive imbibée d'eau et de savon neutre.  
Éliminer les taches de laque à l'eau et au savon, ou utiliser le nettoyeur spécial Softsept N®.  
ATTENTION: ne jamais utiliser d'alcool, benzène, eau de javel, solvants, produits nettoyants chimiques ou brillants en spray.  
Éliminer immédiatement les taches de teinture! Plus la teinture reste sur le skaï, plus il est difficile de le nettoyer: la teinture l'agresse pendant tout le temps qu'elle reste sur la surface.  
Ne pas faire asseoir des clients portant des jeans foncés sur des fauteuils et bacs de lavage revêtus de skaï clair.  
En alternative, demander aux clients de porter une blouse. Il est impossible d'éliminer les taches de jean sans abimer le skaï.

Immagini puramente indicative / Images for illustration purposes only / Images purement indicatives

**Retro wash Light**

Struttura mobile modulare componibile.  
Struttura in nobilitato bianco o nero e ante con finitura a scelta.

*Modular cabinet system with a choice of black/white laminated doors.*

*Structure mobile modulaire modulaire. Structure en mélaminé blanc ou noir et portes avec un choix de finition.*

Colori struttura  
*Structure colors - Couleurs de structure*



Finiture di rivestimento  
*Coating finishes - Finitions de revêtement*



- \* Gamma cleaf su richiesta
- \* *Cleaf range on request*
- \* *Gamme Cleaf sur demande*



black calacatta/calacatta noir rosewood/bois de rose wengé/wengé

